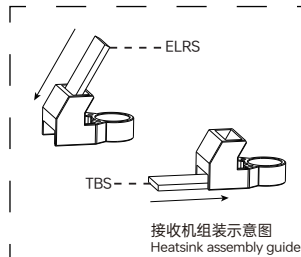
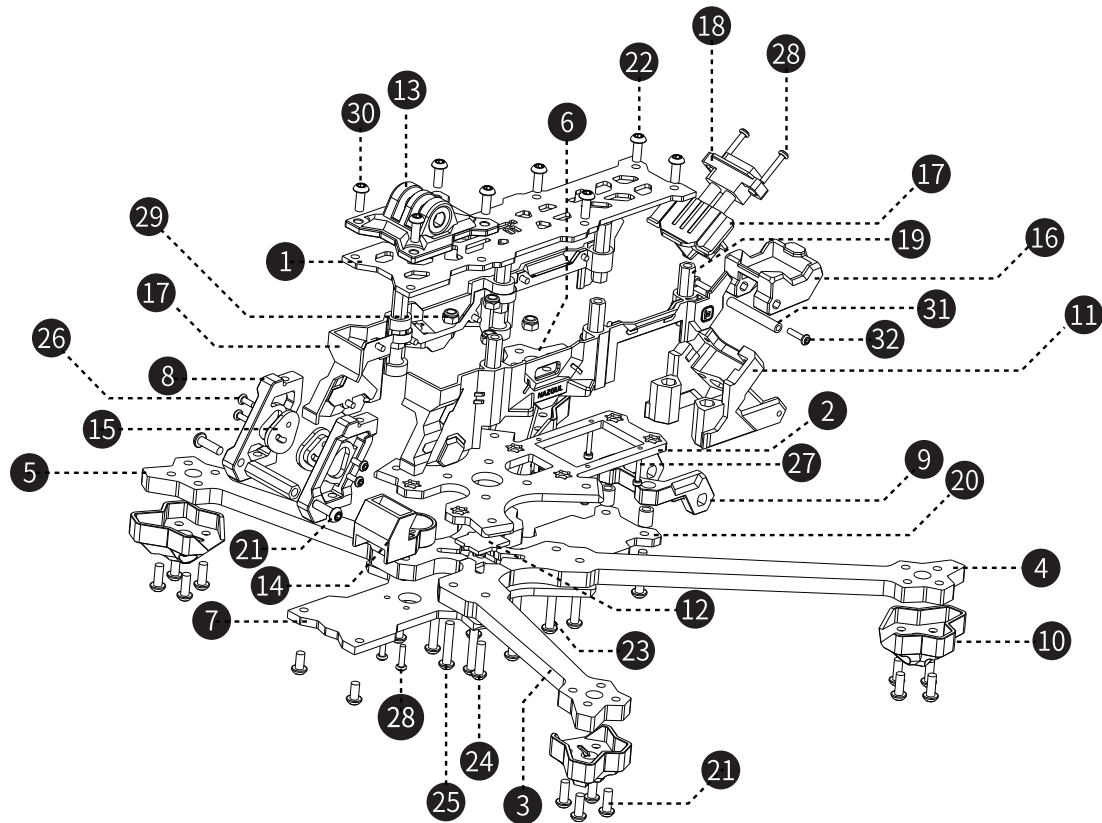


Nazgul Evoque F6D V2

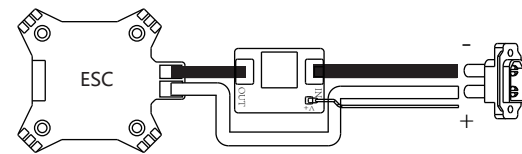
机架组装示意图

Frame Assembly Guide

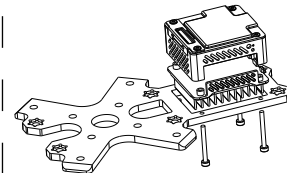
1. 顶板 Top plate	x1	26. M2*5 内六角螺丝 M2*5 hex screw	x6
2. 中板 Counter plate	x1	27. M1.6*10 杯头内六角螺丝 M1.6*10 socket hex screw	x4
3. 机臂A_L ArmA_L	x1	28. M2*10 内六角自攻螺丝 M2*10 self-tapping hex screw	x4
4. 机臂B_L ArmB_L	x1	29. M3 防松自紧螺母 M3 lock nut	x4
5. 机臂A_R ArmA_R	x1	30. M3*8 内六角带垫螺丝 M3*8 wash head hex screw	x6
6. 机臂B_R ArmB_R	x1	31. M2*25 圆形网纹铝柱 M2*25 Al. standoff	x1
7. 底板 Bottom plate	x1	32. M2*8 内六角带垫螺丝 M2*8 wash head hex screw	x2
8. 摄像头侧板CNC CNC camera side plate	x1	(附赠)/(Additional parts)	
9. 915 天线座打印件 915 Antenna TPU	x1	1. M2*6 内六角螺丝 M2*6 hex screw	x2
10. 脚垫打印件 Arm guard TPU	x1	2. 橡胶O型圈 Rubber O-Ring dampers	x8
11. 图传天线座打印件 Antenna TPU	x1	3. 集线管 Motor wire protector	x4
12. LED灯显LOGO 打印件 LED logo TPU	x1	4. LED 中板 PCB-2 Middle plate LED PCB-2	x1
13. 可调节脚座底座打印件 GoPro bottom stand TPU	x1	5. LED+BB响分电板 LED+Buzzer PCB	x1
14. BB响/蜂鸣器打印件 Buzzer holder TPU	x1	6. 三线 端子线 3 Pin cable	x1
15. 摄像头硅胶侧板 Silicone camera side plate	x1	7. 四线 端子线 4 Pin cable	x1
16. GPS座 GPS mount TPU	x1	8. 20*200超纤皮电池扎带 20*200 Battery strap	x1
17. 侧板+LED灯(已安装) Side panels with LED (Assembled)	x1	9. 20*250超纤皮电池扎带 20*250 Battery strap	x1
18. 电源线+插头 Power cable + plug	x1	10. LED导光条 LED light strap	x4
19. M3*23 六角形铝柱 M3*23 hex Al. standoff	x7	11. 格纹硅胶电池防滑垫 Battery pad	x2
20. 3*5*6 双通铝柱 3*5*6 Double-pass Al. standoff	x2	12. M5螺母 M5 nut	x1
21. M3*10 内六角螺丝 M3*10 hex screw	x20	13. 内六角扳手 Allen wrench	x1
22. M3*6 内六角螺丝 M3*6 hex screw	x12	14. M5*20 内六角螺丝 M5*20 hex screw	x1
23. M3*16 内六角螺丝 M3*16 hex screw	x6	15. 通用贴纸V3 Sticker V3	x1
24. M3*12 内六角螺丝 M3*12 hex screw	x4	16. 高清图传散热片 Heatsink for O3 Air Unit	x1
25. M3*30 内六角螺丝 M3*30 hex screw	x4	17. IPEX直头转SMA直头内针转接线 总长6CM IPEX to RP-SMA F Adapter Cable 6CM	x2



接收机组装示意图
Heatsink assembly guide



防火模块接线示意图
Anti-spark filter wiring diagram guide



散热片组装示意图
Receiver assembly guide