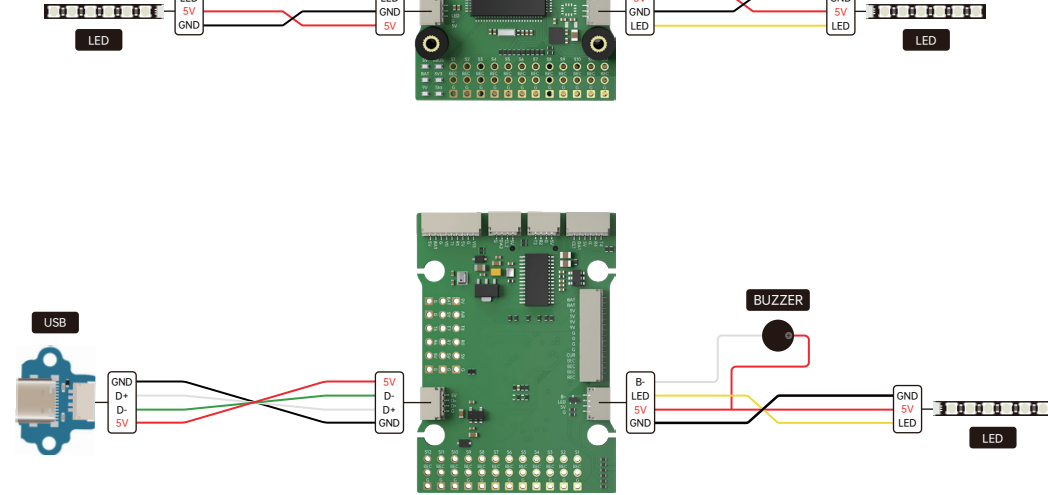
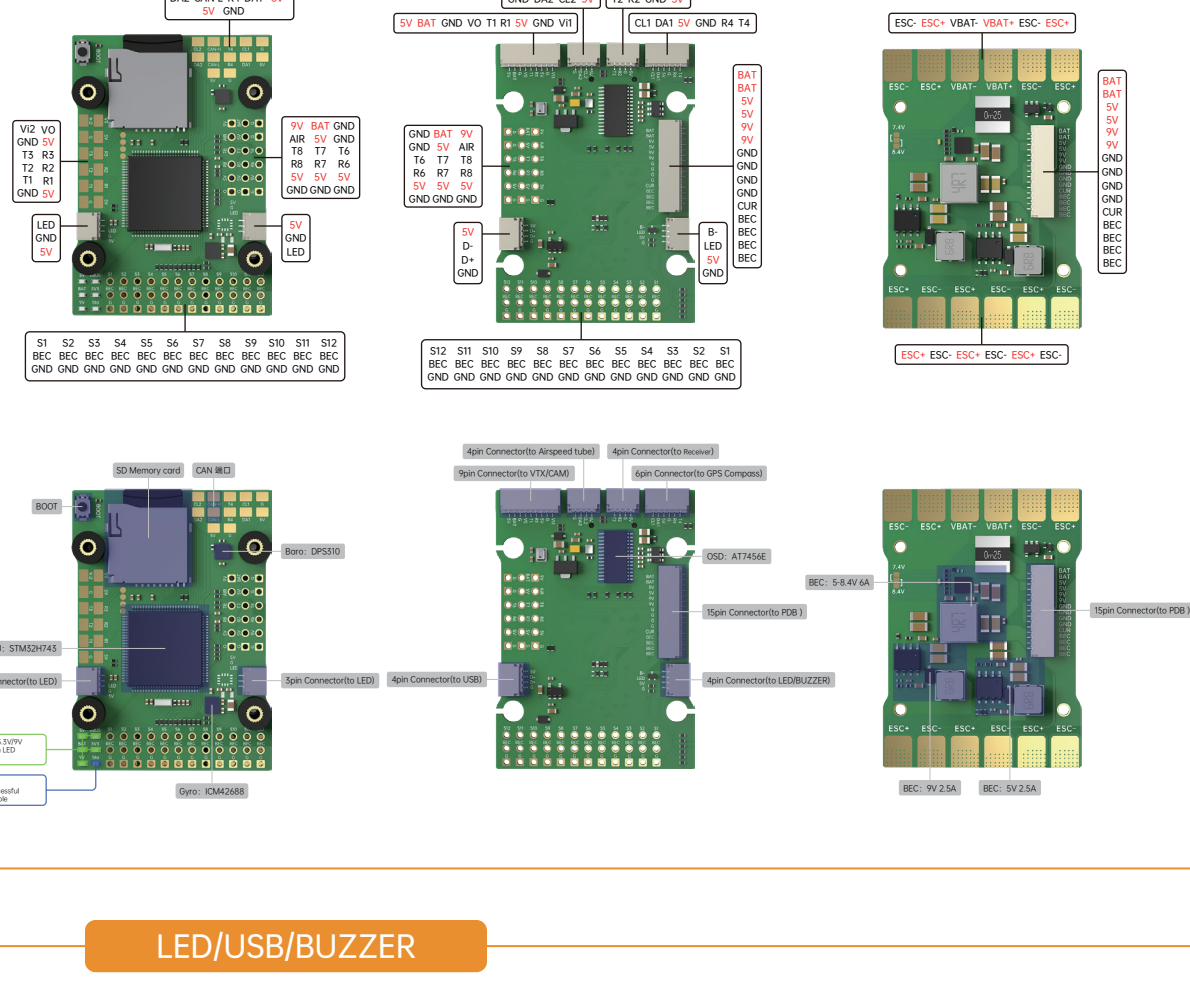
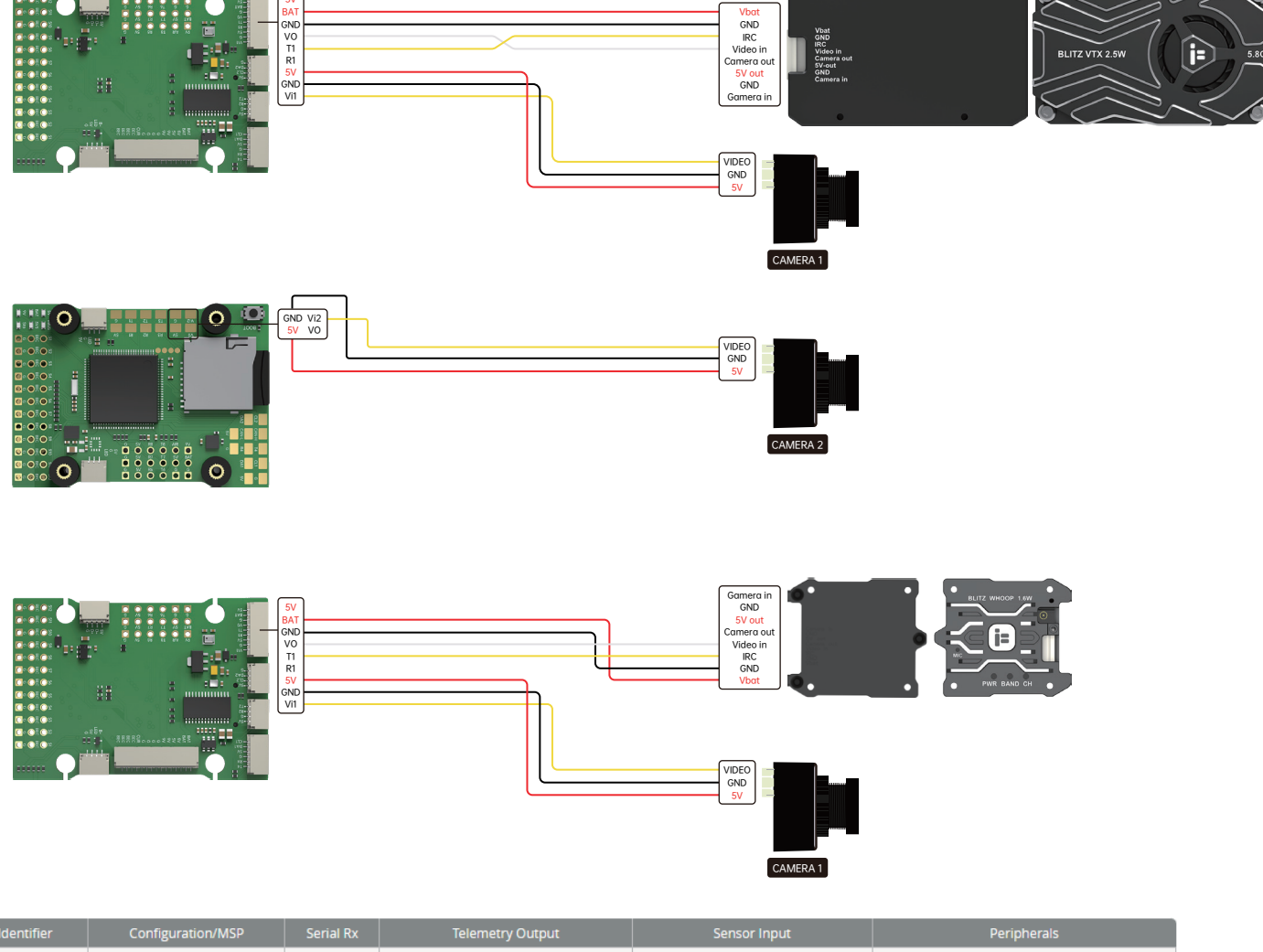


Light BLITZ Wing H743 Instructions

Gyro: ICM42688P
Baro: DPS310

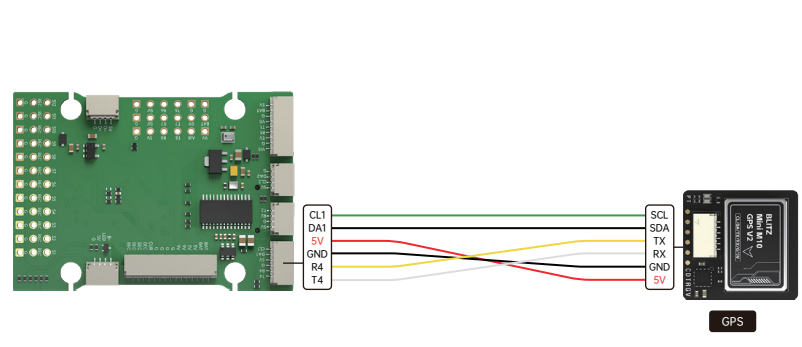


VTY/CAM



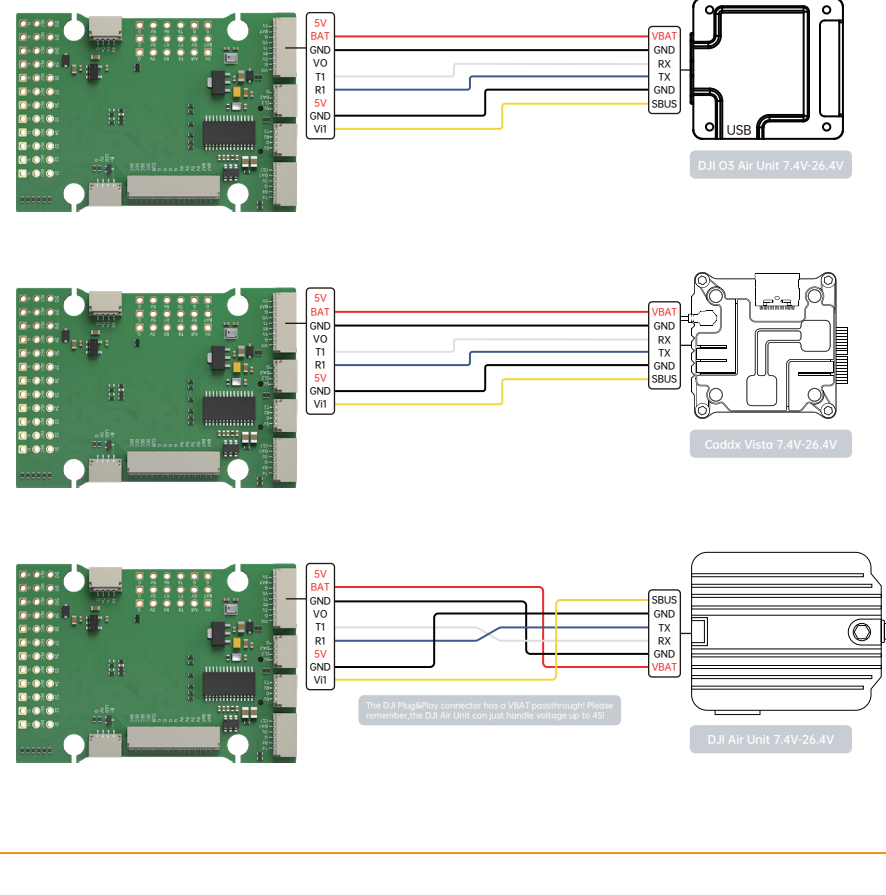
UART2	<input type="checkbox"/> 115200 ▼	<input type="checkbox"/>	Disabled ▼	AUTO ▼	Disabled ▼	AUTO ▼	Blackbox logging VIX (RC ramp) VIX (GPS SmartAudio) ▼
UART3	<input type="checkbox"/> 115200 ▼	<input type="checkbox"/>	Disabled ▼	AUTO ▼	Disabled ▼	AUTO ▼	Camera (RunCam Protocol) Benevexa LIDAR ▼
UART4	<input type="checkbox"/> 115200 ▼	<input type="checkbox"/>	Disabled ▼	AUTO ▼	Disabled ▼	AUTO ▼	OSD (F-RSky Protocol) ▼
UART5	<input type="checkbox"/> 115200 ▼	<input type="checkbox"/>	Disabled ▼	AUTO ▼	Disabled ▼	AUTO ▼	Disabled ▼
UART6	<input type="checkbox"/> 115200 ▼	<input type="checkbox"/>	Disabled ▼	AUTO ▼	Disabled ▼	AUTO ▼	Disabled ▼

Digital Airspeed Sensor



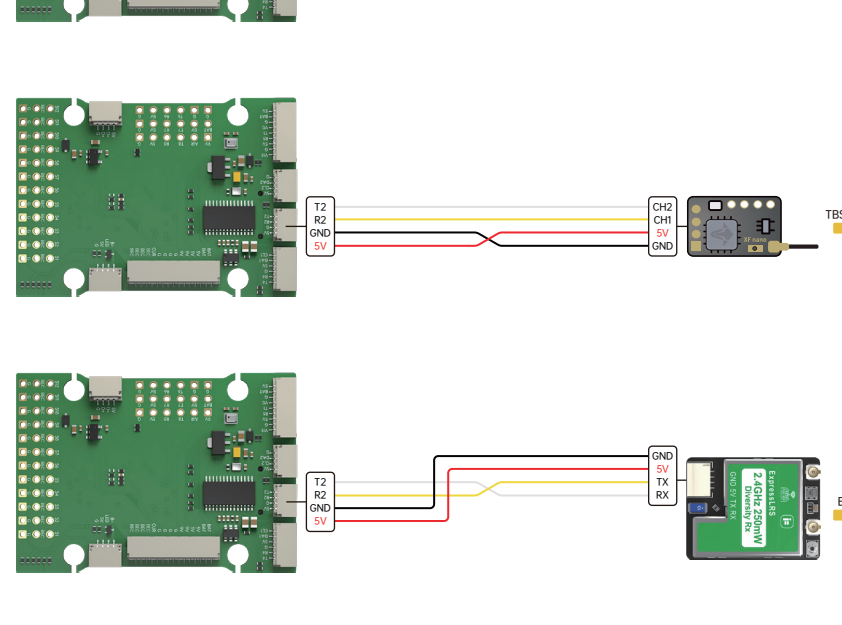
The screenshot shows the 'GPS' configuration screen. At the top, there is a toggle switch for 'GPS' which is turned on. Below this, a yellow note box states: 'Note: Remember to configure a Serial Port (via Ports tab) when using GPS feature.' Under the 'UBLOX' heading, there are four settings, each with a toggle switch: 'Auto Baud' (on), 'Auto Config' (on), 'Utm Galileo' (on), and 'Set Home Point Once' (on).

DJI Digital Transmitters



Processor	Configured as	Serial Pin	Terminal Output	Serial Input	Transceiver
USB KCP	115200		Disabled / AUTO	Disabled / AUTO	Disabled / AUTO
UART1	115200		Disabled / AUTO	Disabled / AUTO	UART1 (USB v. 2)
UART2	115200		Disabled / AUTO	Disabled / AUTO	Renesas USB-to-UART Bridge
UART3	115200		Disabled / AUTO	Disabled / AUTO	Renesas USB-to-UART Bridge
UART4	115200		Disabled / AUTO	Disabled / AUTO	Renesas USB-to-UART Bridge
UART5	115200		Disabled / AUTO	Disabled / AUTO	Renesas USB-to-UART Bridge
UART6	115200		Disabled / AUTO	Disabled / AUTO	Renesas USB-to-UART Bridge

- To enable the air unit OSD under Betaflight 4.4 version, you need to select VTX (MSP+Displayport) in the peripheral port where the air unit signal is connected to the port interface.
- note: DJI FPV Remote Controller2 is for DJI O3 Air Unit
DJI FPV Remote Controller 1 is for DJI Air Unit and Vista
- Please check your protocols, otherwise your DJI Radio won't emit signal!
DJI Google protocol and Betaflight protocol has to match!
For lower signalintensity use the SBUS BAUD,FAST protocol option on both ends.
- For Betaflight Copy Paste "set sbus,baud,fast-on" into your Betaflight Configurator CLI then hit enter.
Use "save" and hit enter to save the changes
Default: sbus,baud,fast-off, Google protocol set to NORMAL



UARTS	<input type="checkbox"/> 115200	<input type="checkbox"/>	Disabled	AUTO	Disabled	AUTO	Disabled	AUTO
-------	---------------------------------	--------------------------	----------	------	----------	------	----------	------

