

Nazgul XL5 ECO V1.1

机架组装示意图

Frame Assembly Guide

1. 顶板

Top plate

x1

2. 中板

Counter plate

x1

3. 机臂

ArmA

x4

4. 底板

Bottom plate

x1

5. 摄像头侧板CNC

CNC camera side plate

x1

6. 脚垫打印件 TPU

Arm guard TPU

x1

7. GPS座 TPU

GPS mount TPU

x1

8. 可调节狗座底座打印件 TPU

GoPro bottom stand TPU

x1

9. 前后保险(一对分左右) TPU

Front bumpers (left & right) TPU

x1

10. 接收机座 TPU

Receiver Mount TPU

x1

11. 摄像头硅胶侧板

Silicone camera side plate

x1

12. 图传天线座打印件

Antenna TPU

x1

13. LED灯显LOGO 打印件

LED logo TPU

x1

14. BB响/蜂鸣器打印件

Buzzer holder TPU

x1

15. M3*22 圆形网纹铝柱

M3*22 Al. standoff

x5

16. M3 防松自紧螺母

M3 lock nut

x5

17. M3*8 内六角螺丝

M3*8 hex screw

x5

18. M3*10 内六角螺丝

M3*10 hex screw

x5

19. M3*14 内六角螺丝

M3*14 hex screw

x5

20. M3*30 内六角螺丝

M3*30 hex screw

x5

21. M2*5 内六角螺丝

M2*5 hex screw

x5

22. M3*9 内六角螺丝

M3*9 hex screw

x18

23. M1.6*10 杯头内六角螺丝

M1.6*10 socket head cap

x5

24. M3*29 圆形网纹铝柱

M3*29 Al. standoff

x3

25. M3*6 内六角螺丝

M3*6 hex screw

x5
26. M3*8 内六角带垫螺丝

M3*8 wash head hex screw

x5

27. M2*25 圆形网纹铝柱

M2*25 Al. standoff

x2

28. M2*8 内六角带垫螺丝

M2*8 wash head hex screw

x3

29. M2*8 内六角自攻螺丝

M2*8 self-tapping hex screw

x5

30. M2*6 内六角沉头螺丝

M2*6 countersunk hex screw

x3

31. M2*10 内六角自攻螺丝

M2*10 self-tapping hex screw

x3

32. 尾座盖 ABS

XT60 Plug Mount ABS

x1

33. 格纹硅胶电池防滑垫

Battery pad

x2

34. 侧板

Side panels

x1

附赠

Additional parts

1. XT60EW-M 公头

XT60EW-M connector with cable

x1
2. 电源线

Power cable

x2
3. 集线管

Motor wire protector

x4
4. 20*250超纤皮电池扎带

20*250 Battery strap

x2
5. M5螺母

M5 nut

x1
6. 内六角扳手

Allen wrench

x1
7. M5*20 内六角螺丝

M5*20 hex screw

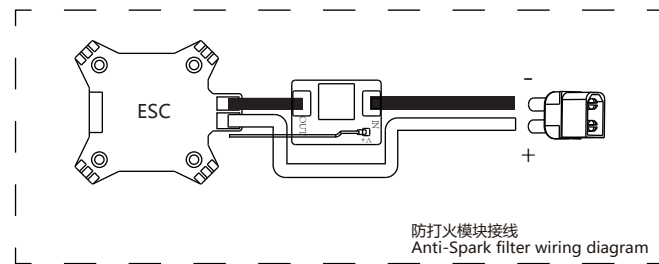
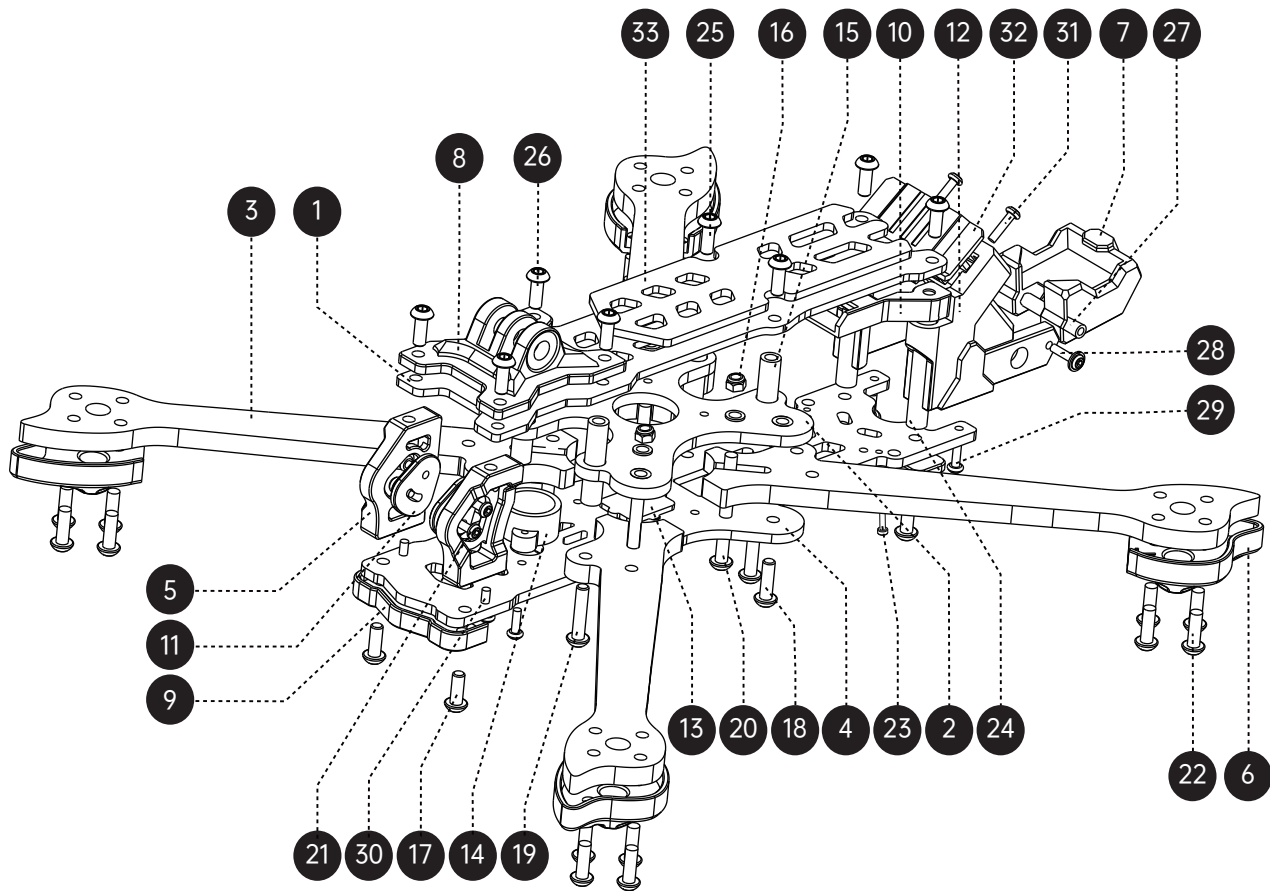
x1
8. 通用贴纸V4

Sticker V4

x1
9. PEX直头转SMA直头内针转接线 总长8CM

IPEX to RP-SMA F Adapter Cable 8CM

x2



Nazgul ECO 侧板安装示意图

Nazgu ECO Side Panel Installation Diagram

