

Chimera7 Pro V2

机架组装示意图

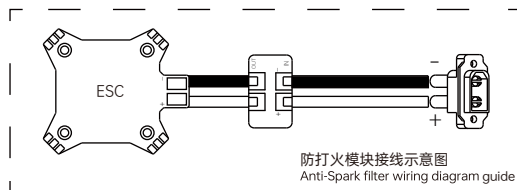
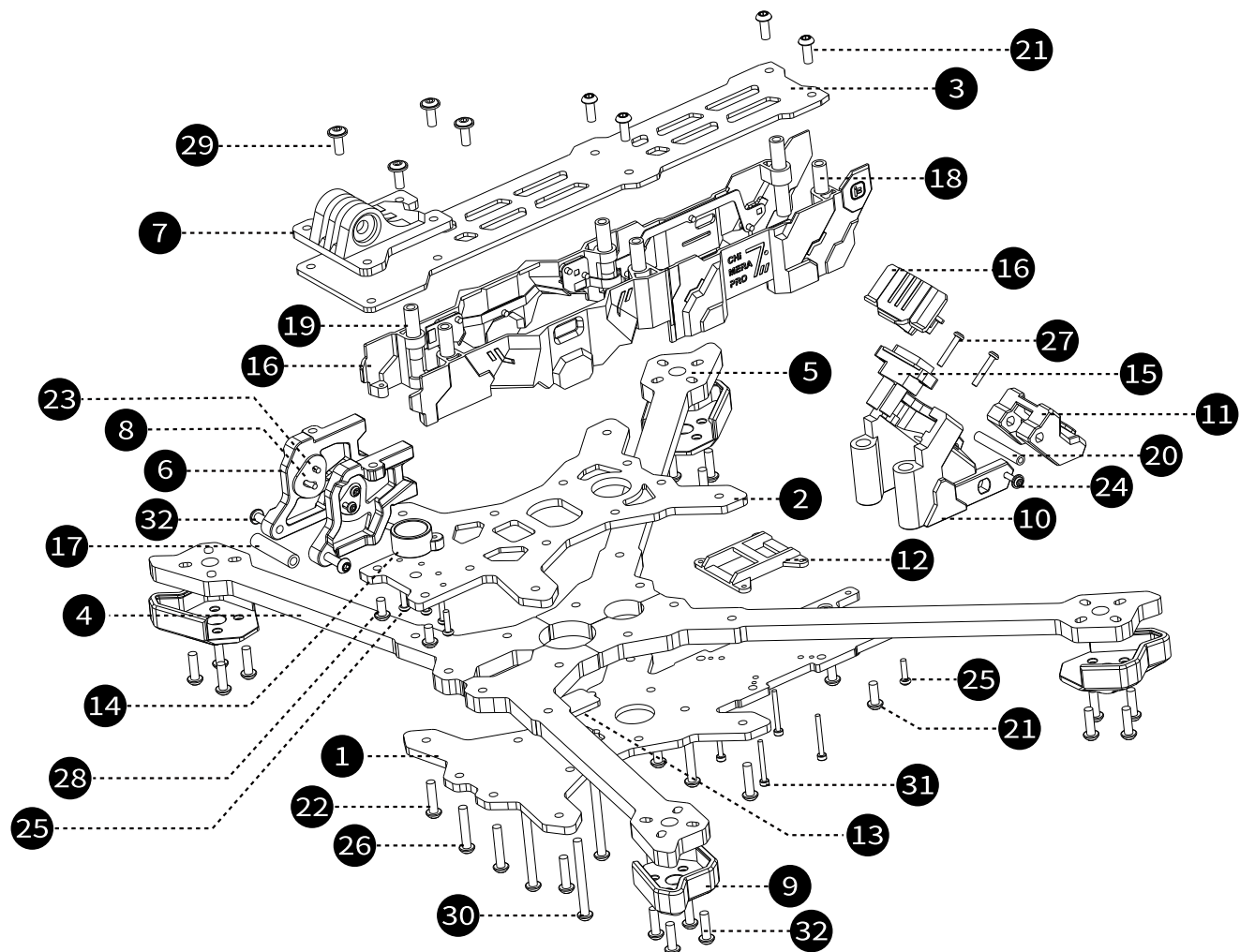
Frame Assembly Guide

1. 底板
Bottom plate x1
2. 中板
Counter plate x1
3. 顶板
Top plate x1
4. 前机臂
Front arm x2
5. 后机臂
Rear arm x2
6. 摄像头侧板CNC
CNC Camera side plate x2
7. 可调节狗底座打印件
GoPro bottom stand TPU x1
8. 双孔摄像头硅胶侧板
Dual-hole silicone camera side plate x2
9. 脚垫注塑件
Arm guard x4
10. 图传天线座注塑件
Antenna GPS座打印件 x1
11. GPS座打印件
GPS mount TPU x1
12. 接收机座注塑件
Receiver mount x1
13. LED灯显LOGO打印件
LED logo TPU x1
14. BB响/蜂鸣器注塑件
Buzzer holder x1
15. 电源线+插头
Power cable + plug x1
16. 侧板+LED灯 (已安装)
Side panels with LED (Assembled) x1
17. M3*23 圆形网纹铝柱
M3*23 Al. standoff x1
18. M3*30 圆形网纹铝柱
M3*30 Al. standoff x2
19. M3*20 圆形网纹铝柱
M3*20 Al. standoff x4
20. M2*25 圆形网纹铝柱
M2*25 Al. standoff x1
21. M3*8 内六角螺丝
M3*8 hex screw x6
22. M3*12 内六角螺丝
M3*12 hex screw x4
23. M2*5 内六角螺丝
M2*5 hex screw x4
24. M2*8 内六角带垫螺丝
M2*8 wash head hex screw x2
25. M2*8 内六角自攻螺丝
M2*8 self-tapping hex x6
26. M3*16 内六角螺丝
M3*16 hex screw x4

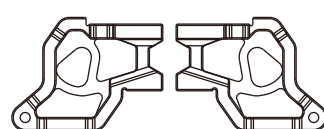
27. M2*12 内六角自攻螺丝
M2*12 self-tapping hex screw x2
28. M3*6 内六角螺丝
M3*6 hex screw x6
29. M3*8 内六角带垫螺丝
M3*8 wash head hex screw x4
30. M3*30 内六角螺丝
M3*30 hex screw x4
31. M1.6*16 内六角杯头螺丝
M1.6*16 socket head cap screws x4
32. M3*11 内六角螺丝
M3*11 hex screw x20

(附赠)/(Additional parts)

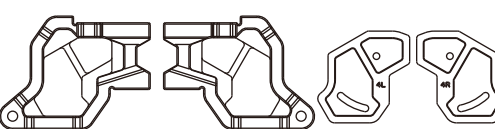
1. 高清图传散热片
Heatsink for O3 Air Unit x1
2. 立式T型天线座打印件
Vertical 900 antenna TPU x1
3. 集线管
Motor wire protector x8
4. 20*300 超纤皮电池扎带
20*300 Battery strap x2
5. 215mm同轴线
215mm Coaxial cable x1
6. 四线 端子线
4 Pin cable x1
7. LED+BB响分电路板
LED+Buzzer PCB x1
8. M3 防松自紧螺母
M3 lock nut x4
9. 内六角扳手
Allen wrench x1
10. M5*20 内六角螺丝
M5*20 hex screw x1
11. M5法兰螺母
M5 nut x1
12. 通用贴纸
Sticker x1
13. 格纹硅胶电池防滑垫
Battery pad x2
14. IPEX直头转SMA直头内针转接线 长80MM
IPEX to RP-SMA F Adapter Cable 80MM x2
15. 2*4*6.5 双通尼龙柱
2*4*6.5 Double nylon cylinder x4
16. M1.6 螺母
M1.6 nut x5
17. 单孔摄像头硅胶侧板
Single-hole silicone camera side plate x2



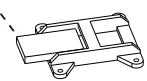
DJI O3版本使用此CNC&硅胶侧板&M1.6*16杯头螺丝
The DJI O3 version uses CNC & silicone side panel with M1.6*10 cup head screws.



DJI O4 Pro版本使用此CNC&硅胶侧板&M2*6螺丝
The DJI O4 Pro version uses CNC & silicone side panel with M2*6 screws.



ELRS/TBS



接收机组装示意图
Heatsink assembly guide