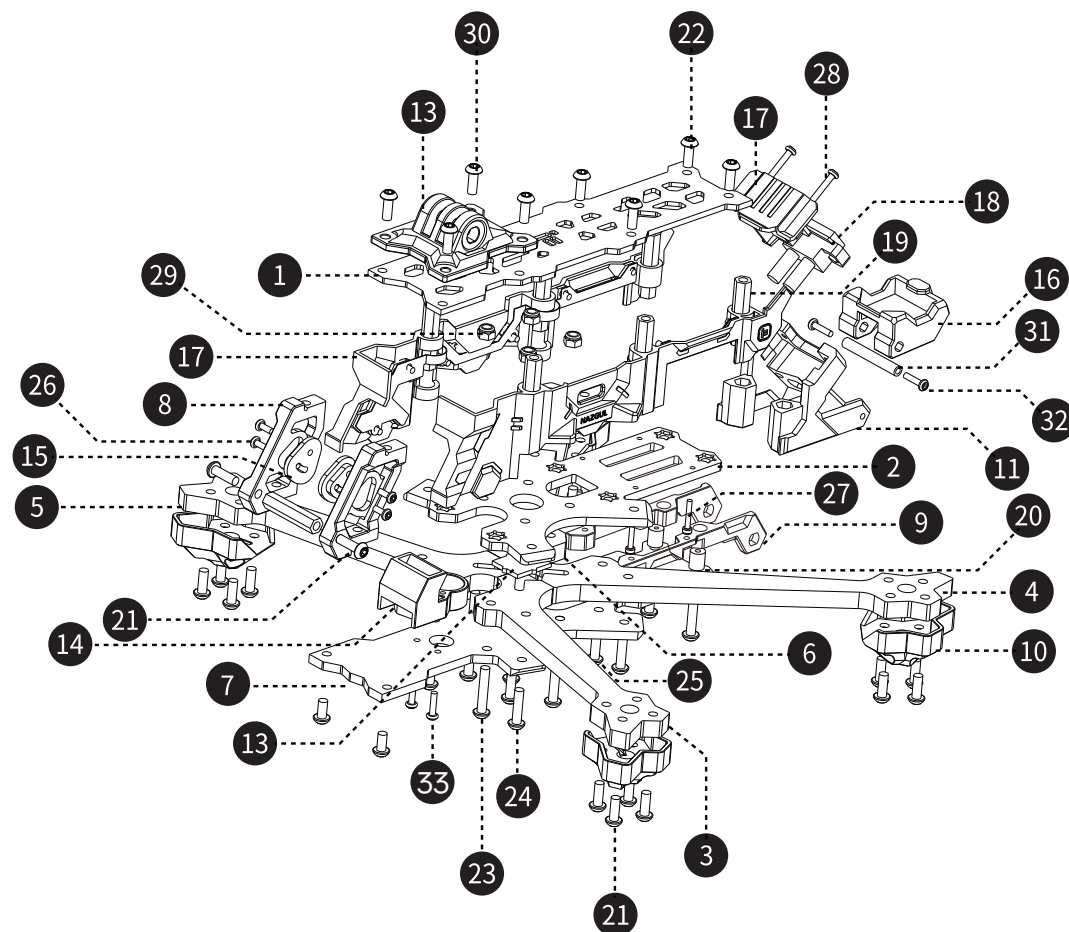


### 机架组装示意图

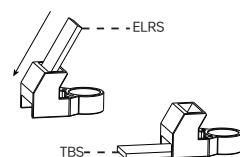
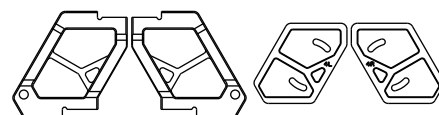
# Frame Assembly Guide

- |     |  |     |                                |   |    |
|-----|--|-----|--------------------------------|---|----|
| 1.  | 顶板<br>Top plate                                  | x1  | 26.                            | M2*5 内六角螺丝<br>M2*5 hex screw                                  | x5 |
| 2.  | 中板<br>Counter plate                              | x1  | 27.                            | M2*8 内六角螺丝<br>M2*8 hex screw                                  | x5 |
| 3.  | 机臂A_L<br>ArmA_L                                  | x1  | 28.                            | M2*10 内六角自攻螺丝<br>M2*10 self-tapping hex screw                 | x2 |
| 4.  | 机臂B_L<br>ArmB_L                                  | x1  | 29.                            | M3 防松自紧螺母<br>M3 lock nut                                      | x4 |
| 5.  | 机臂A_R<br>ArmA_R                                  | x1  | 30.                            | M3*8 内六角带垫螺丝<br>M3*8 wash head hex screw                      | x6 |
| 6.  | 机臂B_R<br>ArmB_R                                  | x1  | 31.                            | M2*25 圆形网纹铝柱<br>M2*25 Al. standoff                            | x1 |
| 7.  | 底板<br>Bottom plate                               | x1  | 32.                            | M2*8 内六角带垫螺丝<br>M2*8 wash head hex screw                      | x2 |
| 8.  | 摄像头侧板CNC<br>CNC camera side plate                | x2  | 33.                            | M2*8 内六角自攻螺丝<br>M2*8 self-tapping hex screw                   | x2 |
| 9.  | 900 天线座打印件<br>900 Antenna TPU                    | x2  | <b>(附赠)/(Additional parts)</b> |   |    |
| 10. | 脚垫打印件<br>Arm guard TPU                           | x4  | 1.                             | 橡胶O型圈<br>Rubber O-Ring dampers                                | x8 |
| 11. | 图传天线座打印件<br>Antenna TPU                          | x1  | 2.                             | 集线管<br>Motor wire protector                                   | x4 |
| 12. | LED灯显LOGO 打印件<br>LED logo TPU                    | x1  | 3.                             | LED 中板 PCB-2<br>Middle plate LED PCB-2                        | x1 |
| 13. | 可调节狗座底座注塑件<br>GoPro bottom stand                 | x1  | 4.                             | LED+BB响分电路板<br>LED+Buzzer PCB                                 | x1 |
| 14. | BB响/蜂鸣器注塑件<br>Buzzer holder                      | x1  | 5.                             | 三线 端子线<br>3 Pin cable   | x1 |
| 15. | 摄像头硅胶侧板<br>Silicone camera side plate            | x2  | 6.                             | 四线 端子线<br>4 Pin cable   | x1 |
| 16. | GPS座<br>GPS mount TPU                            | x1  | 7.                             | 20*250超纤皮电池扎带<br>20*250 Battery strap                         | x1 |
| 17. | 侧板+LED灯(已安装)<br>Side panels with LED (Assembled) | x1  | 8.                             | 15*250超纤皮电池扎带<br>15*250 Battery strap                         | x1 |
| 18. | 电源线+插头<br>Power cable + plug                     | x1  | 9.                             | LED导光条<br>LED light strap                                     | x4 |
| 19. | M3*23 六角形铝柱<br>M3*23 hex Al. standoff            | x7  | 10.                            | 格纹硅胶电池防滑垫<br>Battery pad                                      | x2 |
| 20. | 3*5*6 双通铝柱<br>3*5*6 Double-pass Al. standoff     | x2  | 11.                            | M5螺母<br>M5 nut  | x1 |
| 21. | M3*10 内六角螺丝<br>M3*10 hex screw                   | x20 | 12.                            | 内六角扳手<br>Allen wrench   | x1 |
| 22. | M3*6 内六角螺丝<br>M3*6 hex screw                     | x12 | 13.                            | M5*20 内六角螺丝<br>M5*20 hex screw                                | x1 |
| 23. | M3*16 内六角螺丝<br>M3*16 hex screw                   | x6  | 14.                            | 通用贴纸V4<br>Sticker V4  | x1 |
| 24. | M3*12 内六角螺丝<br>M3*12 hex screw                   | x4  | 15.                            | IPEX直头转SMA直头内针转接线 总长6CM<br>IPEX to RP-SMA F Adapter Cable 6CM | x2 |
| 25. | M3*30 内六角螺丝<br>M3*30 hex screw                   | x4  |                                |   |    |

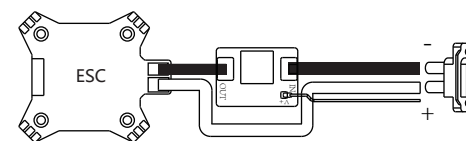


DJI O4 Pro版本使用此CNC&硅胶侧板&M2\*8螺丝  
The DJI O4 Pro version uses CNC & silicone side panel with M2\*8 screws.

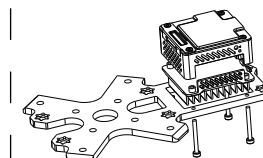
DJI O3版本使用此CNC&硅胶侧板&M1.6\*10杯头螺丝  
The DJI O3 version uses CNC & silicone side panel  
with M1.6\*10 cup head screws.



接收机组装示意图  
Heatsink assembly guide



防打火模块接线示意图  
Anti-Spark filter wiring diagram guide



散热片组装示意图  
Receiver assembly guide