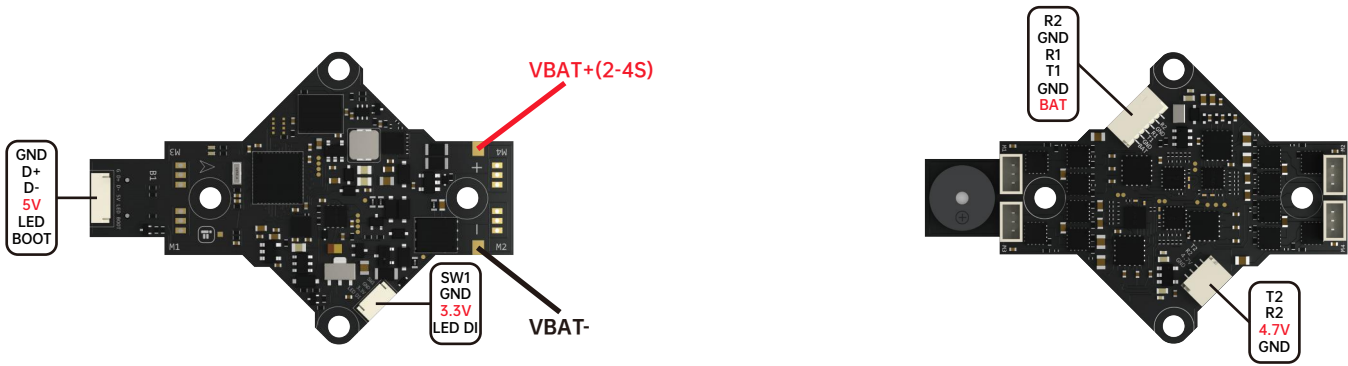
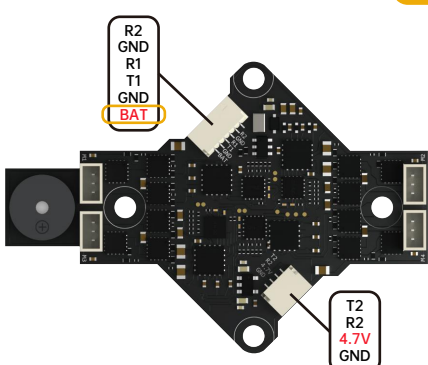


Defender 16/20 F411 AIO Wiring Diagram

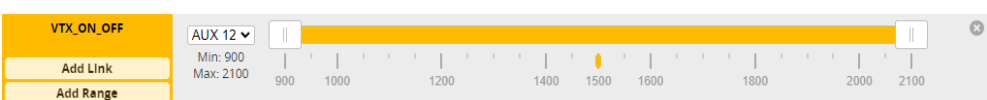


Notice

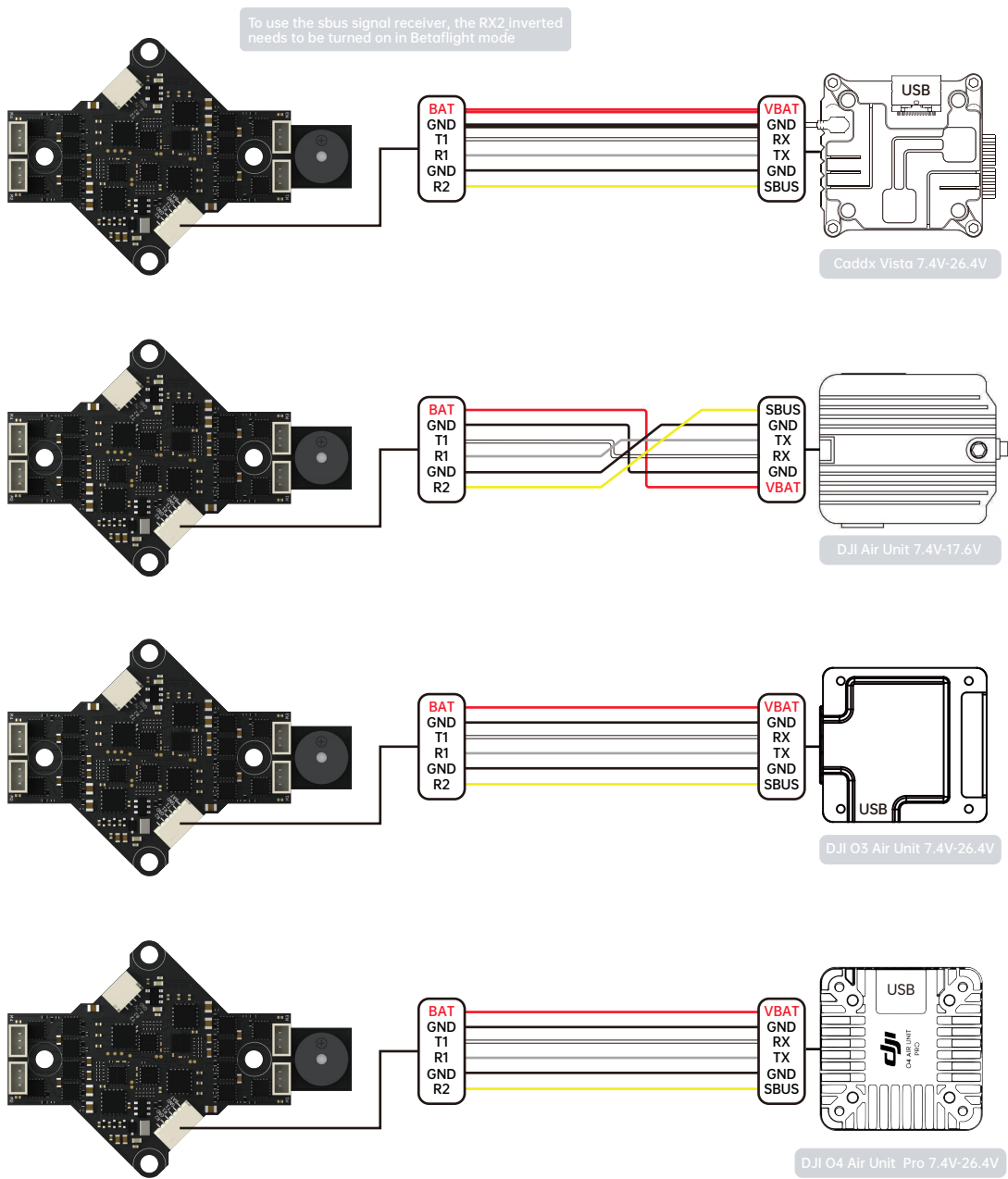
FC Firmware: iFLIGHT_DEFENDER_F411
ESC Firmware: Q-H-50 - Bluejay, 0.16



BAT is a controllable output port. When the DJI Air Unit or any VTX is connected to BAT, ensure that VTX ON OFF is always enable in Betaflight (place the AUX in any idle one), and set the AUX channel corresponding to the remote control switch if you wanna the VTX power to be controllable.



DJI Digital transmitters

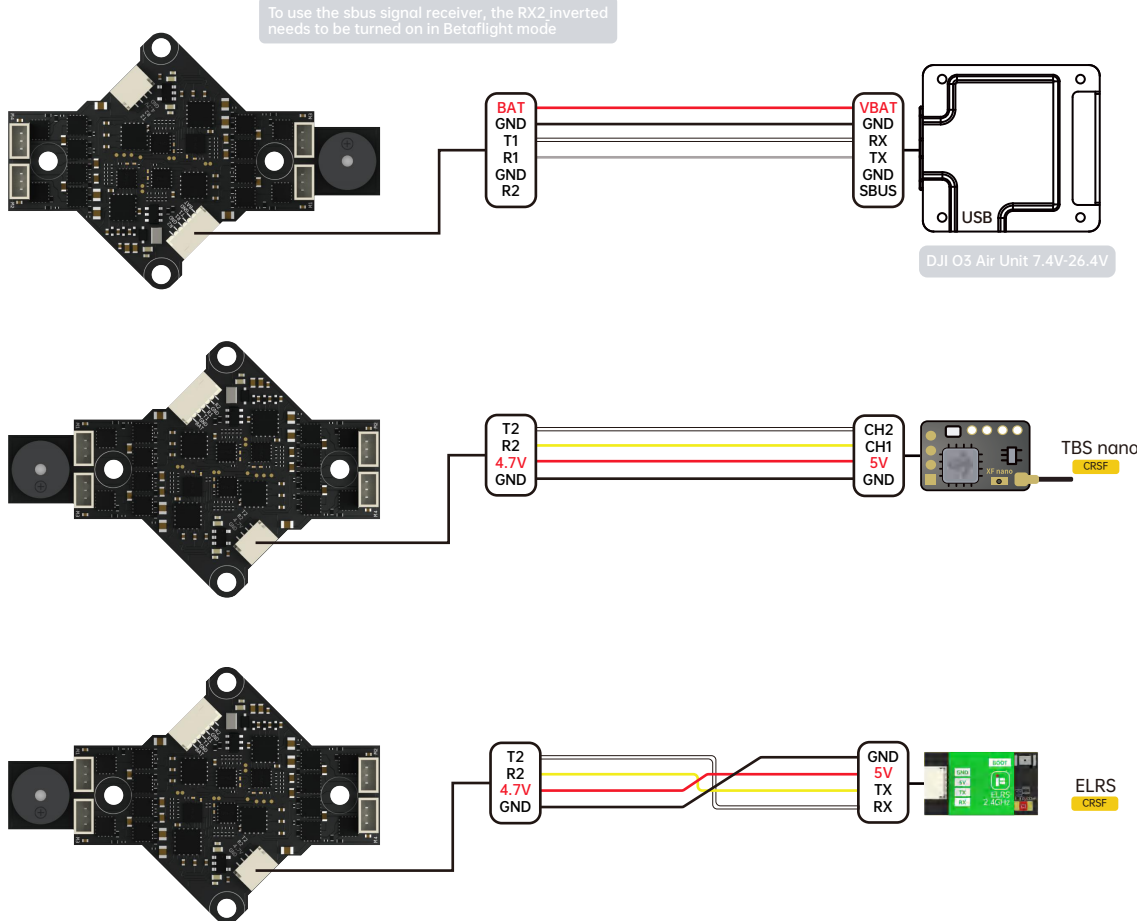


Identifier	Configuration/MSP	Serial Rx	Telemetry/Output	Sensor Input	Peripherals
USB VCP	115200	Disabled	Disabled	Disabled	Disabled
UART1	115200	Disabled	Disabled	Disabled	VTX (MSP+D) - AUTO
UART2	115200	Disabled	Disabled	Disabled	Disabled

Receiver configuration settings for UART1 and UART2.

- To enable the air unit OSD under Betaflight 4.4 version, you need to select VTX (MSP+Displayport) in the peripheral port where the air unit signal is connected to the port interface.
- note: DJI FPV Remote Controller2 is for DJI O3 Air Unit
DJI FPV Remote Controller is for DJI Air Unit and Visto
- Please check your protocols, otherwise your DJI Radio won't input signals!
DJI Goggle protocol and Betaflight protocol has to match!
For lower signal latency use the SBUS BAUD.FAST protocol option on both ends.
- For Betaflight Copy Paste "set sbus baud fast=on" into your Betaflight Configurator CLI then hit enter.
Use "save" and hit enter to save the changes.
Default: sbus baud fast=off, Goggle protocol set to NORMAL

Any other receiver

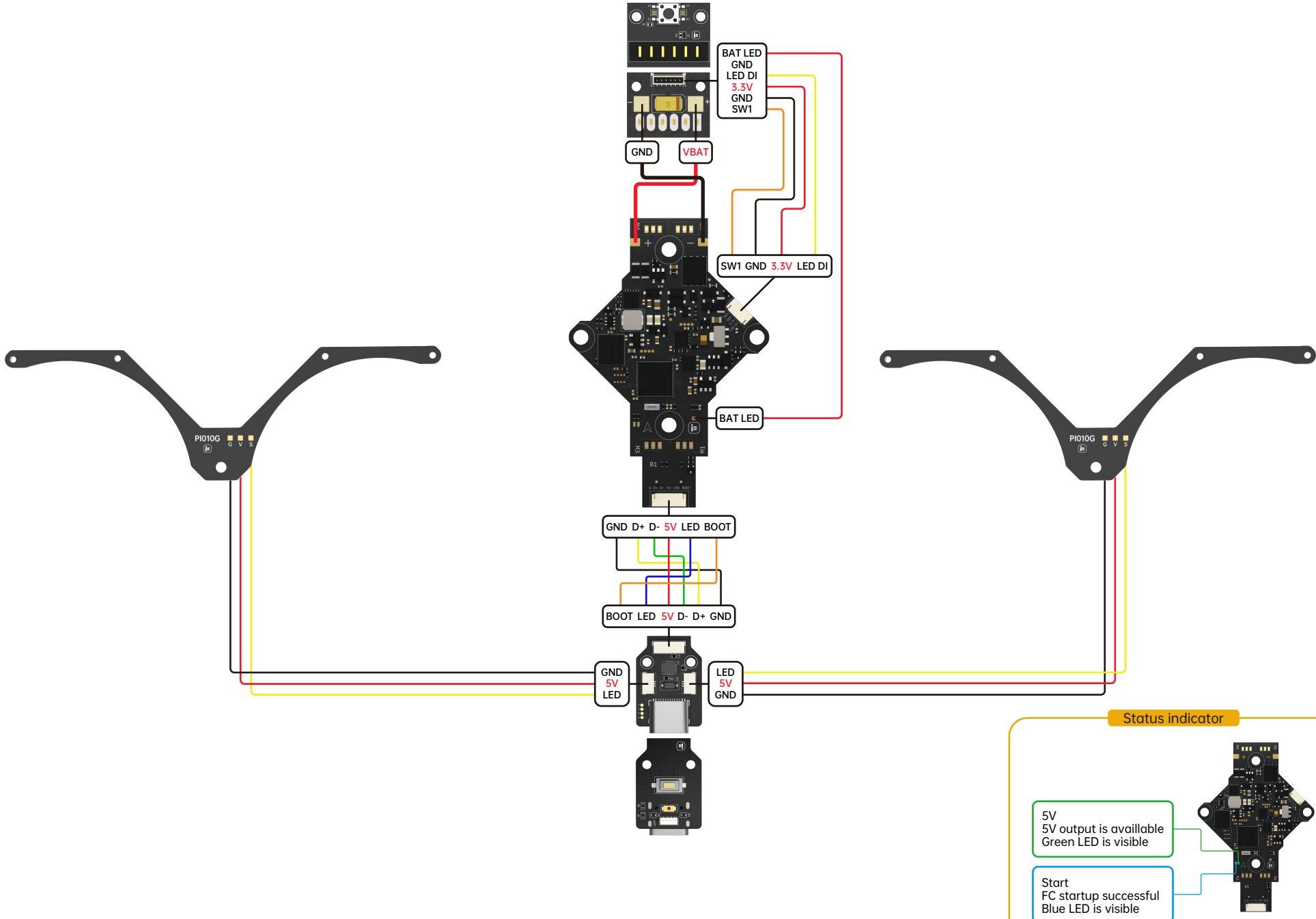


Do not connect "SBUS" to the FC while using any other receiver

Identifier	Configuration/MSP	Serial Rx	Telemetry/Output	Sensor Input	Peripherals
USB VCP	115200	Disabled	Disabled	Disabled	Disabled
UART1	115200	Disabled	Disabled	Disabled	VTX (MSP+D) - AUTO
UART2	115200	Disabled	Disabled	Disabled	Disabled

Receiver configuration settings for UART1 and UART2.

Wiring diagram overview



Motors

ESC Firmware: Q-H-50 - Bluejay, 0.16

