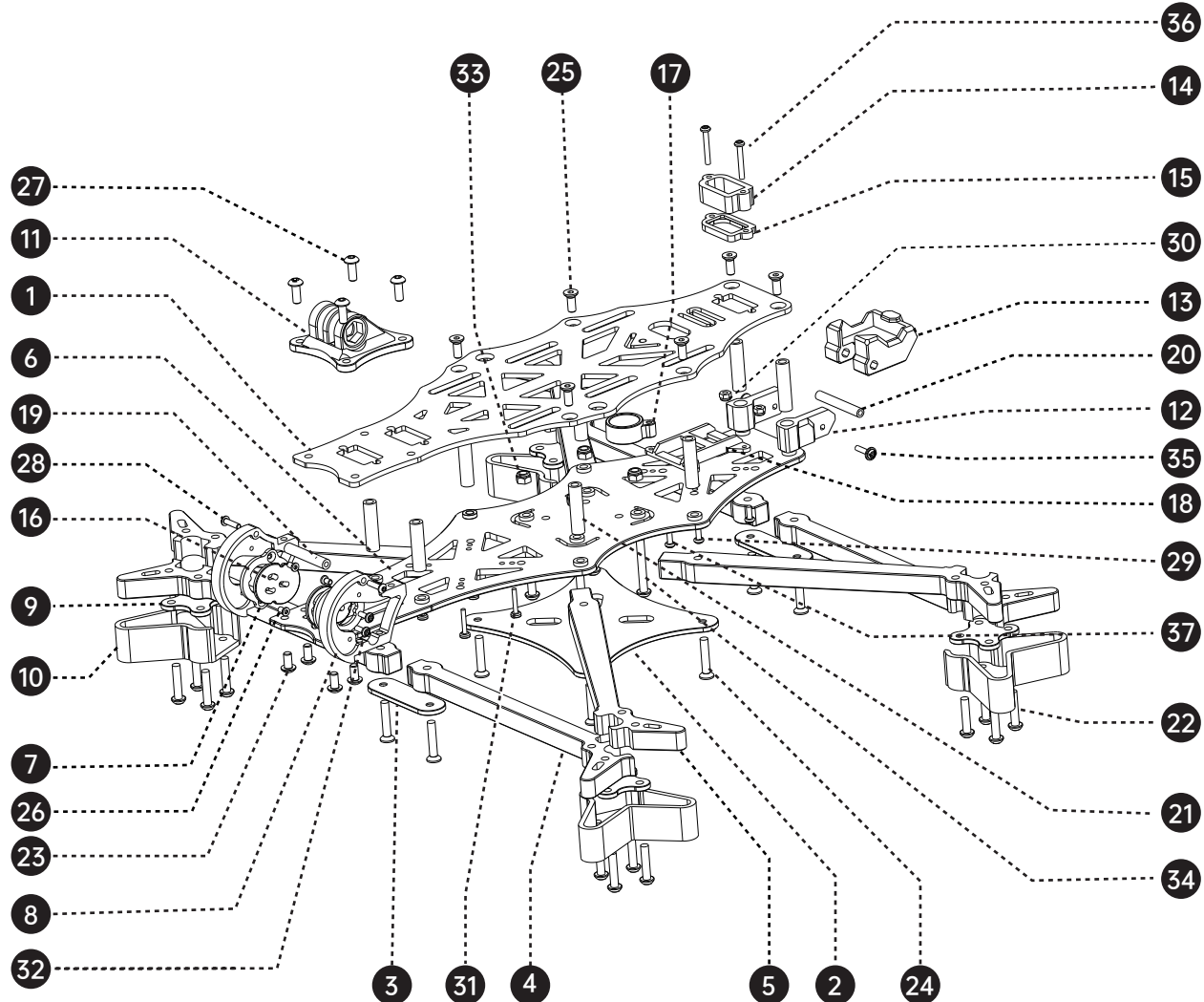


# AOS 7 V5

## 机架组装示意图

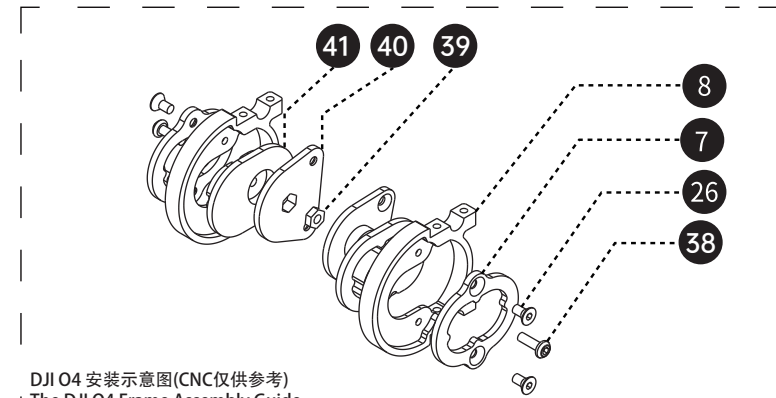
## Frame Assembly Guide

1. 顶板 Top plate	x1	27. M3*8 内六角螺丝 M3*8 hex screw	x6
2. 中板A Counter plate A	x1	28. M2*8 内六角螺丝 M2*8 hex screw	x4
3. 中板 B Counter plate B	x2	29. M2*5 内六角自攻螺丝 M2*5 self-tapping hex screw	x4
4. 机臂 A Arm A	x4	30. M2 防松自紧螺母 M2 lock nut	x3
5. 机臂 B Arm B	x4	31. M1.6*10 杯头内六角螺丝 M1.6*10 socket head cap	x5
6. 底板 Bottom plate	x1	32. M2*5 内六角螺丝 M2*5 hex screw	x5
7. O3 摄像头固定侧板 O3 camera side plate	x2	33. M3 防松自锁螺母 M3 lock nut	x5
8. CNC 摄像头侧板 CNC camera side plate	x2	34. M3*22 内六角螺丝 M3*22 hex screw	x5
9. 电机座 Motor mount	x4	35. M2*8 带垫内六角螺丝 M2*8 wash head hex screw	x3
10. 脚垫打印件 Arm guard TPU	x4	36. M2*14 内六角螺丝 M2*14 hex screw	x3
11. 可调节狗座底座打印件 GoPro bottom stand TPU	x1	37. M2*8 内六角自攻螺丝 M2*8 self-tapping hex screw	x2
12. GPS支架 TPU GPS bracket TPU	x2	38. M2*6 内六角螺丝 M2*6 hex screw	x8
13. GPS座打印件 GPS mount TPU	x1	39. M2 螺母 M2 nut	x3
14. 固定XT60上盖打印件 XT60 upper mount TPU	x1	40. O4 Pro 支架 TPU O4 Pro bracket TPU	x2
15. 固定XT60下盖打印件 XT60 bottom mount TPU	x1	41. O4减震垫 TPU O4 Vibration DampersTPU	x2
16. 摄像头硅胶侧板 Silicone camera side plate	x2	(附赠)/(Additional parts)	
17. BB响/蜂鸣器打印件 Buzzer holder TPU	x1	1. 模拟摄像头固定侧板 Analog camera side plate	x2
18. 接收机座打印件 Receiver mount TPU	x1	2. IPEX直头转SMA直头内针转接线 长80MM IPEX to RP-SMA F Adapter Cable 80MM	x2
19. M2*23 圆形网纹铝柱 M2*23 Al. standoffv	x2	3. 内六角扳手 Allen wrench	x1
20. M2*25 圆形网纹铝柱 M2*25v Al. standoffv	x2	4. M5法兰螺母 M5 nut	x1
21. M3*20 圆形网纹铝柱 M3*20 Al. standoffv	x9	5. M5*20 内六角螺丝 M5*20 hex screw	x1
22. M3*14 内六角螺丝 M3*14 hex screw	x20	6. 集线管 Motor wire protecto	x4
23. M3*6 内六角螺丝 M3*6 hex screw	x10	7. 20*300 超纤皮电池扎带 20*300 Battery strap	x2
24. M3*18 沉头内六角螺丝 M3*18 countersunk hex screw	x10	8. 电池硅胶防滑垫 Battery pad	x2
25. M3*8 沉头内六角螺丝 M3*8 countersunk hex screw	x8	9. 自锁尼龙扎带 Self-locking nylon zip ties	x10
26. M2*3 沉头内六角螺丝 M2*3 countersunk hex screw	x5	10. 通用贴纸 V4 Sticker V4	x1



(附赠)/(Additional parts)

11. 电源线+插头 Power cable + plug	x1
12. 蜂鸣器 Buzzer	x1
13. M2*5 沉头内六角螺丝 M2*5 countersunk hex screw	x5
14. M2*6 沉头内六角螺丝 M2*6 countersunk hex screw	x5
15. O4 Pro 支架 (ND 镜) TPU O4 Pro bracket (ND filter)TPU	x2
16. O4 支架 TPU O4 bracket TPU	x2
17. M3 螺母 M3 nut	x5
18. SH1.0 4P 两线 单头端子线 总长85mm SH1.0 4P single-end cable 85mm	x1



DJI O4 安装示意图(CNC仅供参考)  
The DJI O4 Frame Assembly Guide