

HELION

机架组装示意图

Frame Assembly Guide

1. 底板

Bottom plate

x1
2. 中板

Counter plate

x1
3. 侧板

Side plate

x2
4. 前机臂

Front arm

x2
5. 后机臂

Rear arm

x2
6. 摄像头侧板CNC

CNC Camera side plate

x2
7. 侧板固定件A CNC

CNC Side panels fixed mount A

x1
8. 侧板固定件B CNC

CNC Side panels fixed mount B

x1
9. 可调节脚座底座打印件

GoPro bottom stand TPU

x1
10. 摄像头硅胶侧板

Camera vibration dampers silicone

x2
11. 前保护板打印件

Front bumper TPU

x1
12. 图传天线座打印件

Antenna mount TPU

x1
13. T 型天线座A打印件

T-type antenna mount TPU A

x1
14. XT90固定座打印件

XT90 plug mount TPU

x1
15. 外壳+LED灯 (已安装)

Canopy with LED (Assembled)

x1
16. M3\*23圆形网纹铝柱

M3\*23 Al. standoff

x4
17. M3\*48内六角螺丝

M3\*48 hex screw

x2
18. M3\*22内六角螺丝

M3\*22 hex screw

x3
19. M3\*11内六角螺丝

M3\*11 hex screw

x18
20. M3\*6内六角螺丝

M3\*6 hex screw

x6
21. M3\*24沉头内六角螺丝

M3\*24 countersunk hex screw

x5
22. M3\*19沉头内六角螺丝

M3\*19 countersunk hex screw

x7
23. M3\*16沉头内六角螺丝

M3\*16 countersunk hex screw

x12
24. 2.7\*4\*2 双通尼龙柱

2.7\*4\*2 Dual-pass nylon standoff

x5
25. M3\*8沉头内六角螺丝

M3\*8 countersunk hex screw

x20
26. 2.7\*4\*4 双通尼龙柱

2.7\*4\*4 Dual-pass nylon standoff

x3

27. M2\*6内六角螺丝

M2\*6 hex screw

x5
28. M2\*7内六角螺丝

M2\*7 hex screw

x9
29. M2\*8内六角自攻螺丝

M2\*8 self-tapping hex screw

x3
30. M2\*10沉头内六角螺丝

M2\*10 countersunk hex screw

x5
31. M3防松自紧螺母

M3 lock nut

x6
32. M3螺母

M3 nut

x5
33. BEC 电源模块

BEC Module

x1

- 附赠
- Additional parts
1. 集线管

Motor wire protector

x8
2. 格纹硅胶电池防滑垫

Battery pad

x2
3. 内六角扳手

Allen wrench

x1
4. M5\*20 内六角螺丝

M5\*20 hex screw

x1
5. M5法兰螺母

M5 nut

x1
6. 通用贴纸V4

Sticker V4

x1
7. 20\*300 超纤皮电池扎带

20\*300 Battery strap

x2
8. T 型天线座B打印件

T-type antenna mount TPU B

x1
9. 双Type-C 转接线

Dual type-c adapter cable

x1
10. 接收机座打印件

Receiver mount TPU

x1
11. 飞控隔板打印件

FC spacer mount TPUv

x1
12. IPEX直头转SMA直头内针转接线

IPEX to RP-SMA F Adapter Cable

x2
13. 避震橡胶O型圈

Rubber Damper Ball O-Ring

x9
14. XT90H-M 插头 带线#10 103mm

XT90H-M Connector #10 Wire 103mm

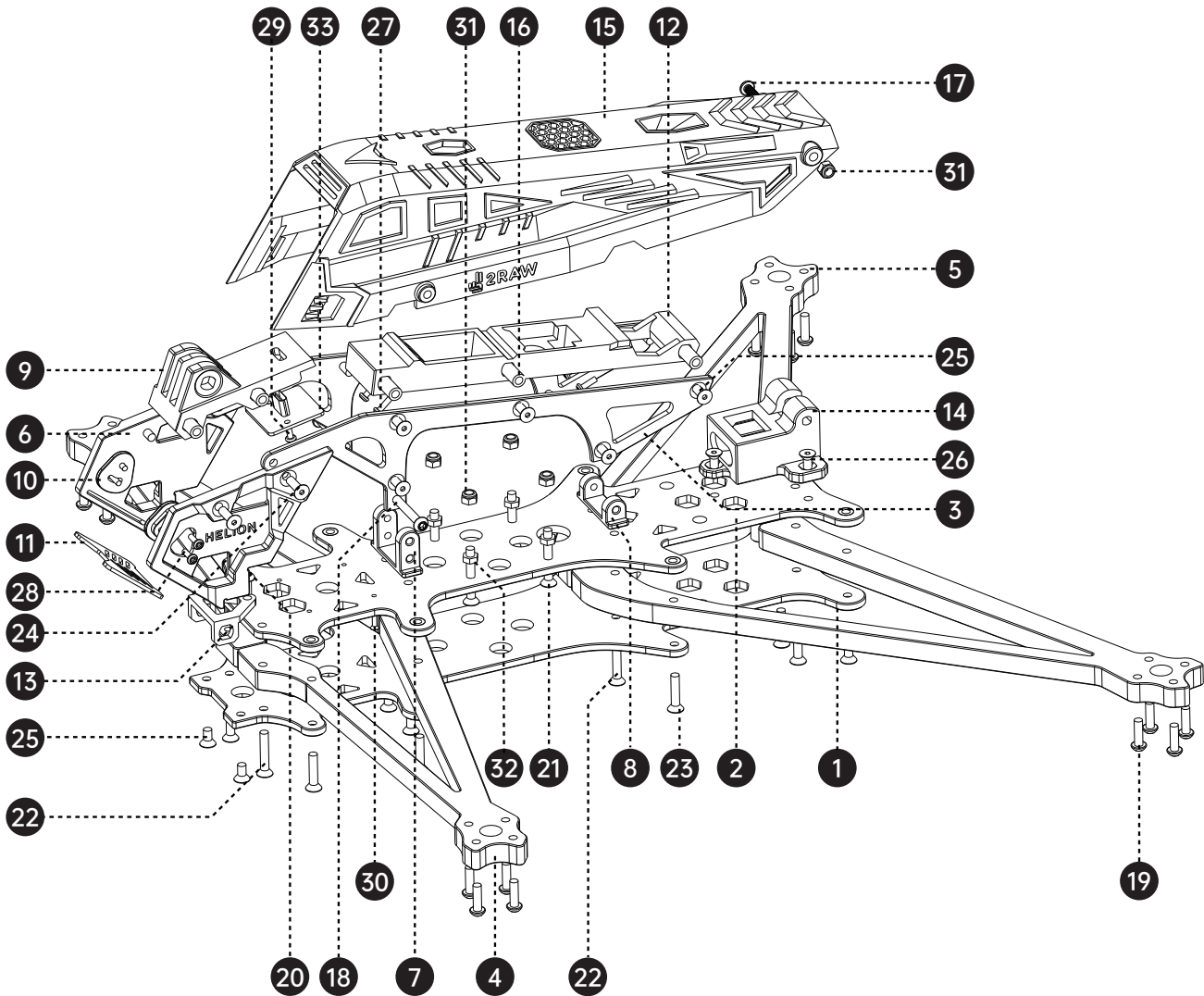
x1
15. 自锁尼龙扎带 3\*100

Self-Locking Nylon Zip Tie (3\*100mm)

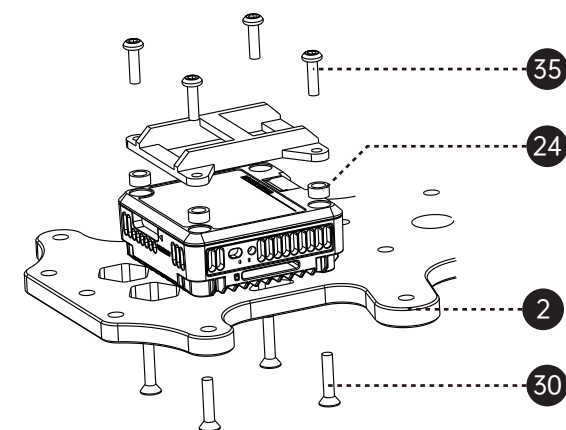
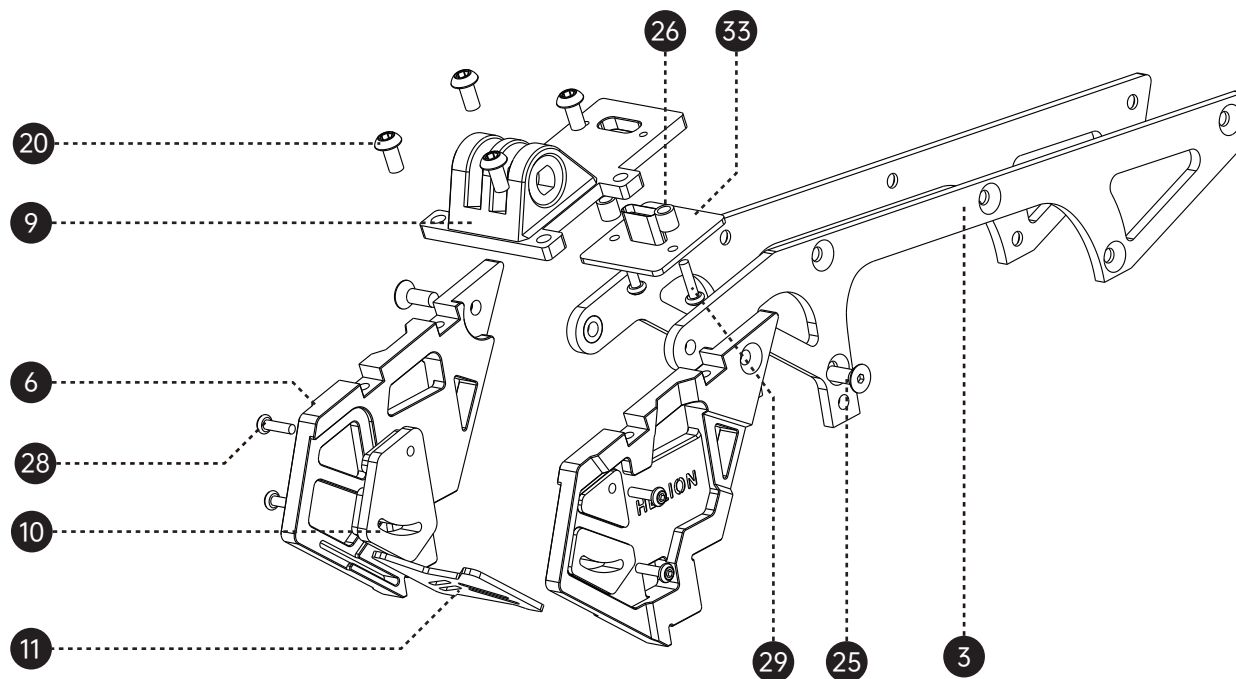
x1
16. SH1.0 2P 单头端子线 115mm

SH1.0 2P Terminal Cable 115mm

x1



# DJI O4版本安装示意图 DJI O4 Version Assembly diagram



DJI O4天空端&接收机座安装示意图  
DJI O4 Air Unit & Receiver Assembly diagram

DJI O3版本使用此CNC&硅胶侧板&可调节狗座底座打印件&M2\*5螺丝&M3\*8沉头螺丝&前保护板打印件  
DJI O3 version use this CNC & Silicone camera side plate & Adjustable TPU GoPro mount & M2\*5 screws & M3\*8 countersunk screws & TPU front protection plate

