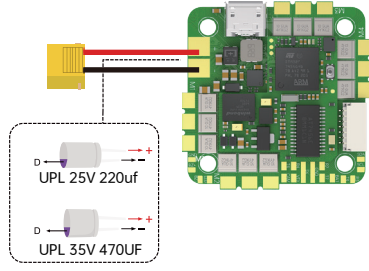
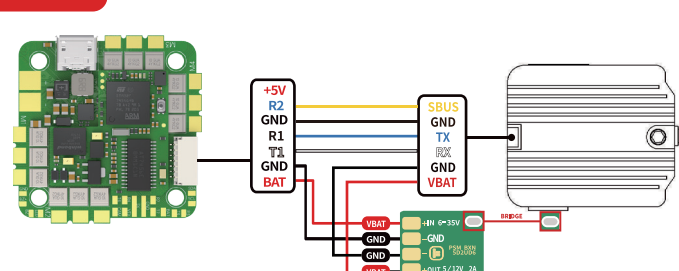


# iFlight BLITZ Whoop F7 AIO Wiring Diagram

## Caution

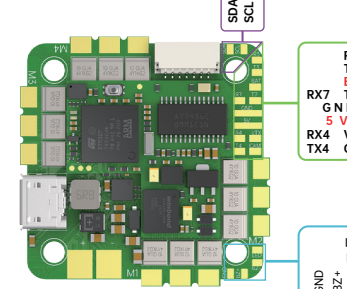
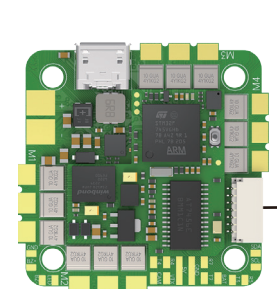


- This is a tiny high power AIO board! It's necessary to add a low ESR capacitor on your battery pads or battery lead! There's a choice of capacitors already in the package.
- 4s motors usually need 25v/220uF and up, for bigger and more aggressive 6s motors use at least 35v/470uF. It's necessary to protect the hardware from motor generated back emf and voltage spikes.



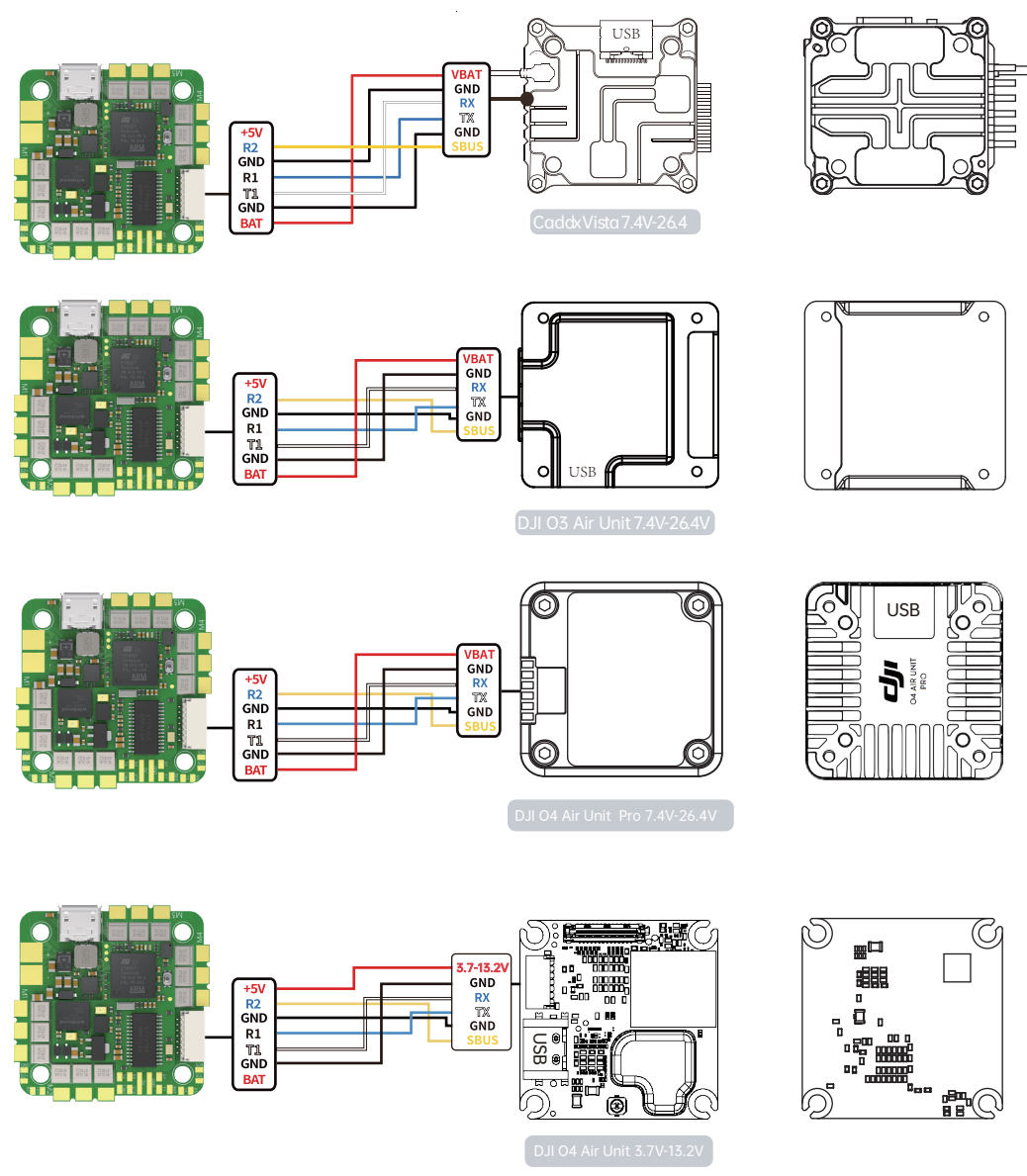
The DJI Plug&Play connector has a VBAT passthrough! Please remember, the DJI Air Unit can just handle voltage up to 4S! To fly up to 6S batteries, please use an additional BEC (Voltage regulator).

## Pad definition



## DJI Digital transmitters

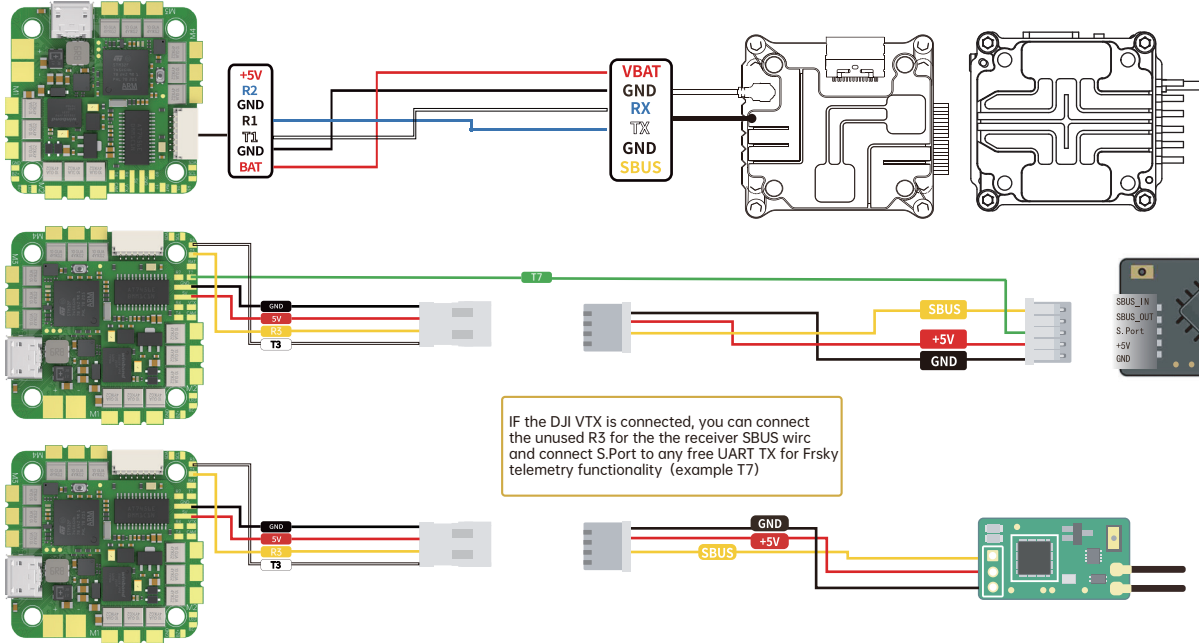
FC Firmware (UART): R072, F7, AIO, F5 Firmware (UART)



Identifier	Configuration/MSP	Serial Rx	Telemetry Output	Serial Input	Pin/pads
USB VCP	115200		Disabled / AUTO	Disabled / AUTO	Disabled / AUTO
UART1	115200		Disabled / AUTO	Disabled / AUTO	Disabled / AUTO
UART2	115200		Disabled / AUTO	Disabled / AUTO	Disabled / AUTO
UART3	115200		Disabled / AUTO	Disabled / AUTO	Disabled / AUTO
UART4	115200		Disabled / AUTO	Disabled / AUTO	Disabled / AUTO
UART5	115200		Disabled / AUTO	Disabled / AUTO	Disabled / AUTO
UART6	115200		Disabled / AUTO	Disabled / AUTO	Disabled / AUTO
UART7	115200		Disabled / AUTO	Disabled / AUTO	Disabled / AUTO
UART8	115200		Disabled / AUTO	Disabled / AUTO	Disabled / AUTO

- Please check your protocols, otherwise your DJI Radio won't DJI Goggle protocol and Betaflight protocol has to match! For lower signal latency use the SBUS\_BAUD\_FAST protocol option on both ends. For Betaflight Copy/Paste "set sbus\_baud\_fast=on" into your Betaflight Configurator CLI then hit enter. Use "save" and hit enter to save the changes. Default: sbus\_baud\_fast=off, Goggle protocol set to NORMAL
- For DJI O3 Air Unit, in the Betaflight Configurator CLI, Set osd device to MSP: "set osd\_displayport = MSP" Specify the serial port of msp\_displayport as 0 (the msp in this place should be the serial port number minus 1): "set displayport\_msp\_serial = 0" then type "save" and exit

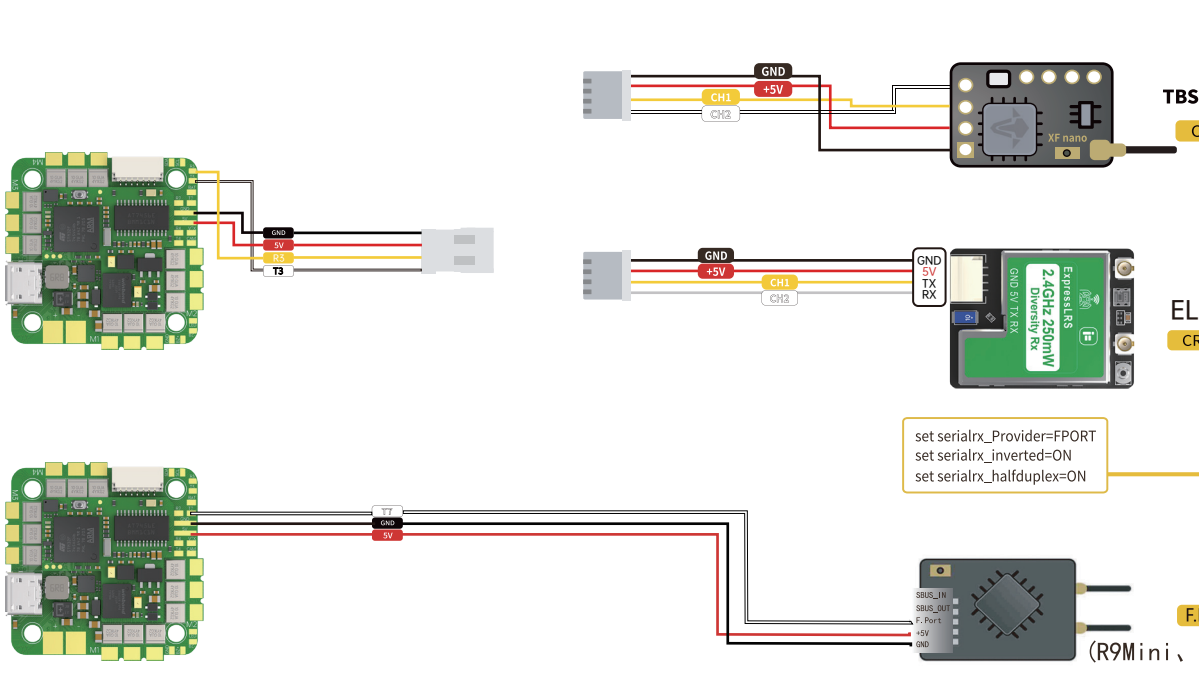
## Others Receivers



When not using the DJI remote controller, don't connect the SBUS and GND.

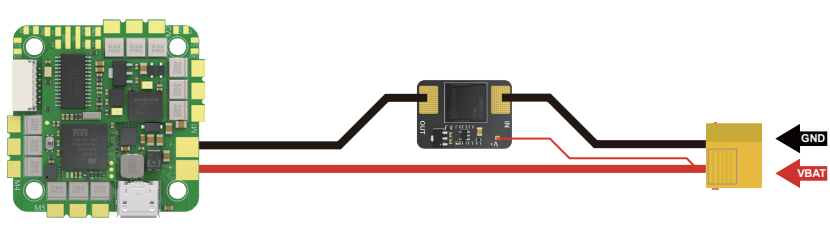
If the DJI VTX is connected, you can connect the unused RS for the receiver SBUS wire and connect S.Port to any free UART TX for Frsky telemetry functionality (example T7)

Identifier	Configuration/MSP	Serial Rx
USB VCP	115200	
UART1	115200	
UART2	115200	
UART3	115200	
UART4	115200	
UART5	115200	
UART6	115200	
UART7	115200	
UART8	115200	

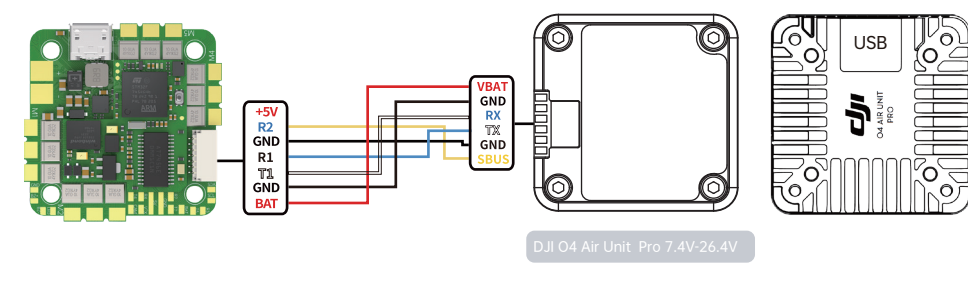


Identifier	Configuration/MSP	Serial Rx
USB VCP	115200	
UART1	115200	
UART2	115200	
UART3	115200	
UART4	115200	
UART5	115200	
UART6	115200	
UART7	115200	
UART8	115200	

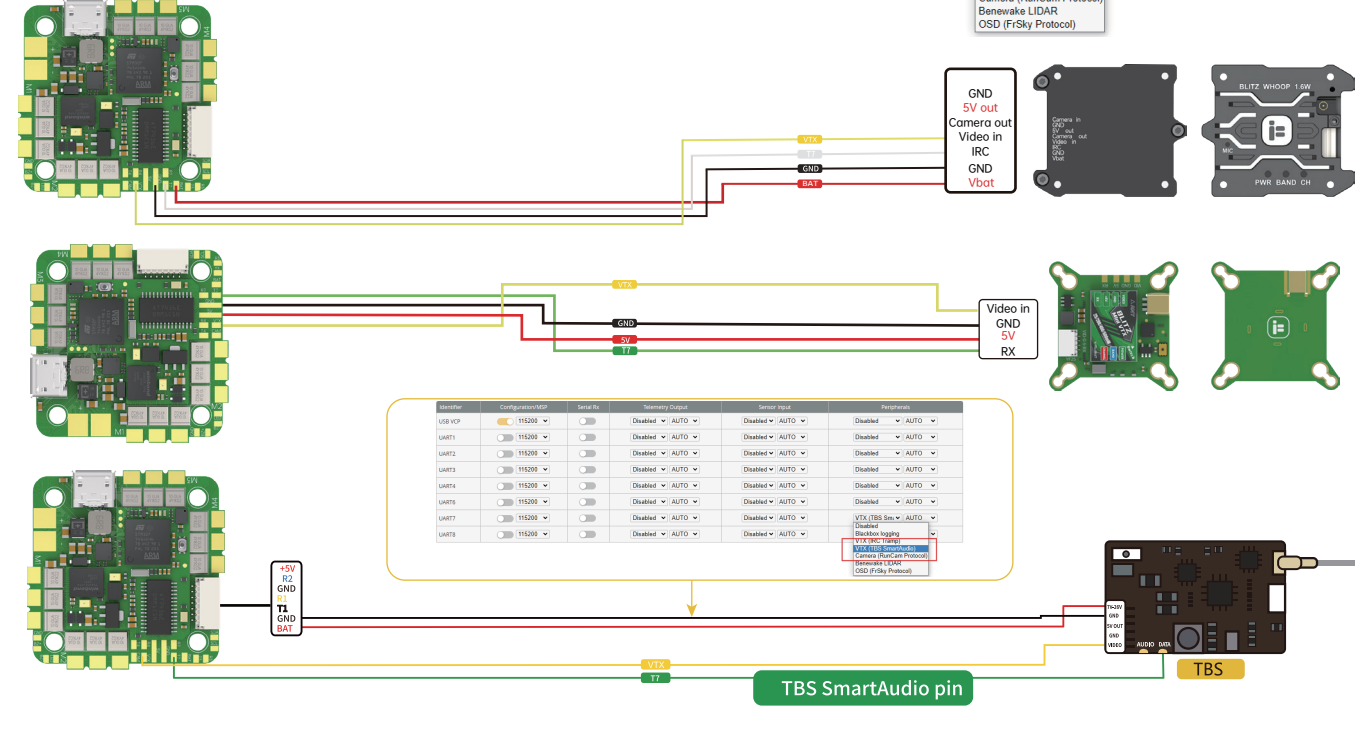
## Anti-Spark filter



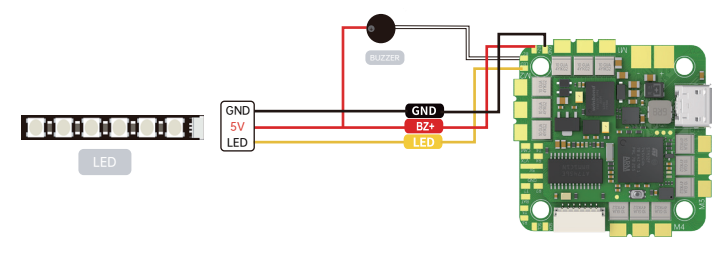
## Analog VTX



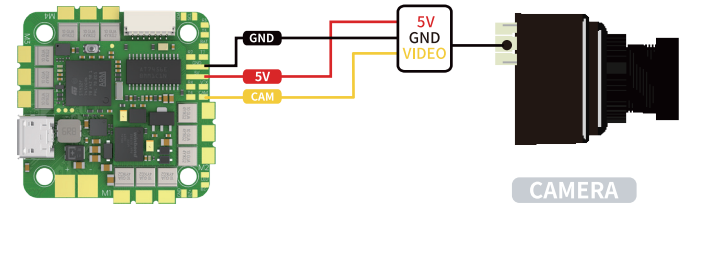
Identifier	Configuration/MSP	Serial Rx	Telemetry Output	Serial Input	Pin/pads
USB VCP	115200		Disabled / AUTO	Disabled / AUTO	Disabled / AUTO
UART1	115200		Disabled / AUTO	Disabled / AUTO	Disabled / AUTO
UART2	115200		Disabled / AUTO	Disabled / AUTO	Disabled / AUTO
UART3	115200		Disabled / AUTO	Disabled / AUTO	Disabled / AUTO
UART4	115200		Disabled / AUTO	Disabled / AUTO	Disabled / AUTO
UART5	115200		Disabled / AUTO	Disabled / AUTO	Disabled / AUTO
UART6	115200		Disabled / AUTO	Disabled / AUTO	Disabled / AUTO
UART7	115200		Disabled / AUTO	Disabled / AUTO	Disabled / AUTO
UART8	115200		Disabled / AUTO	Disabled / AUTO	Disabled / AUTO



## LED & Buzzer



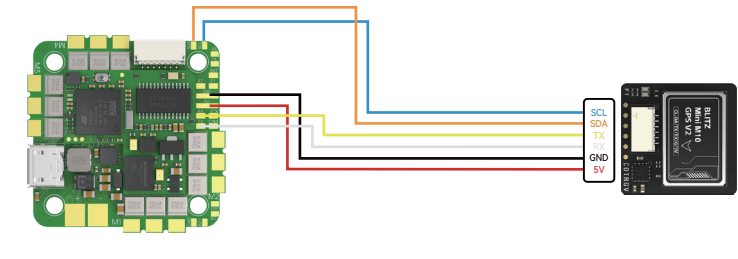
## CAM



## Status Indicator

- Start FC startup successful Blue LED is visible
- 3.3V 3.3V & MCU available Red LED is visible
- Bat Vbat is available Orange LED is visible
- 5V 5V output is available Green LED is visible

## GPS



Identifier	Configuration/MSP	Serial Rx	Telemetry Output	Serial Input	Pin/pads
USB VCP	115200		Disabled / AUTO	Disabled / AUTO	Disabled / AUTO
UART1	115200		Disabled / AUTO	Disabled / AUTO	Disabled / AUTO
UART2	115200		Disabled / AUTO	Disabled / AUTO	Disabled / AUTO
UART3	115200		Disabled / AUTO	Disabled / AUTO	Disabled / AUTO
UART4	115200		Disabled / AUTO	Disabled / AUTO	Disabled / AUTO
UART5	115200		Disabled / AUTO	Disabled / AUTO	Disabled / AUTO
UART6	115200		Disabled / AUTO	Disabled / AUTO	Disabled / AUTO
UART7	115200		Disabled / AUTO	Disabled / AUTO	Disabled / AUTO
UART8	115200		Disabled / AUTO	Disabled / AUTO	Disabled / AUTO

Identifier	Configuration/MSP	Serial Rx
USB VCP	115200	
UART1	115200	
UART2	115200	
UART3	115200	
UART4	115200	
UART5	115200	
UART6	115200	
UART7	115200	
UART8	115200	