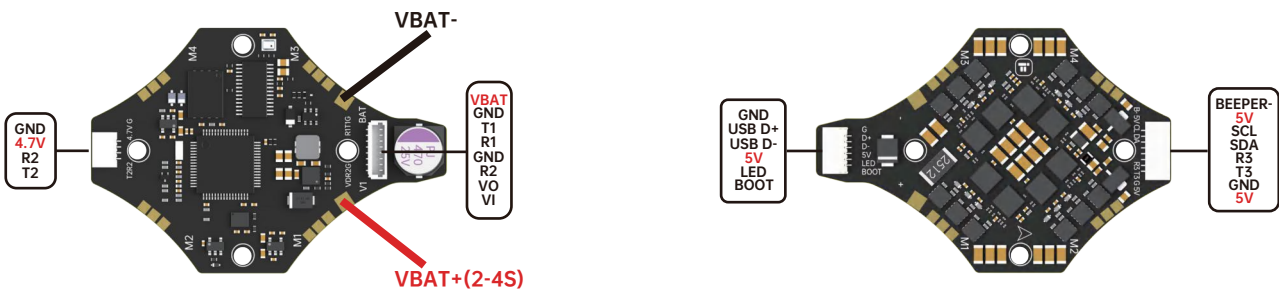
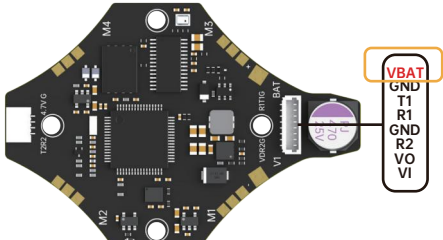


iFlight Defender 25 F7 AIO Wiring Diagram

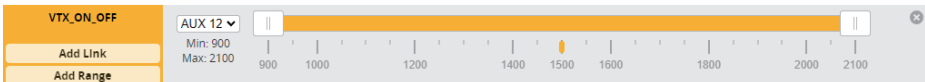


Notice

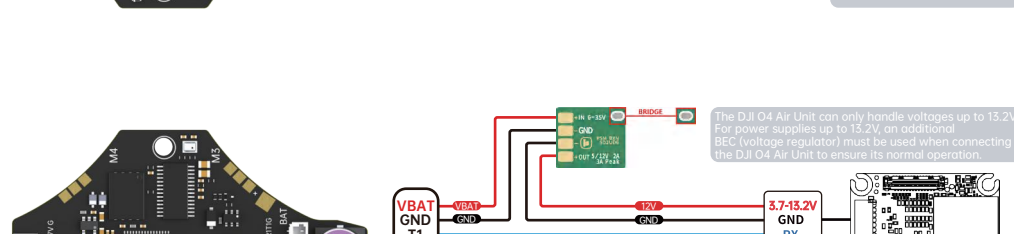
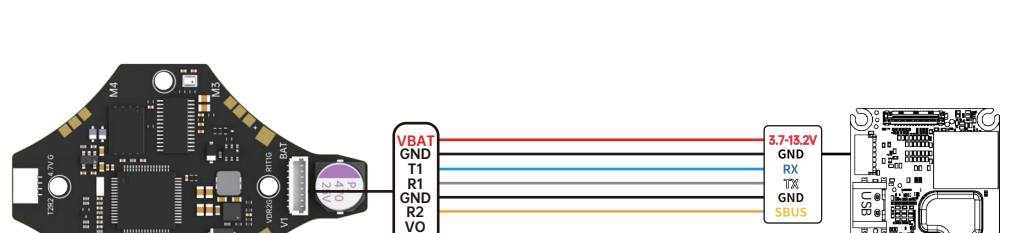
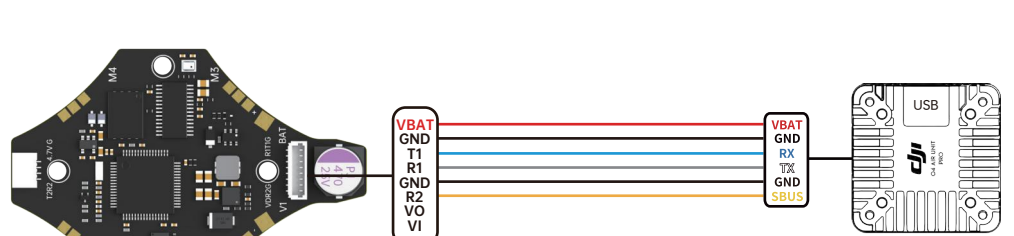
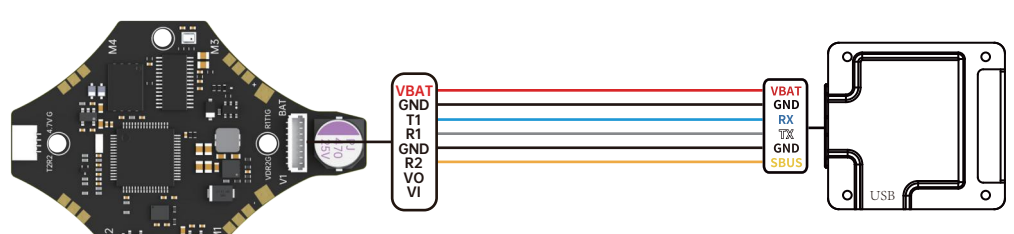
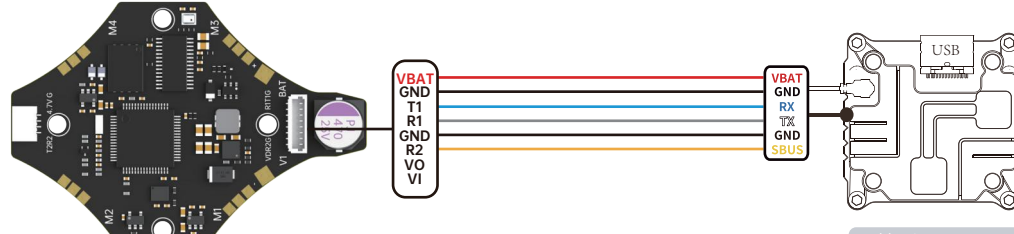
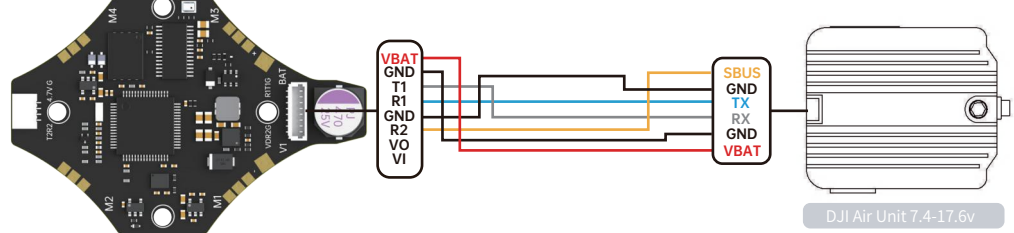
FC Firmware: iFLIGHT BLTUF 7.22.40.01



VBAT is a controllable output port. When the DJI Air Unit or any VTX is connected to VBAT, ensure that VTX ON/OFF is always enable in Betaflight (place the AUX in any idle one), and set the AUX channel corresponding to the remote control switch if you want the VTX power to be controllable.



DJI Digital transmitters



Identifier	Configuration/MSP	Serial Rx
USB VCP	<input checked="" type="checkbox"/> 115200	<input type="checkbox"/>
UART1	<input checked="" type="checkbox"/> 115200	<input type="checkbox"/>
UART2	<input checked="" type="checkbox"/> 115200	<input checked="" type="checkbox"/>
UART3	<input type="checkbox"/> 115200	<input type="checkbox"/>
UART4	<input type="checkbox"/> 115200	<input type="checkbox"/>
UART5	<input type="checkbox"/> 115200	<input type="checkbox"/>
UART6	<input type="checkbox"/> 115200	<input type="checkbox"/>

Receiver

Serial (via UART1) Receiver Mode

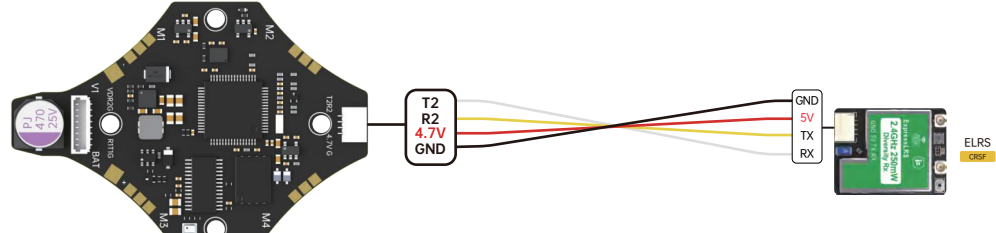
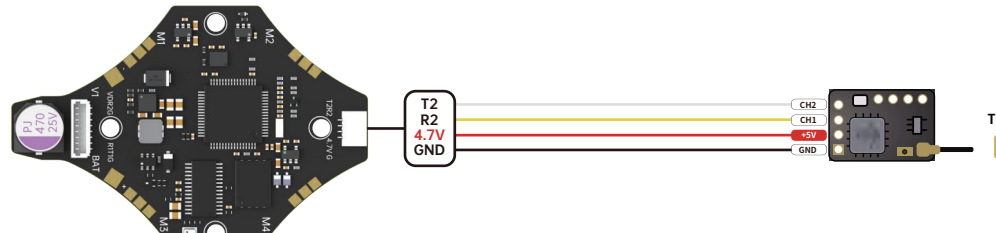
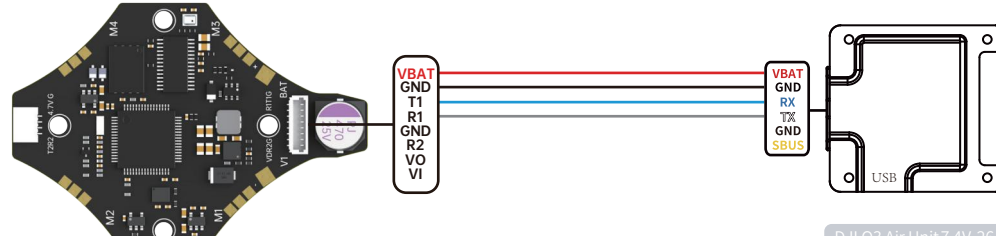
The UART for the receiver must be set to Serial Rx (in the Ports tab)

Select the correct data format from the drop-down, below

SBUS Serial Receiver Provider

- For DJI O3 Air Unit, in the Betaflight Configurator CLI, set osd device to MSP: "set osd displayport device = MSP" Specify the serial port of msp displayport as 0 (the number in this place should be the serial port number minus 1): "set displayport msp serial = 0" then type "save" and exit
- note: DJI FPV Remote Controller 2 is for DJI O3 Air Unit, DJI FPV Remote Controller 1 is for DJI Air Unit and Vista
- Please check your protocols, otherwise your DJI Radio won't input signals!
- DJI Goggle protocol and Betaflight protocol has to match!
- For lower signal latency use the SBUS_BAUD_FAST protocol option on both ends.
- For Betaflight Copy/Paste "set sbus_baud_fast=on" into your Betaflight Configurator CLI then hit enter. Use "save" and hit enter to save the changes. Default: sbus_baud_fast=off, Goggle protocol set to NORMAL

Any other receiver



Do not connect "SBUS" to the FC while using any other receiver

Identifier	Configuration/MSP	Serial Rx
USB VCP	<input checked="" type="checkbox"/> 115200	<input type="checkbox"/>
UART1	<input checked="" type="checkbox"/> 115200	<input type="checkbox"/>
UART2	<input checked="" type="checkbox"/> 115200	<input type="checkbox"/>
UART3	<input type="checkbox"/> 115200	<input type="checkbox"/>
UART4	<input type="checkbox"/> 115200	<input type="checkbox"/>
UART5	<input type="checkbox"/> 115200	<input type="checkbox"/>
UART6	<input type="checkbox"/> 115200	<input type="checkbox"/>

Receiver

Serial (via UART1) Receiver Mode

The UART for the receiver must be set to Serial Rx (in the Ports tab)

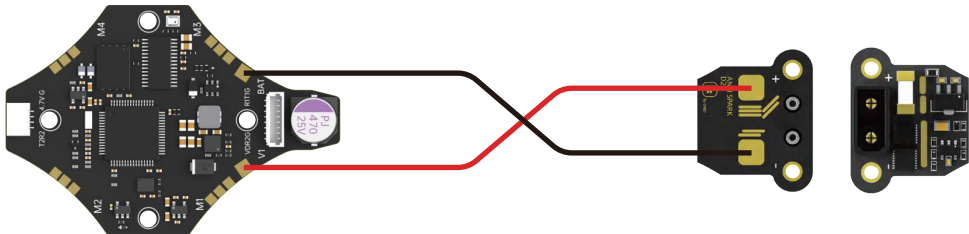
Select the correct data format from the drop-down, below

CRSF Serial Receiver Provider

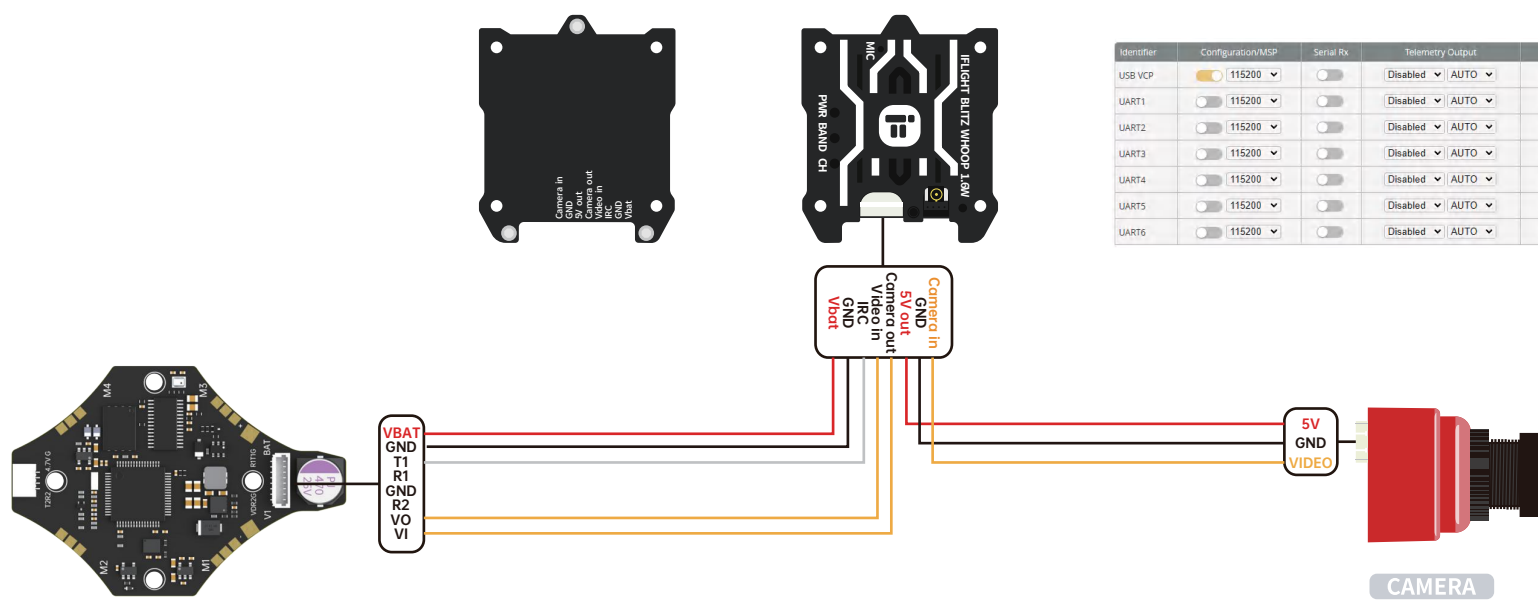
Telemetry

☒ TELEMETRY Telemetry output

Anti-Spark filter

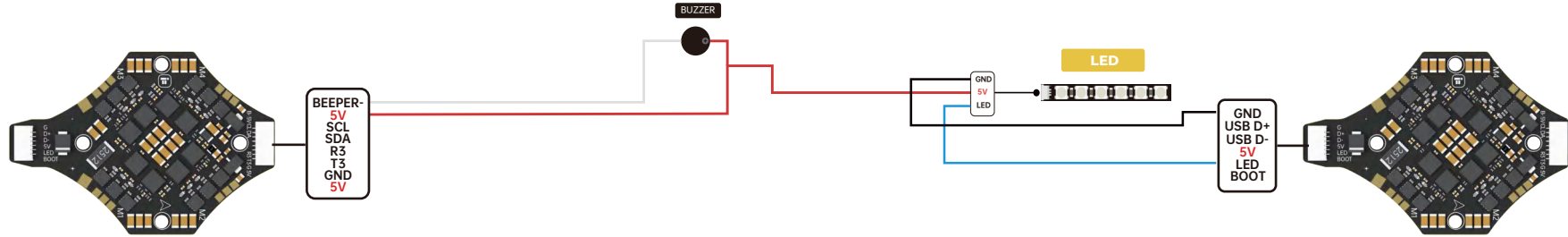


VTX & CAMERA

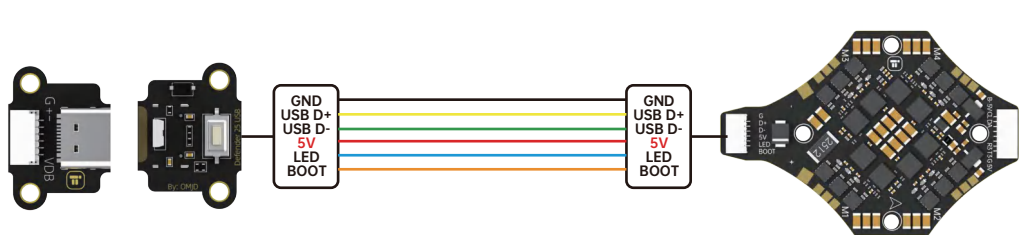


Identifier	Configuration	Serial Rx	Telemetry Output	Serial Input	Peripherals
USB VCP	<input checked="" type="checkbox"/> 115200	<input type="checkbox"/>	Disabled	AUTO	Disabled
UART1	<input type="checkbox"/> 115200	<input type="checkbox"/>	Disabled	AUTO	Disabled
UART2	<input type="checkbox"/> 115200	<input type="checkbox"/>	Disabled	AUTO	Disabled
UART3	<input type="checkbox"/> 115200	<input type="checkbox"/>	Disabled	AUTO	Disabled
UART4	<input type="checkbox"/> 115200	<input type="checkbox"/>	Disabled	AUTO	Disabled
UART5	<input type="checkbox"/> 115200	<input type="checkbox"/>	Disabled	AUTO	Disabled
UART6	<input type="checkbox"/> 115200	<input type="checkbox"/>	Disabled	AUTO	Disabled

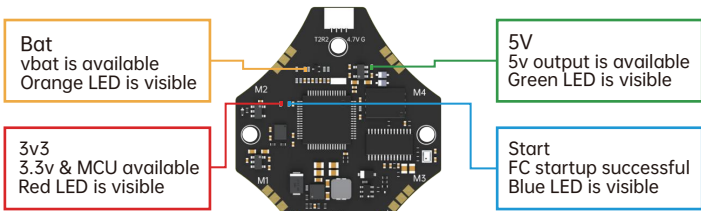
LED



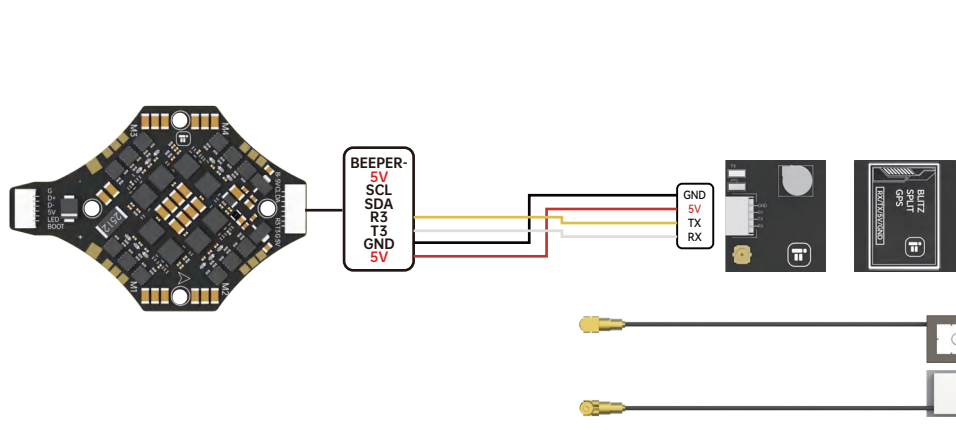
USB



Status indicator



GPS



Setup	Ports	Configuration	Battery	PD Tuning	Recover	Modes	Micros	OSD	Blackbox	CLI
GPS	<input checked="" type="checkbox"/>	GPS for navigation and telemetry								
Note: Remember to configure a Serial Port (via Ports tab) when using GPS feature.										
UBLOX	<input checked="" type="checkbox"/>	Protocol								
<input type="checkbox"/>	Auto Baud									
<input type="checkbox"/>	Auto Config									
<input type="checkbox"/>	Use Galileo									
<input type="checkbox"/>	Set Home Point Once									
<input type="checkbox"/>	Auto-detect									
<input type="checkbox"/>	Ground Assistance Type									

Identifier	Configuration/MSP	Serial Rx	Telemetry Output	Serial Input	Peripherals
USB VCP	<input checked="" type="checkbox"/> 115200	<input type="checkbox"/>	Disabled	AUTO	Disabled
UART1	<input type="checkbox"/> 115200	<input type="checkbox"/>	Disabled	AUTO	Disabled
UART2	<input type="checkbox"/> 115200	<input type="checkbox"/>	Disabled	AUTO	Disabled
UART3	<input type="checkbox"/> 115200	<input type="checkbox"/>	Disabled	AUTO	Disabled
UART4	<input type="checkbox"/> 115200	<input type="checkbox"/>	Disabled	AUTO	Disabled
UART5	<input type="checkbox"/> 115200	<input type="checkbox"/>	Disabled	AUTO	Disabled
UART6	<input type="checkbox"/> 115200	<input type="checkbox"/>	Disabled	AUTO	Disabled