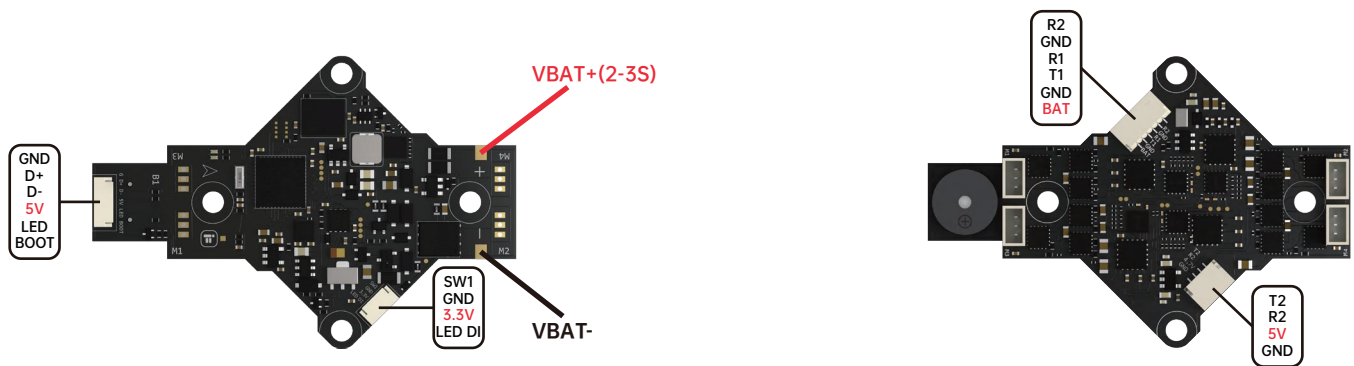
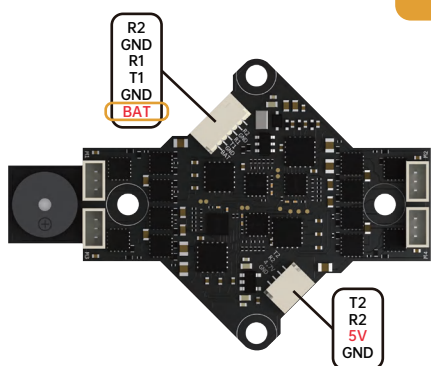


Defender 16/20 F411 AIO Wiring Diagram

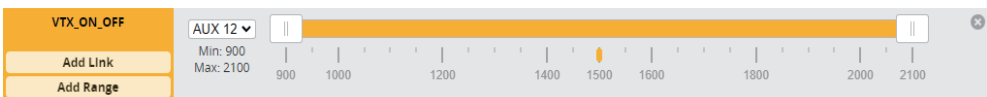


Notice

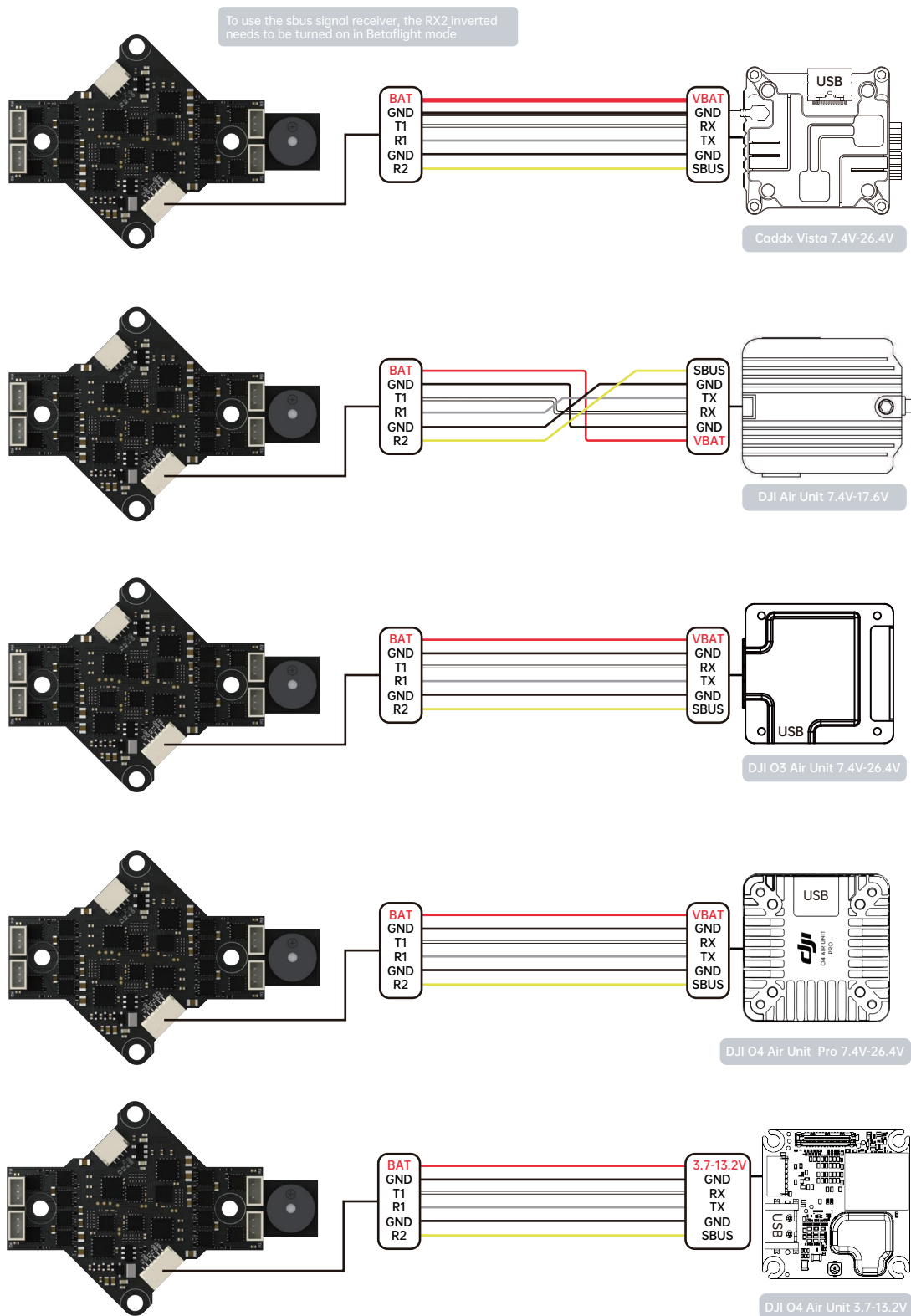
FC Firmware : IFLIGHT DEFENDER F411
ESC Firmware : Q-H-50 - Bluejay, 0.16



BAT is a controllable output port. When the DJI Air Unit or any VTX is connected to BAT, ensure that VTX ON OFF is always enable in Betaflight (place the AUX in any idle one), and set the AUX channel corresponding to the remote control switch if you wanna the VTX power to be controllable.



DJI Digital transmitters



Receiver	Configuration/MSP	Serial Rx	Telemetry Output	Sensor Input	Peripherals
USB VCP	115200	Disabled	AUTO	Disabled	AUTO
UART1	115200	Disabled	AUTO	Disabled	AUTO
UART2	115200	Disabled	AUTO	Disabled	AUTO

Receiver

Serial (via UART1) Receiver Mode

The UART for the receiver must be set to 'Serial Rx' (in the Ports tab)

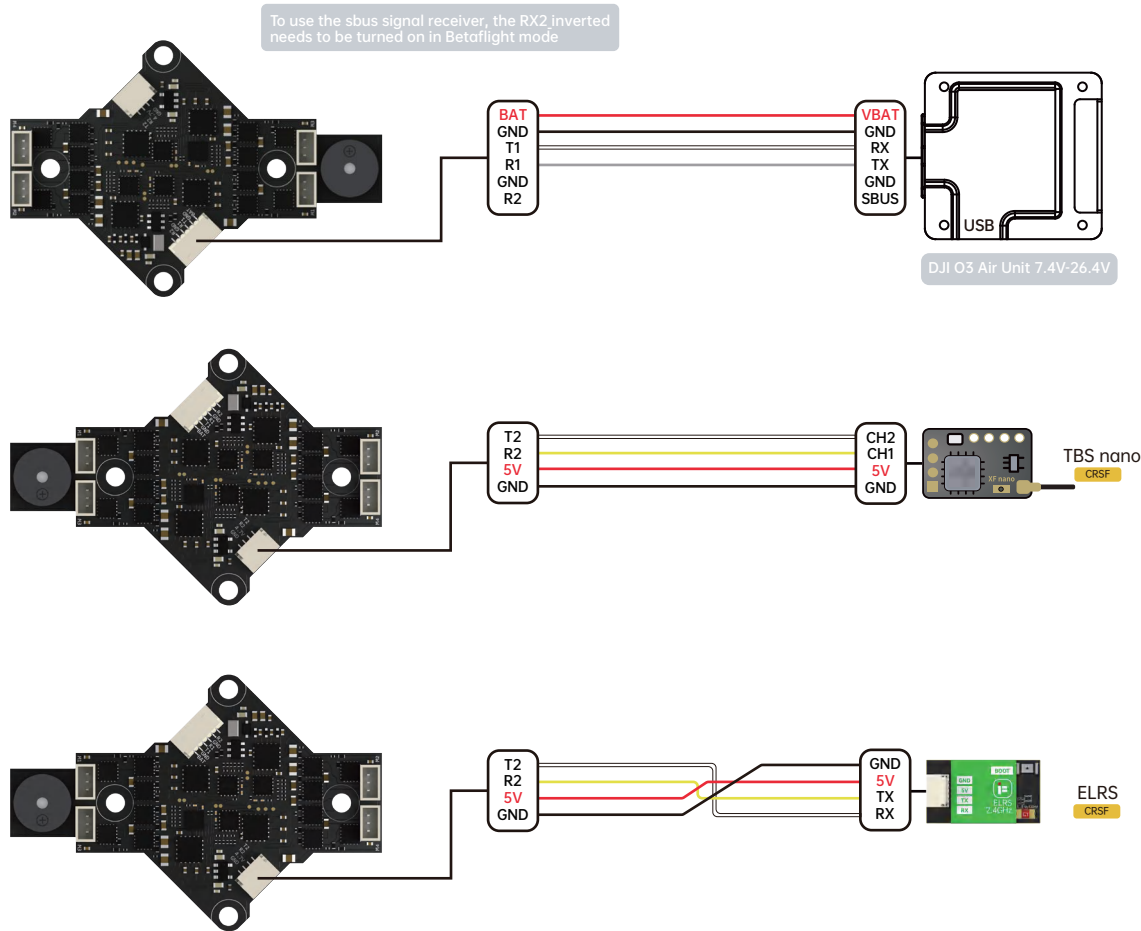
Select the correct data format from the drop-down, below:

CRSF

Serial Receiver Provider

- To enable the air unit OSD under Betaflight 4.4 version, you need to select VTX (MSP+Displayport) in the peripheral port where the air unit signal is connected to the port interface.
- note: DJI FPV Remote Controller2 is for DJI O3 Air Unit
DJI FPV Remote Controller is for DJI Air Unit and Vista
- Please check your protocols, otherwise your DJI Radio won't input signals!
DJI Goggle protocol and Betaflight protocol has to match!
For lower signal latency use the SBUS BAUD.FAST protocol option on both ends.
- For Betaflight Copy Paste"set sbus_baud_fast=on"into your Betaflight Configurator CLI then hit enter.
Use "save" and hit enter to save the changes.
Default: sbus_baud_fast=off, Goggle protocol set to NORMAL

Any other receiver



Receiver	Configuration/MSP	Serial Rx	Telemetry Output	Sensor Input	Peripherals
USB VCP	115200	Disabled	AUTO	Disabled	AUTO
UART1	115200	Disabled	AUTO	Disabled	AUTO
UART2	115200	Disabled	AUTO	Disabled	AUTO

Do not connect "SBUS" to the FC while using any other receiver

Receiver

Serial (via UART1) Receiver Mode

The UART for the receiver must be set to 'Serial Rx' (in the Ports tab)

Select the correct data format from the drop-down, below:

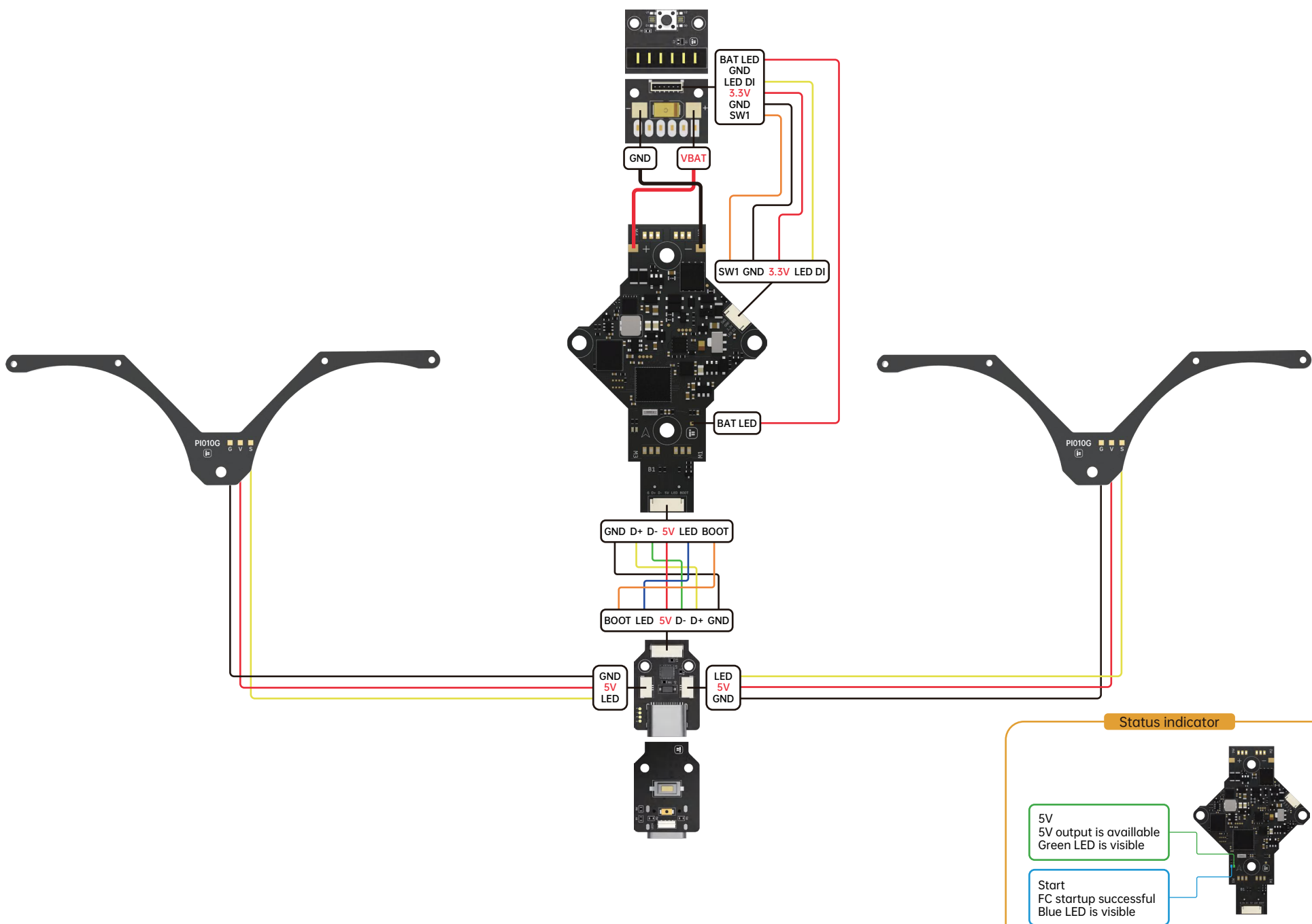
CRSF

Serial Receiver Provider

Telemetry

TELEMETRY Telemetry output

Wiring diagram overview



Motors

