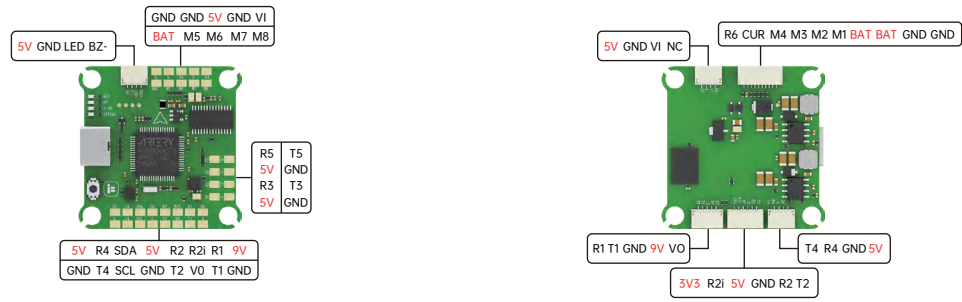
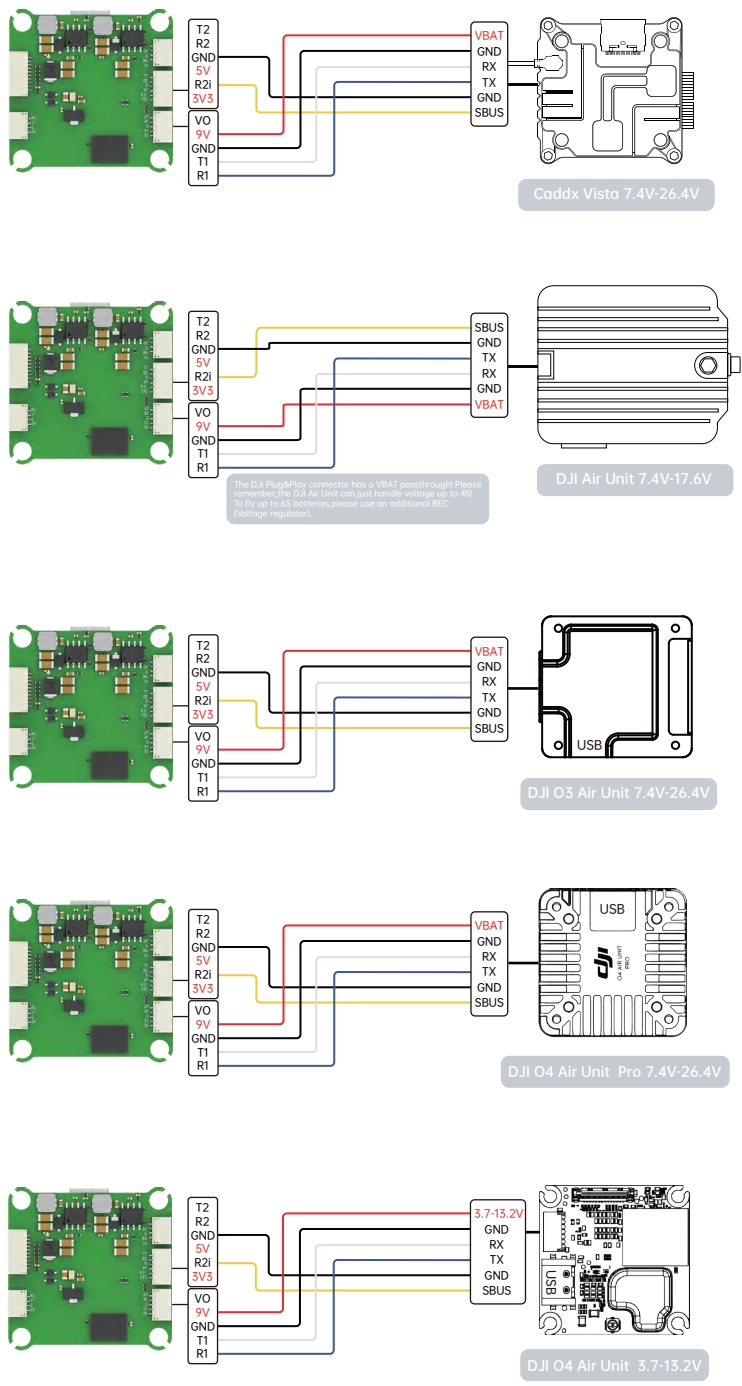


iFlight BLITZ ATF435 Wiring Diagram



DJI Digital Transmitters



Identifier	Configuration/MSP	Serial Rx	Telemetry Output	Sensor Input	Peripherals
UART1	115200	Disabled	Disabled	Disabled	Disabled
UART2	115200	Disabled	Disabled	Disabled	Disabled
UART3	115200	Disabled	Disabled	Disabled	Disabled
UART4	115200	Disabled	Disabled	Disabled	Disabled
UART5	115200	Disabled	Disabled	Disabled	Disabled
UART6	115200	Disabled	Disabled	Disabled	Disabled

Receiver

Serial (via UART) Receiver Mode

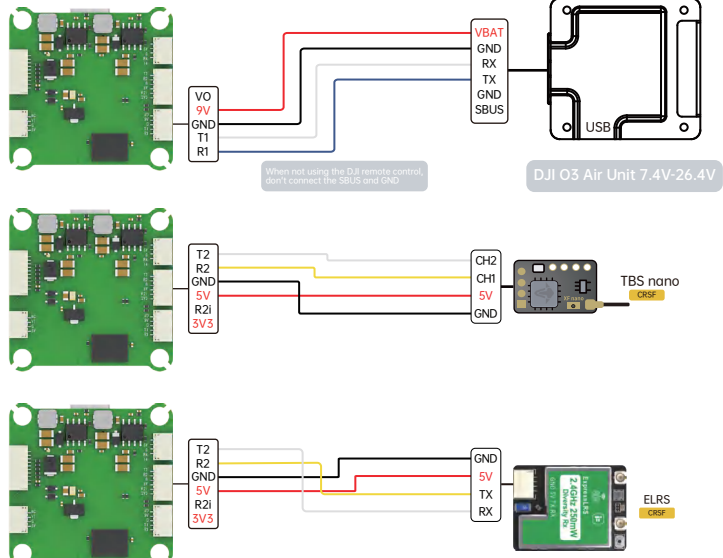
The UART for the receiver must be set to Serial Rx (in the Ports tab)

Select the correct data format from the drop-down, below:

SBUS Serial Receiver Provider

- To enable the air unit OSD under Betaflight 4.4 version, you need to select VTX (MSP+Displayport) in the peripheral port where the air unit signal is connected to the port interface.
- note: DJI FPV Remote Controller2 is for DJI O3 Air Unit
DJI FPV Remote Controller is for DJI Air Unit and Vista
- Please check your protocols, otherwise your DJI Radio won't input signals!
DJI Goggle protocol and Betaflight protocol has to match!
For lower signallatency use the SBUS BAUD_FAST protocol option on both ends.
- For Betaflight 4.4 "set sbus_baud_fast=on" into your Betaflight Configurator CLI then hit enter.
Use "save" and hit enter to save the changes.
Default: sbus_baud_fast=off, Goggle protocol set to NORMAL

Any other Receiver



Identifier	Configuration/MSP	Serial Rx	Telemetry Output	Sensor Input	Peripherals
UART1	115200	Disabled	Disabled	Disabled	Disabled
UART2	115200	Disabled	Disabled	Disabled	Disabled
UART3	115200	Disabled	Disabled	Disabled	Disabled
UART4	115200	Disabled	Disabled	Disabled	Disabled
UART5	115200	Disabled	Disabled	Disabled	Disabled
UART6	115200	Disabled	Disabled	Disabled	Disabled

Receiver

Serial (via UART) Receiver Mode

The UART for the receiver must be set to Serial Rx (in the Ports tab)

Select the correct data format from the drop-down, below:

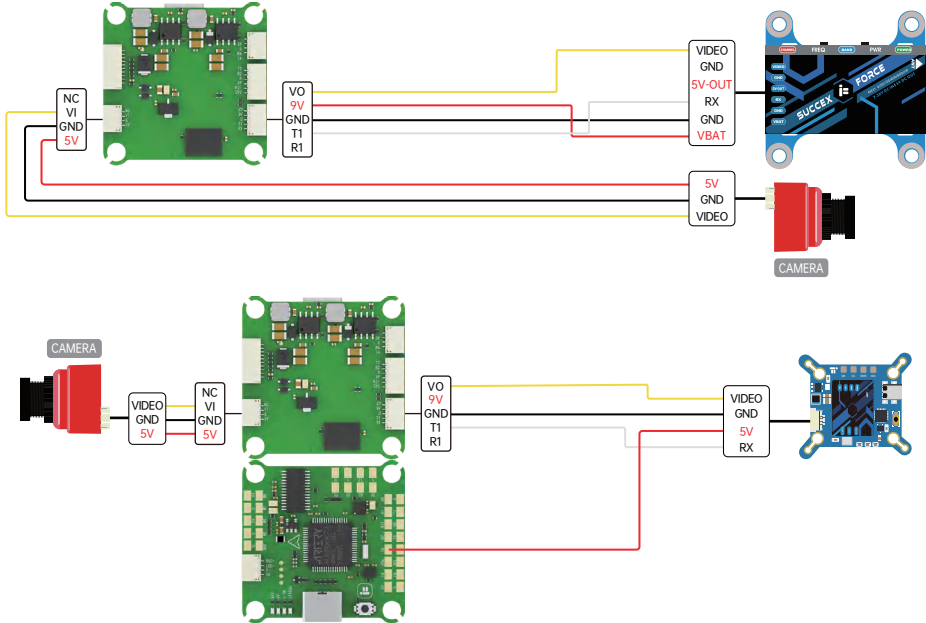
CRSF Serial Receiver Provider

Telemetry

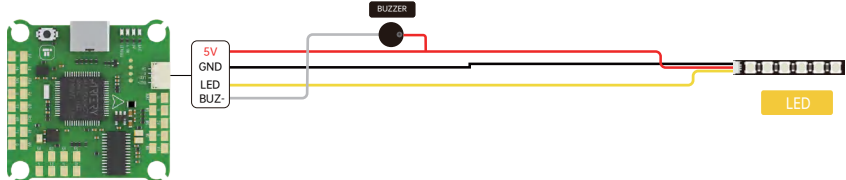
TELEMETRY Telemetry output

VTX/CAM

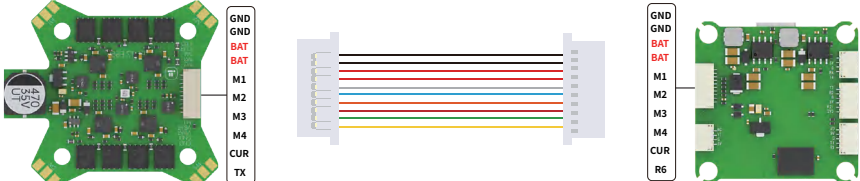
Identifier	Configuration/MSP	Serial Rx	Telemetry Output	Sensor Input	Peripherals
UART1	115200	Disabled	Disabled	Disabled	Disabled
UART2	115200	Disabled	Disabled	Disabled	Disabled
UART3	115200	Disabled	Disabled	Disabled	Disabled
UART4	115200	Disabled	Disabled	Disabled	Disabled
UART5	115200	Disabled	Disabled	Disabled	Disabled
UART6	115200	Disabled	Disabled	Disabled	Disabled



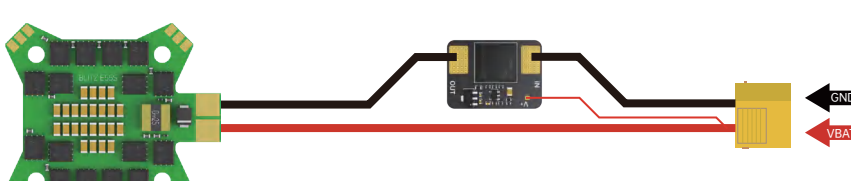
LED/BUZZER



ESC

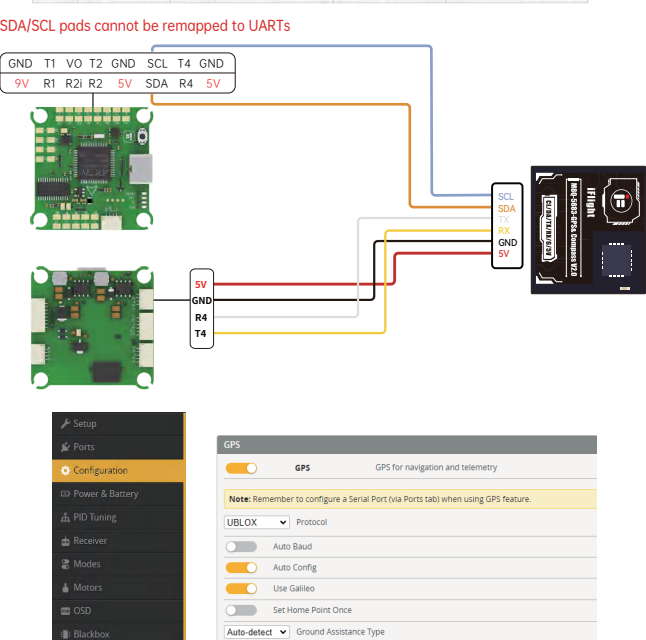


Anti-Spark filter

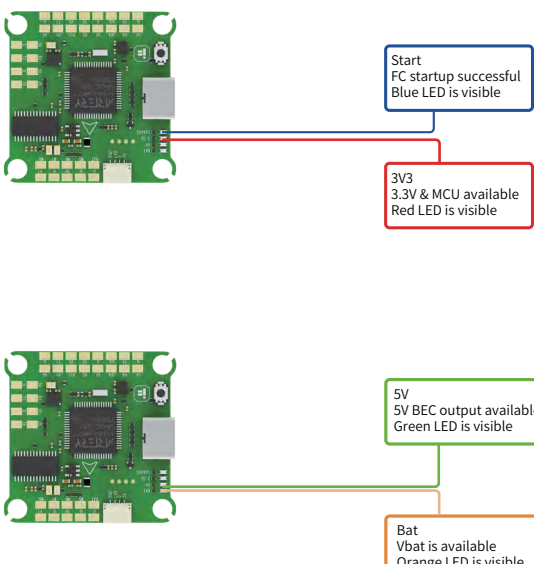


GPS

Identifier	Configuration/MSP	Serial Rx	Telemetry Output	Sensor Input	Peripherals
UART1	115200	Disabled	Disabled	Disabled	Disabled
UART2	115200	Disabled	Disabled	Disabled	Disabled
UART3	115200	Disabled	Disabled	Disabled	Disabled
UART4	115200	Disabled	Disabled	Disabled	Disabled
UART5	115200	Disabled	Disabled	Disabled	Disabled
UART6	115200	Disabled	Disabled	Disabled	Disabled



Status indicator



Note: Each LED indicates the status of your flight controller.