

HELION O4 Pro

机架组装示意图
Frame Assembly Guide

1. 底板
Bottom plate

2. 中板
Counter plate

3. 侧板
Side plate

4. 机臂A
arm A

5. 机臂B
arm B

6. 摄像头侧板CNC
CNC Camera side plate

7. 侧板固定件A CNC
CNC Side panels fixed mount A

8. 侧板固定件B CNC
CNC Side panels fixed mount B

9. 可调节脚座底座打印件
GoPro bottom stand TPU

10. 摄像头硅胶侧板
Camera vibration dampers silicone

11. 前保护板打印件
Front bumper TPU

12. 图传天线座打印件
Antenna mount TPU

13. T 型天线座A打印件
T-type antenna mount TPU A

14. XT90固定座打印件
XT90 plug mount TPU

15. 外壳+LED灯 (已安装)
Canopy with LED (Assembled)

16. M3*23圆形网纹铝柱
M3*23 Al. standoff

17. M3*48内六角螺丝
M3*48 hex screw

18. M3*22内六角螺丝
M3*22 hex screw

19. M3*11内六角螺丝
M3*11 hex screw

20. M3*6内六角螺丝
M3*6 hex screw

21. M3*24沉头内六角螺丝
M3*24 countersunk hex screw

22. M3*19沉头内六角螺丝
M3*19 countersunk hex screw

23. M3*16沉头内六角螺丝
M3*16 countersunk hex screw

24. 2.7*4*2 双通尼龙柱
2.7*4*2 Dual-pass nylon standoff

25. M3*8沉头内六角螺丝
M3*8 countersunk hex screw

26. 2.7*4*4 双通尼龙柱
2.7*4*4 Dual-pass nylon standoff
27. M2*6内六角螺丝
M2*6 hex screw

28. M2*7内六角螺丝
M2*7 hex screw

29. M2*8内六角自攻螺丝
M2*8 self-tapping hex screw

30. M2*10沉头内六角螺丝
M2*10 countersunk hex screw

31. M3防松自紧螺母
M3 lock nut

32. M3螺母
M3 nut

33. BEC 电源模块
BEC Module

附赠
Additional parts

1. 集线管
Motor wire protector

2. 格纹硅胶电池防滑垫
Battery pad

3. 内六角扳手
Allen wrench

4. M5*20 内六角螺丝
M5*20 hex screw

5. M5法兰螺母
M5 nut

6. 通用贴纸V4
Sticker V4

7. 20*300 超纤皮电池扎带
20*300 Battery strap

8. T 型天线座B打印件
T-type antenna mount TPU B

9. 双Type-C 转接线
Dual type-c adapter cable

10. 接收机座打印件
Receiver mount TPU

11. 飞控隔板打印件
FC spacer mount TPUv

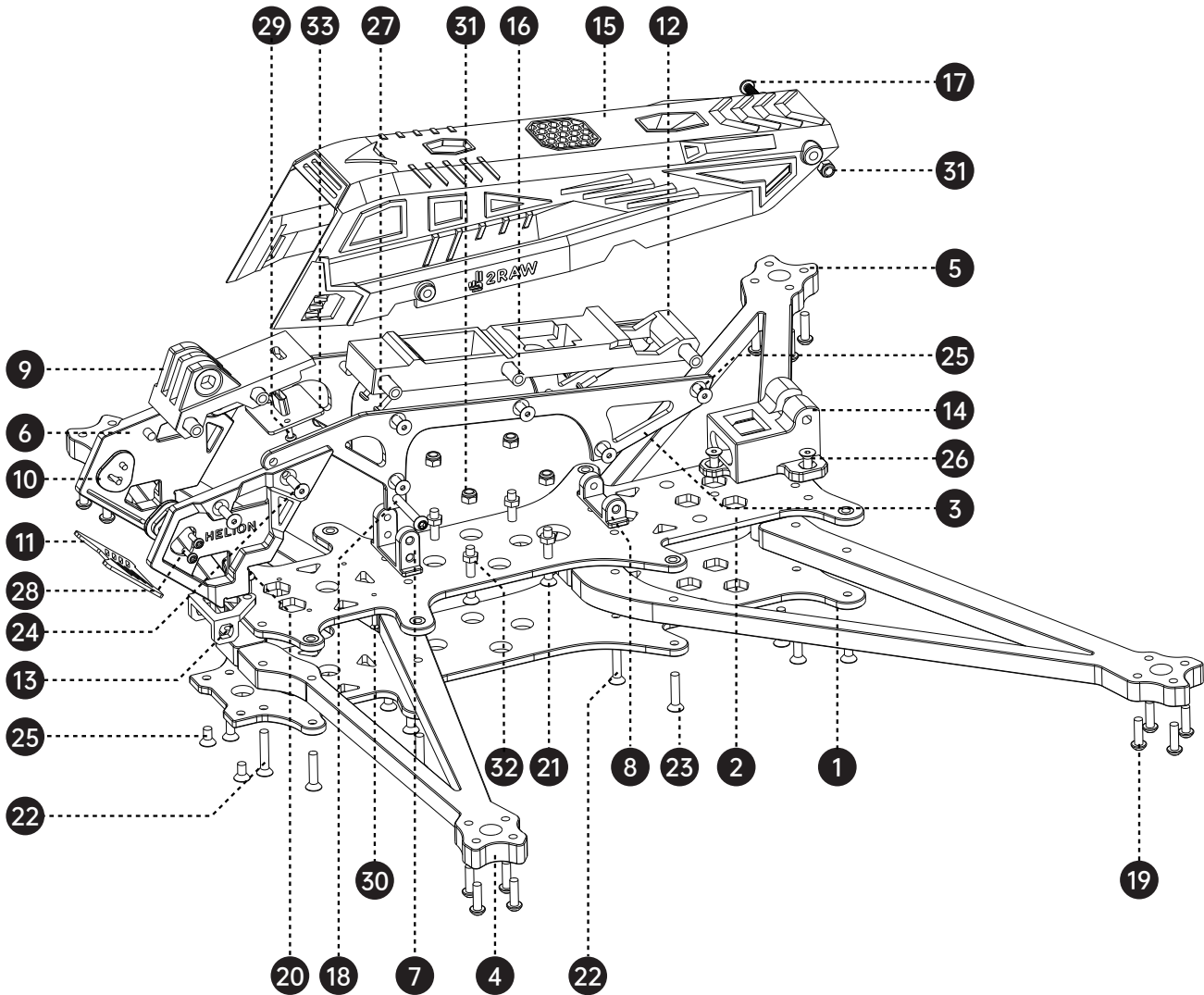
12. IPEX直头转SMA直头内针转接线
IPEX to RP-SMA F Adapter Cable

13. 避震橡胶O型圈
Rubber Damper Ball O-Ring

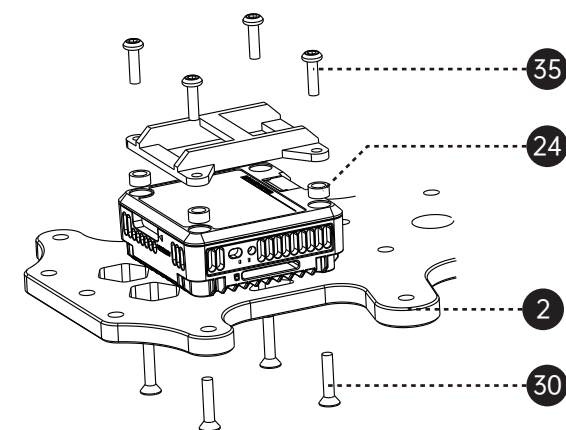
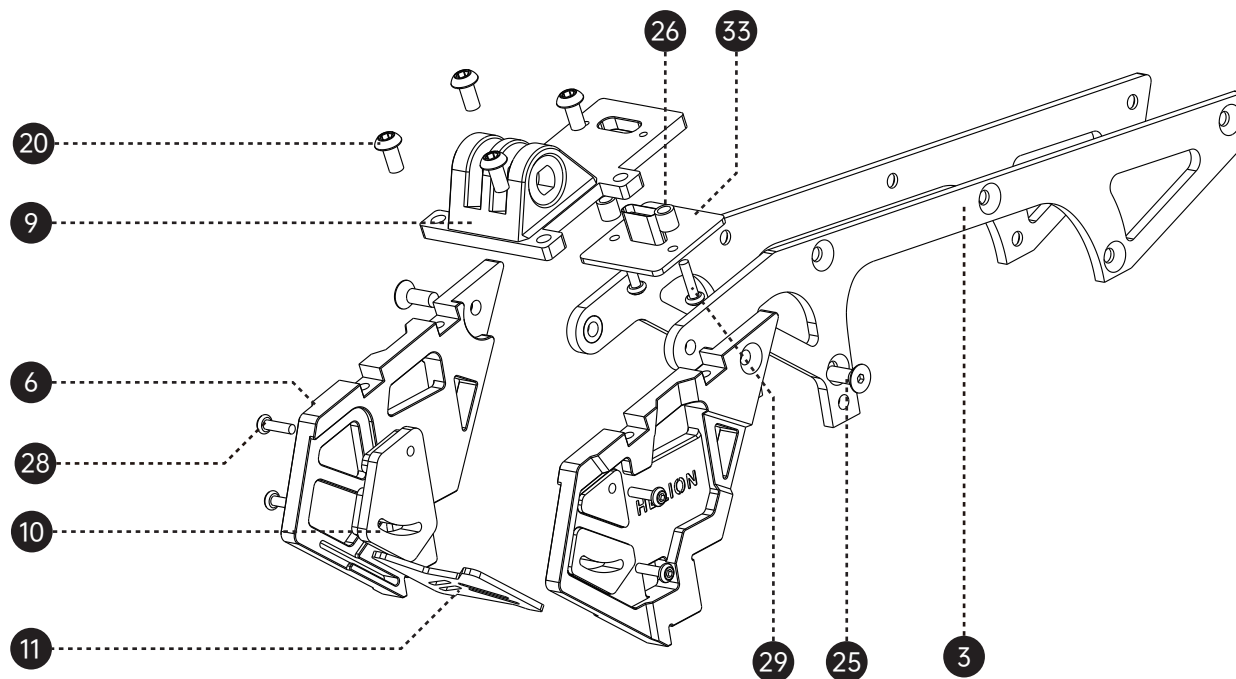
14. XT90H-M 插头 带线#10 103mm
XT90H-M Connector #10 Wire 103mm

15. 自锁尼龙扎带 3*100
Self-Locking Nylon Zip Tie (3*100mm)

16. SH1.0 2P 单头端子线 115mm
SH1.0 2P Terminal Cable 115mm



DJI O4版本安装示意图
DJI O4 Version Assembly diagram



DJI O4天空端&接收机座安装示意图
DJI O4 Air Unit & Receiver Assembly diagram

DJI O3版本使用此CNC&硅胶侧板&可调节狗座底座打印件&M2*5螺丝&M3*8沉头螺丝&前保护板打印件
DJI O3 version use this CNC & Silicone camera side plate & Adjustable TPU GoPro mount & M2*5 screws & M3*8 countersunk screws & TPU front protection plate

