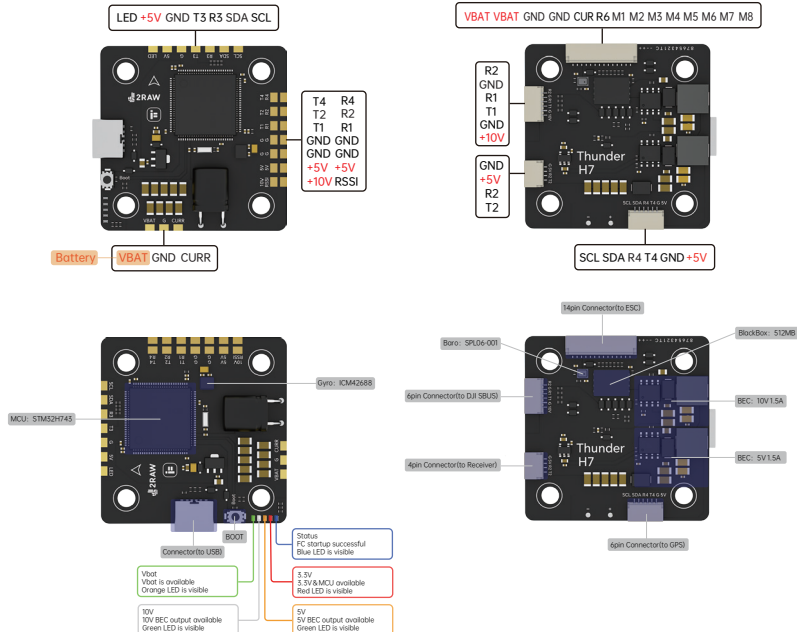


iFlight Thunder H7 Instructions

Parameters:

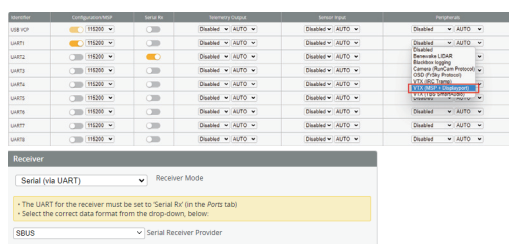
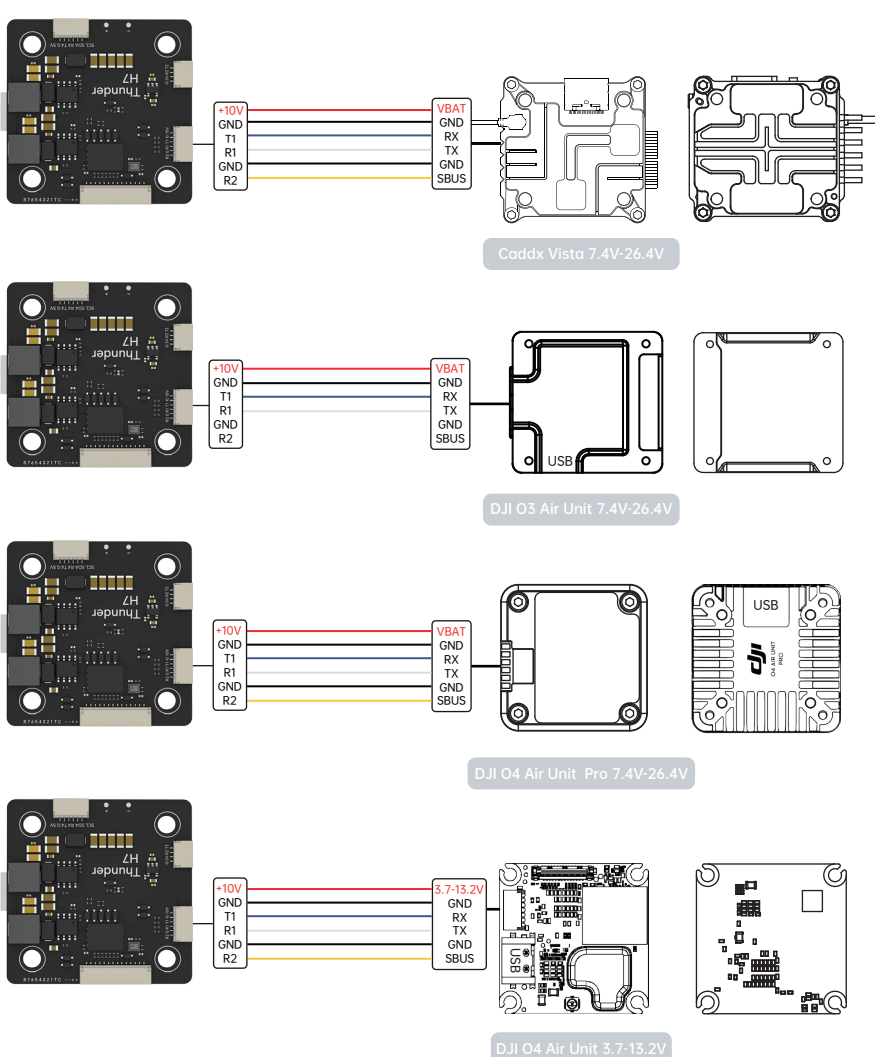
MCU: STM32H743
 Gyro: ICM42688
 Baro: SPL06-001
 OSD Chip: Not support analog OSD, only supports HD UART transmission OSD
 I2BEC: Output 5V 1.5A continuous output current, 2A peak current (120 seconds)
 I2BEC: Output 10V 1.5A continuous output current, 2A peak current (120 seconds)
 BlockBox: 512MB
 UART: 4*UART(UART1, UART2, UART3, UART4, UART6)
 UART1 for VTX HD
 UART2 for Receiver
 UART3 for other devices that require serial ports
 UART4 for GPS
 UART6 for ESC Telemetry
 8*Shot/PWM outputs
 1*I2C
 1xSH1.0 14pin connector for ESC (Vbat/Vbat(G)/Cur/R6/M1/M2/M3/M4/M5/M6/M7/M8)
 1xSH1.0 6pin connector for DJI (R2/G/R1/T1/G/D/V)
 1xSH1.0 6pin connector for GPS (SCL/SDA/R4/T4/G/5V)
 1xSH1.0 4pin connector for Receiver (G/5V/R2/T2)
 5*0402 LEDs for FC STATUS (Start Blue) / (3.3V Red) / (10V White) / (BAT Green)
 WS2812 ledStrip: Yes
 Beep: NO
 Dimensions: 42*42mm
 Mount pattern: 30.5*30.5mm*4
 Weight: 14g

Firmware:
 Betaflight: 2RAW_THUNDER.H7
 INAV: 2RAW_THUNDER.H7



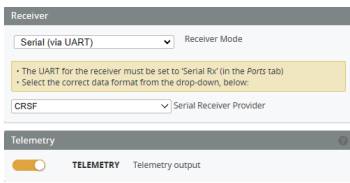
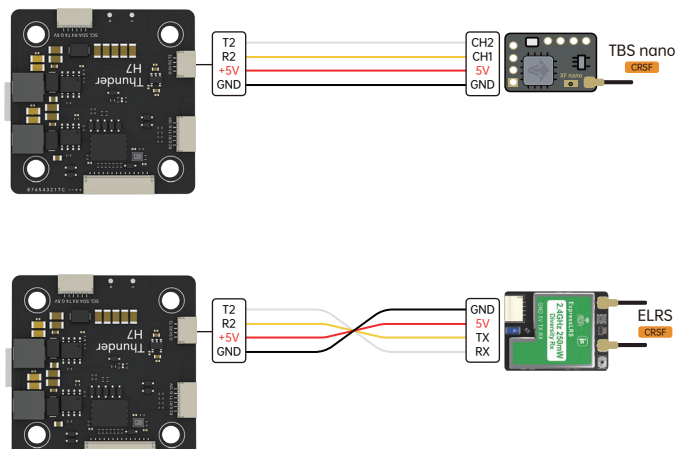
DJI Digital Transmitters: SUBS Protocol

Firmware Target: 2RAW_THUNDER.H7

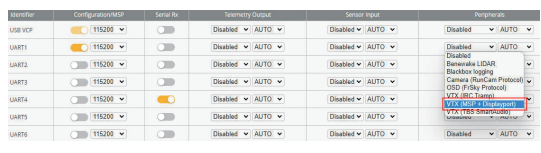
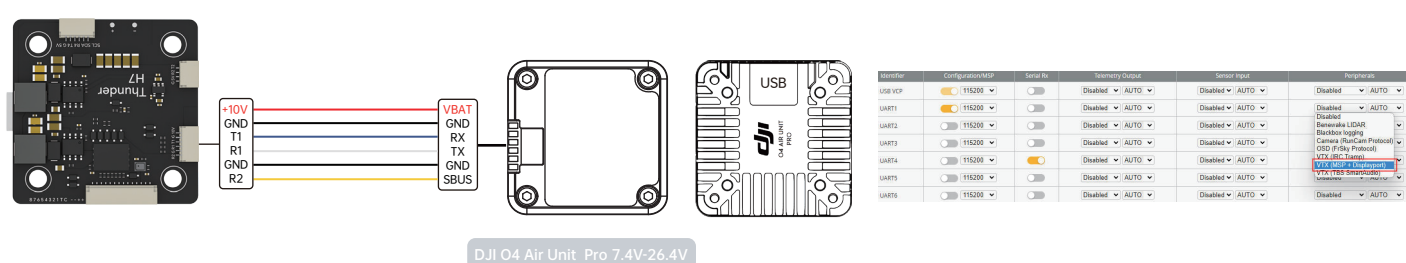


- To enable the air unit OSD under Betaflight 4.4 version, you need to select VTX (MSP+Displayport) in the peripheral port where the air unit signal is connected to the port interface.
- Please check your protocols, otherwise your DJI Radio won't input signals!
 DJI Goggle protocol and Betaflight protocol has to match!
 For lower signal latency use the SBUS BAUD_FAST protocol option on both ends.
- For Betaflight Copy Paste "set sbus_baud_fast=on" into your Betaflight Configurator CLI then hit enter.
 Use "save" and hit enter to save the changes.
 Default: sbus_baud_fast=off, Goggle protocol set to NORMAL

Others Receivers(TBS/ELRS): CRSF Protocol



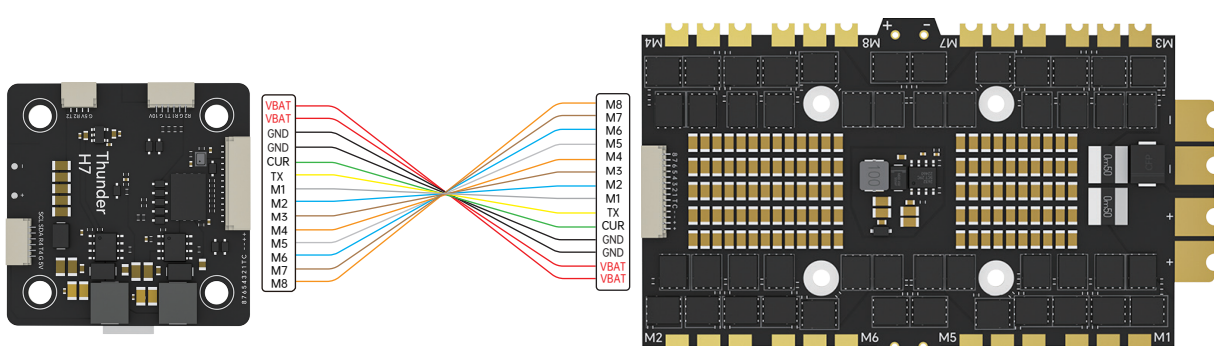
VTX



LED

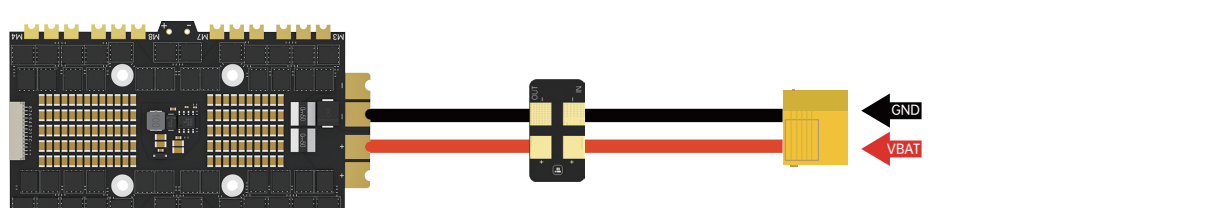


ESC

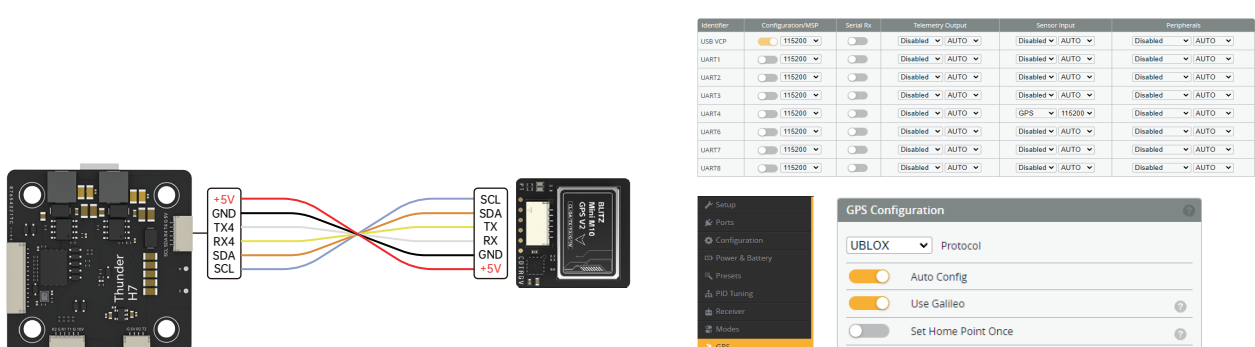


Note: If not using iFlight electronics, please make sure the plug pinout is identical or the wire harness needs to be reordered.

Anti-Spark filter



GPS



SDA/SCL pads can not be remapped to UARTs

Dimensions/Mounting pattern

