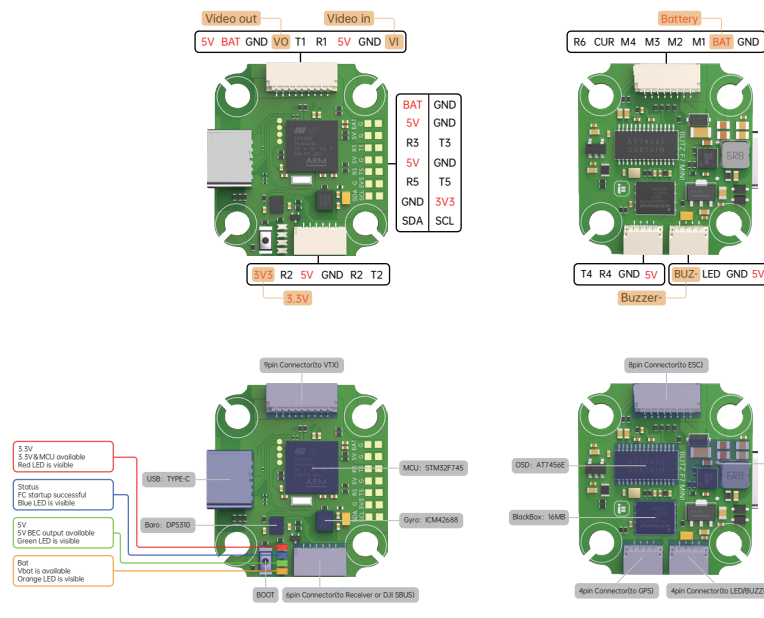


iFlight BLITZ MINI F745 Instructions

Parameters:

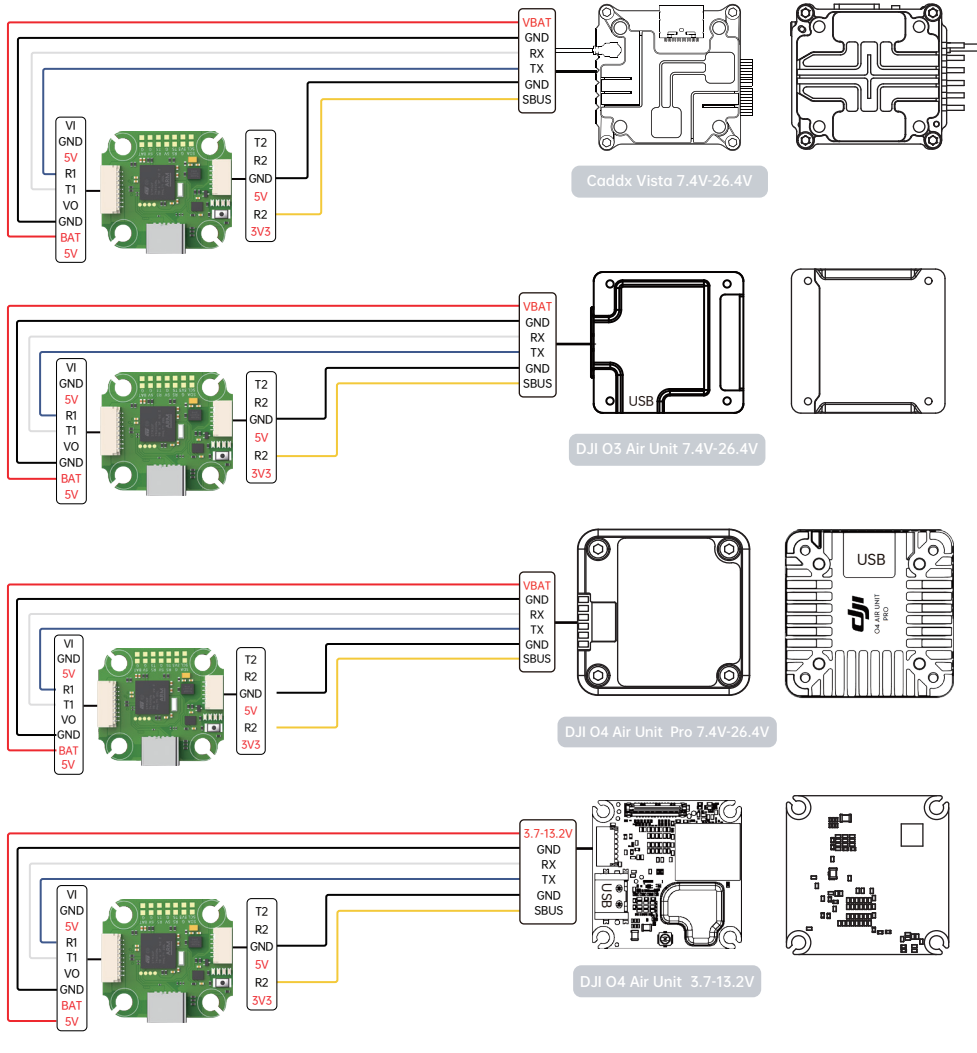
MCU: STM32F745
 Gyro: ICM42688
 Baro: DP5310
 OSD: AT7456E
 BEC: Output 5V 2.5A continuous output current, 3A peak current (15 seconds)
 BlackBox: 16MB
 Uart: 6*UART(UART1, UART2, UART3, UART4, UART5, UART6)
 UART2 for VTX HD/Analog
 UART3 for Receiver
 UART5, UART4, UART5 for GPS or Other devices that require serial ports
 UART6 for ESC Telemetry
 4-Dshot/PWM outputs
 1xI2C
 1xSH1.0 9pin connector for HD VTX/Analog VTX&CAM (5VBAT/GND/T1/R1/SV/GV/M)
 1xSH1.0 8pin connector for ESC (R6/CUR/M4/M5/M2/M1/BAT/G)
 1xSH1.0 6pin connector for Any Receiver or DJI (SV/R2/SV/IGR2/T2)
 1xSH1.0 4pin connector GPS (T4/R4/G/SV)
 1xSH1.0 4pin connector LED&Beeper (BUZ/LED/G/SV)
 4x0402 LEDs for FC STATUS (3.3V Red) / (Start Blue) / (5V Green) / (BAT Orange)
 Smartaudio&RCTramp VTX protocol supported
 WS2812ledStrip: Yes
 Beeper: Yes
 Dimensions: 30.5*27mm
 Mounting hole: 20*20mm*4
 Weight: 4.8g

Firmware target:
 Betaflight: iFLIGHT_BLITZ_F7_4IO
 INAV: /
 Ardupilot: orduplane_with_bt



DJI Digital Transmitters: SUBS Protocol

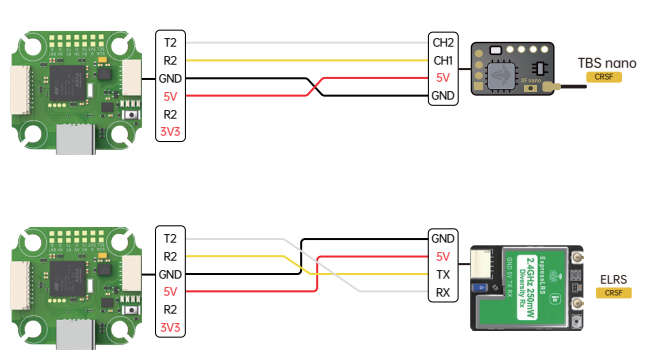
FC plug&play port and setup compatible to DJI Air Unit and Caddx Vista



Receiver	Configuration/OSD	Serial Rx	Telemetry Output	Sensor Input	Peripherals
USB VCP	115200	Disabled	AUTO	Disabled	AUTO
UART1	115200	Disabled	AUTO	Disabled	AUTO
UART2	115200	Disabled	AUTO	Disabled	AUTO
UART3	115200	Disabled	AUTO	Disabled	AUTO
UART4	115200	Disabled	AUTO	Disabled	AUTO
UART5	115200	Disabled	AUTO	Disabled	AUTO
UART6	115200	Disabled	AUTO	Disabled	AUTO

- To enable the air unit OSD under Betaflight 4.4 version, you need to select VTX (MSP+Displayport) in the peripheral port where the air unit signal is connected to the port interface.
- Please check your protocols, otherwise your DJI Radio won't input signals!
- DJI Goggle protocol and Betaflight protocol has to match! For lower signal latency use the SBus BAUD_FAST protocol option on both ends.
- For Betaflight Copy Paste "set sbus baud fast=on" into your Betaflight Configuration CLI then hit enter. Use "save" and hit enter to save the changes. Default: sbus baud fast=off, Goggle protocol set to NORMAL.

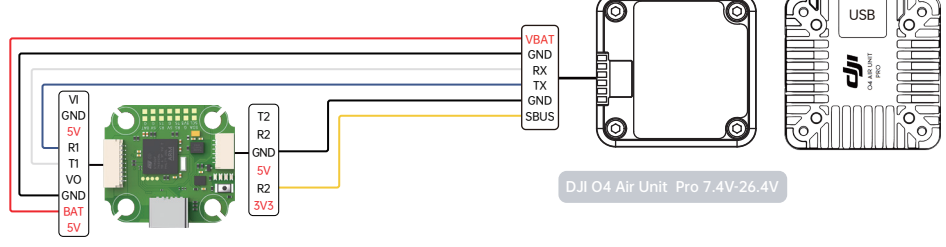
Others Receivers(TBS/ELRS): CRSF Protocol



Receiver	Configuration/OSD	Serial Rx	Telemetry Output	Sensor Input	Peripherals
USB VCP	115200	Disabled	AUTO	Disabled	AUTO
UART1	115200	Disabled	AUTO	Disabled	AUTO
UART2	115200	Disabled	AUTO	Disabled	AUTO
UART3	115200	Disabled	AUTO	Disabled	AUTO
UART4	115200	Disabled	AUTO	Disabled	AUTO
UART5	115200	Disabled	AUTO	Disabled	AUTO
UART6	115200	Disabled	AUTO	Disabled	AUTO

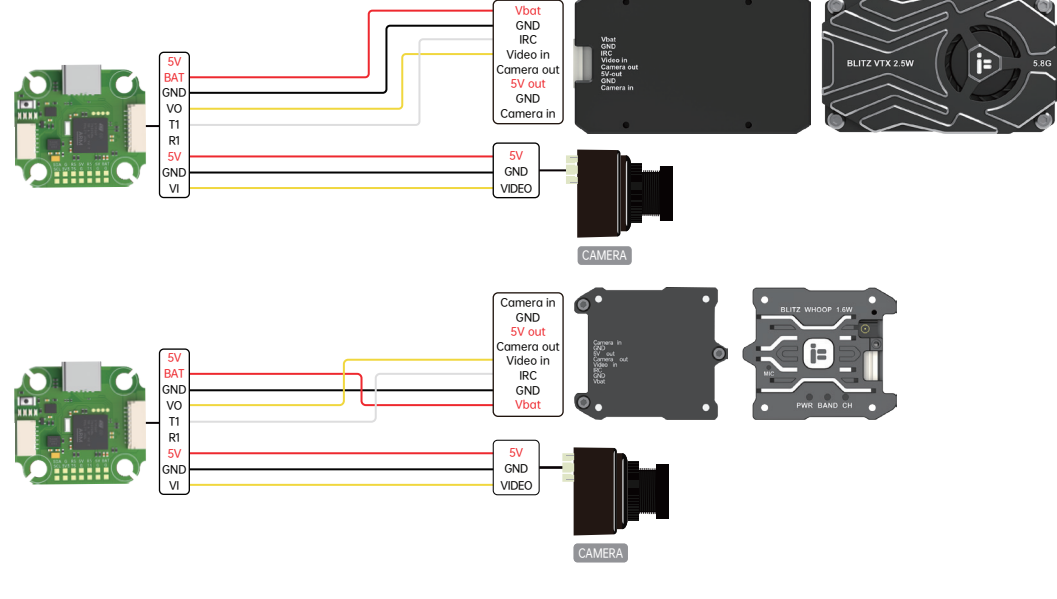
Receiver: Serial (via UART) Receiver Mode:
 - The UART for the receiver must be set to Serial Rx (in the Ports tab)
 - Select the correct data format from the drop-down below.
 CRSF Serial Receiver Protocol
 Telemetry:
 TELEMETRY Telemetry output

VTX/CAM

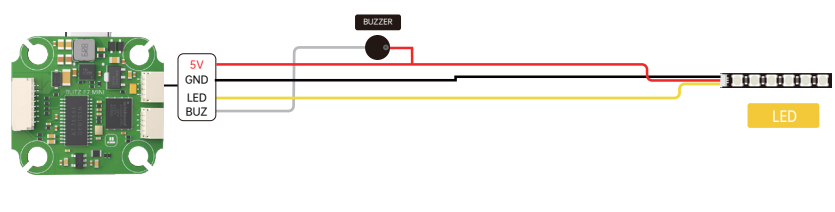


Receiver	Configuration/OSD	Serial Rx	Telemetry Output	Sensor Input	Peripherals
USB VCP	115200	Disabled	AUTO	Disabled	AUTO
UART1	115200	Disabled	AUTO	Disabled	AUTO
UART2	115200	Disabled	AUTO	Disabled	AUTO
UART3	115200	Disabled	AUTO	Disabled	AUTO
UART4	115200	Disabled	AUTO	Disabled	AUTO
UART5	115200	Disabled	AUTO	Disabled	AUTO
UART6	115200	Disabled	AUTO	Disabled	AUTO

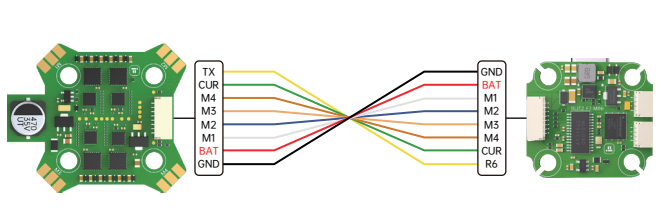
Receiver	Configuration/OSD	Serial Rx	Telemetry Output	Sensor Input	Peripherals
USB VCP	115200	Disabled	AUTO	Disabled	AUTO
UART1	115200	Disabled	AUTO	Disabled	AUTO
UART2	115200	Disabled	AUTO	Disabled	AUTO
UART3	115200	Disabled	AUTO	Disabled	AUTO
UART4	115200	Disabled	AUTO	Disabled	AUTO
UART5	115200	Disabled	AUTO	Disabled	AUTO
UART6	115200	Disabled	AUTO	Disabled	AUTO



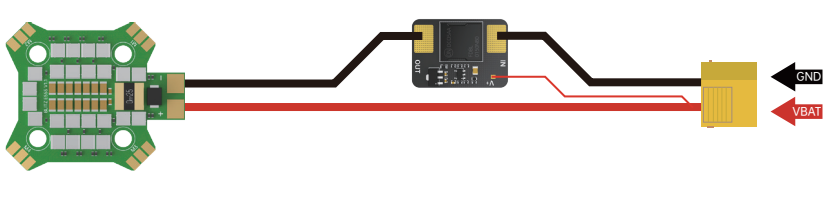
LED/BUZZER



ESC

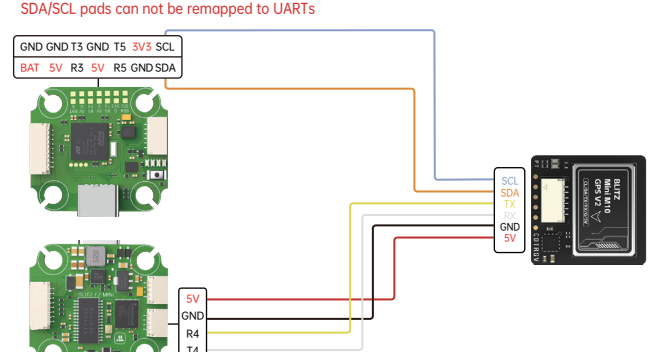


Anti-Spark filter



GPS

SDA/SCL pads can not be remapped to UARTs



Receiver	Configuration/OSD	Serial Rx	Telemetry Output	Sensor Input	Peripherals
USB VCP	115200	Disabled	AUTO	Disabled	AUTO
UART1	115200	Disabled	AUTO	Disabled	AUTO
UART2	115200	Disabled	AUTO	Disabled	AUTO
UART3	115200	Disabled	AUTO	Disabled	AUTO
UART4	115200	Disabled	AUTO	Disabled	AUTO
UART5	115200	Disabled	AUTO	Disabled	AUTO
UART6	115200	Disabled	AUTO	Disabled	AUTO

GPS Configuration
 UBLOX Protocol
 Auto Config
 Use Galileo
 Set Home Point Once
 Auto-detect Ground Assistance Type

Dimensions/Mounting pattern

