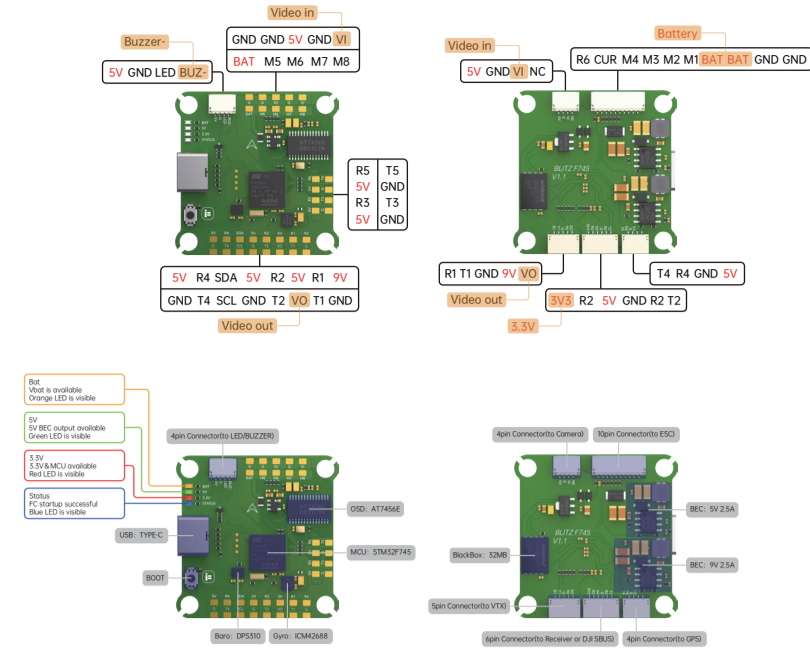


iFlight BLITZ F745 Instructions

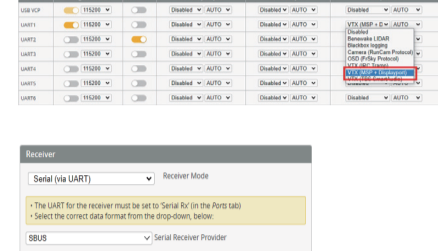
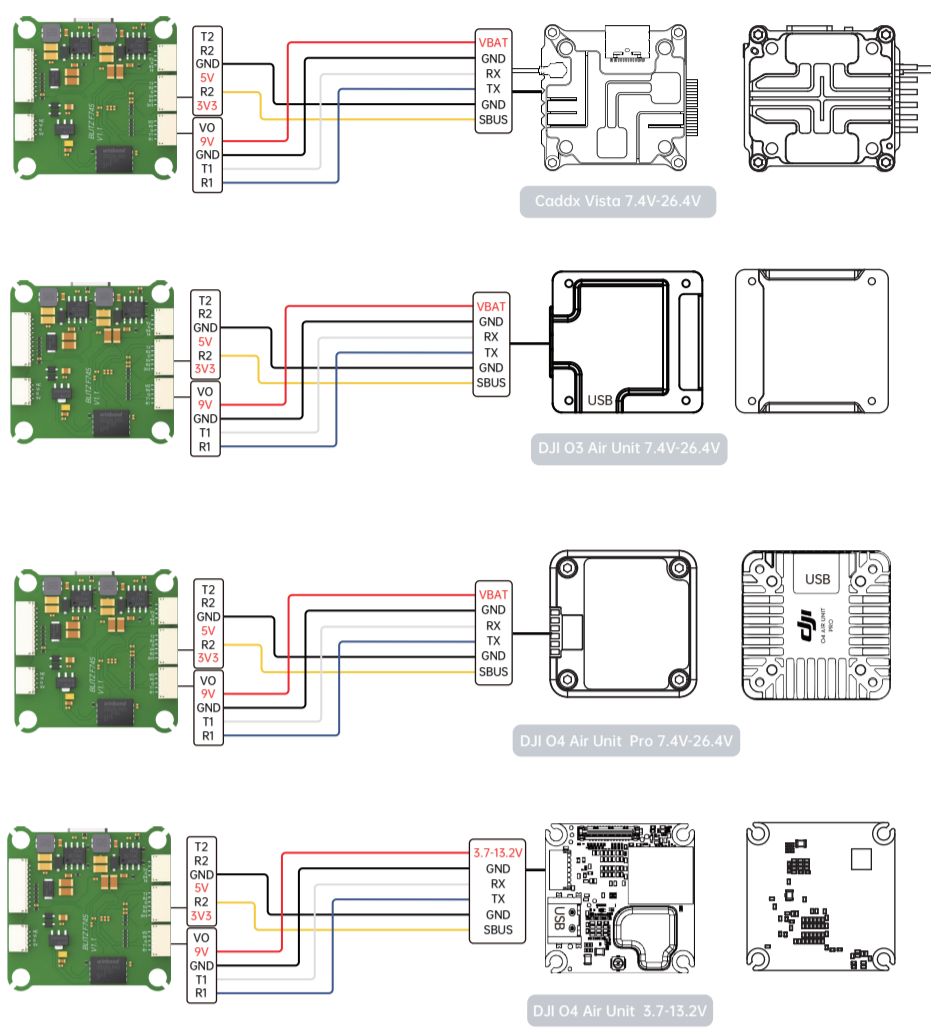
Parameters:

MCU: STM32F745
 Gyro: ICM42688
 Baro: DPS310
 OSD: AT7456E
 ①BEC: Output 5V 2.5A continuous output current, 5A peak current (15 seconds)
 ②BEC: Output 9V 2.5A continuous output current, 5A peak current (15 seconds)
 BlackBox: 32MB
 Uart: 6*UART(UART1, UART2, UART3, UART4, UART5, UART6)
 UART1 for VTX HD/Analog
 UART2 for Receiver
 UART3, UART4, UART5 for GPS or Other devices that require serial ports
 UART6 for ESC Telemetry
 8*Hot/PWM outputs
 1xI2C
 1xSH.0 5pin connector for HD VTX/Analog VTX&CAM (R1/T1/G/P/W/V0)
 1xSH.0 10pin connector for ESC (R6/CUR/M4/M3/M2/M1/BAT/BAT/G)
 1xSH.0 6pin connector for Any Receiver or DJI (SV3/R2/SV/GR2/T2)
 1xSH.0 4pin connector GPS (S4/R4/G/SV)
 1xSH.0 4pin connector Camera (SV/G/NC)
 1xSH.0 4pin connector LED&Beeper (BUZ/L/LED/GND/SV)
 4*0402 LEDs for FC STATUS (3.3V Red) / (Start Blue) / (5V Green) / (BAT Orange)
 SmartAudio&RCTramp VTX protocol supported
 WS2812&5Strip: Yes
 Beeper: Yes
 Dimensions: 36.5*35mm
 Mounting hole: 30.5*30.5mm/4
 Weight: 7.8g

Firmware target:
 Betaflight: iFLIGHT_BLITZ_F7_AIO
 INAV: /
 Ardupilot: arduplane_with_bl

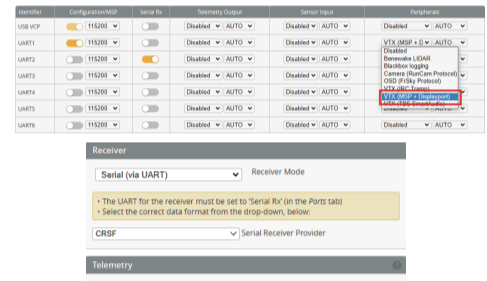
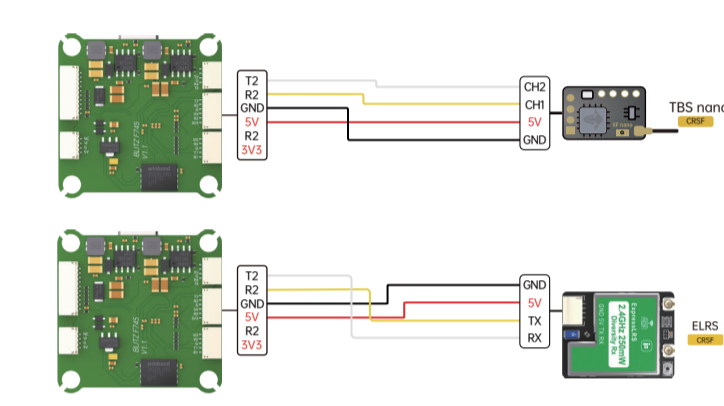


DJI Digital Transmitters: SUBS Protocol



- To enable the air unit OSD in Betaflight 4.4 version, you need to select VTX (MSP+Displayport) in the peripheral port where the air unit signal is connected to the port interface.
- Please check your protocols, otherwise your DJI Radio won't input signals!
- DJI Goggle protocol and Betaflight protocol has to match! For lower signal latency use the SBus BAUD_FAST protocol option on both ends.
- For Betaflight Copy Paste* set bus baud fast=on into your Betaflight Configurator CLI then hit enter. Use 'save' and hit enter to save the changes. Default: bus_baud_fast=off, Goggle protocol set to NORMAL

Others Receivers(TBS/ELRS): CRSF Protocol



VTX/CAM

