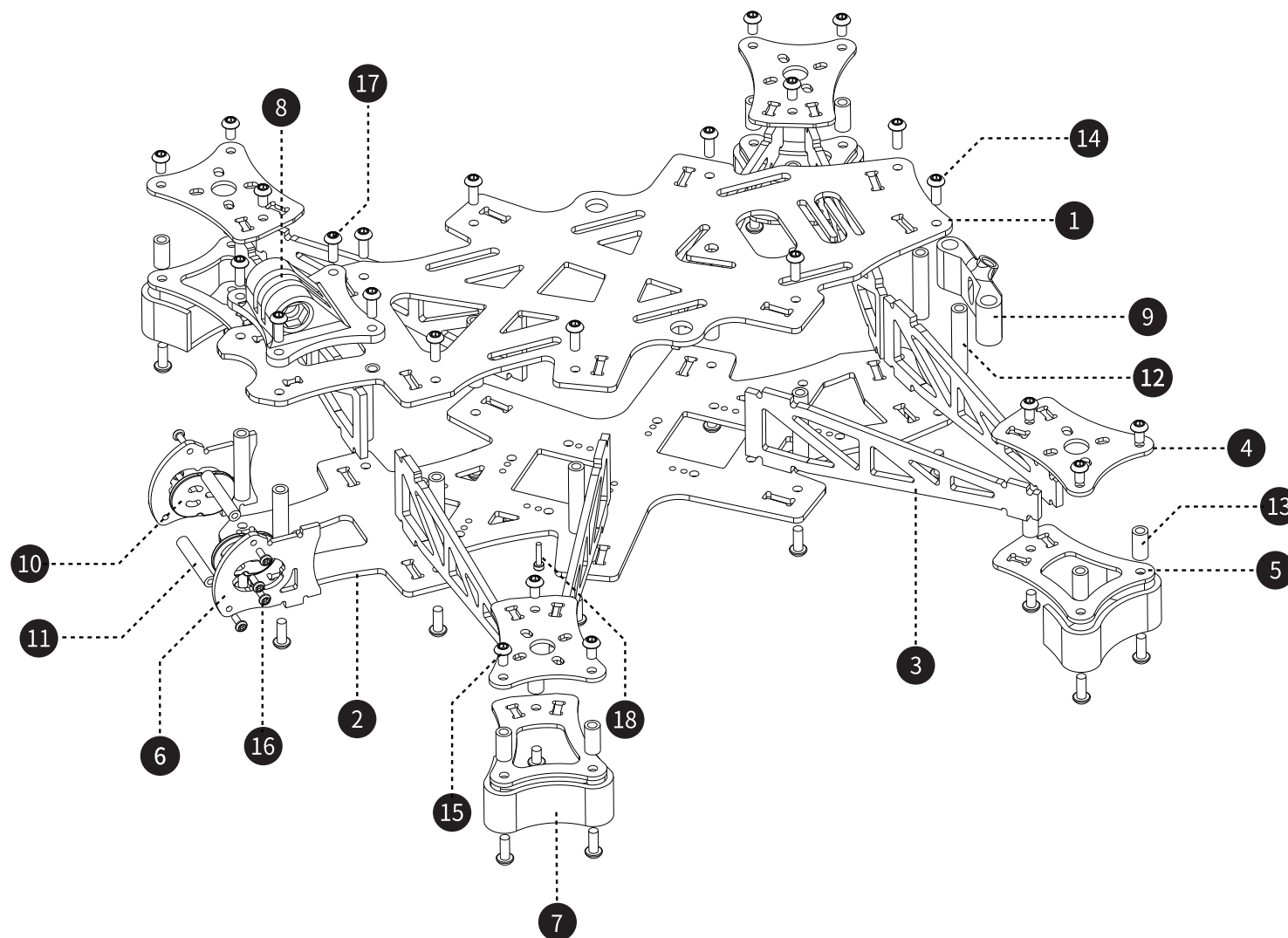


AOS UL7 EVO

机架组装示意图

Frame Assembly Guide

- | | |
|----------------------------|-----|
| 1. 顶板 | x1 |
| Top plate | |
| 2. 底板 | x1 |
| Bottom plate | |
| 3. 机臂 | x8 |
| Arm | |
| 4. 电机座 | x4 |
| Motor mount | |
| 5. 电机底座 | x4 |
| Motor bottom base | |
| 6. 摄像头侧板 | x1 |
| Camera side plate | |
| 7. 脚垫打印件 | x1 |
| Arm guard TPU | |
| 8. 可调节狗座底座打印件 | x1 |
| GoPro bottom stand TPU | |
| 9. 图传天线座打印件 | x1 |
| Antenna TPU | |
| 10. 摄像头硅胶侧板 | x1 |
| Silicone camera side plate | |
| 11. M2*23 圆形网纹铝柱 | x2 |
| M2*23 Al. standoff | |
| 12. M3*25 圆形网纹铝柱 | x10 |
| M3*25 Al. standoff | |
| 13. M3*10 圆形网纹铝柱 | x12 |
| M3*10 Al. standoff | |
| 14. M3*8 内六角螺丝 | x28 |
| M3*8 hex screw | |
| 15. M3*6 内六角螺丝 | x16 |
| M3*6 hex screw | |
| 16. M2*5 内六角螺丝 | x8 |
| M2*5 hex screw | |
| 17. M3*8 内六角带垫螺丝 | x4 |
| M3*8 hex washer head screw | |
| 18. M1.6*8 杯头内六角螺丝 | x4 |
| M1.6*8 socket head cap | |



(附赠)/(Additional parts)

- | | |
|------------------------------|----|
| 1. 光面硅胶防滑垫 | x2 |
| Silicone spacer for 19mm cam | |
| 2. 通用贴纸 | x1 |
| Sticker | |
| 3. 内六角扳手 | x1 |
| Allen wrench | |
| 4. M5法兰螺母 | x1 |
| M5 nut | |
| 5. M5*20 内六角螺丝 | x1 |
| M5*20 hex screw | |