

X413

机架组装示意图

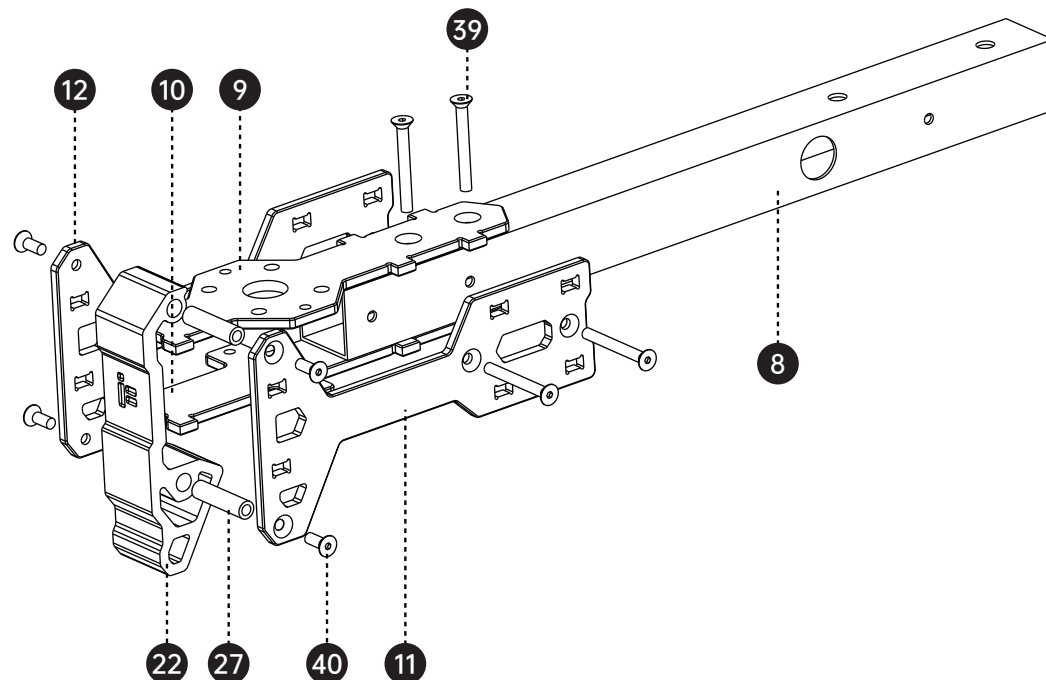
Frame Assembly Guide

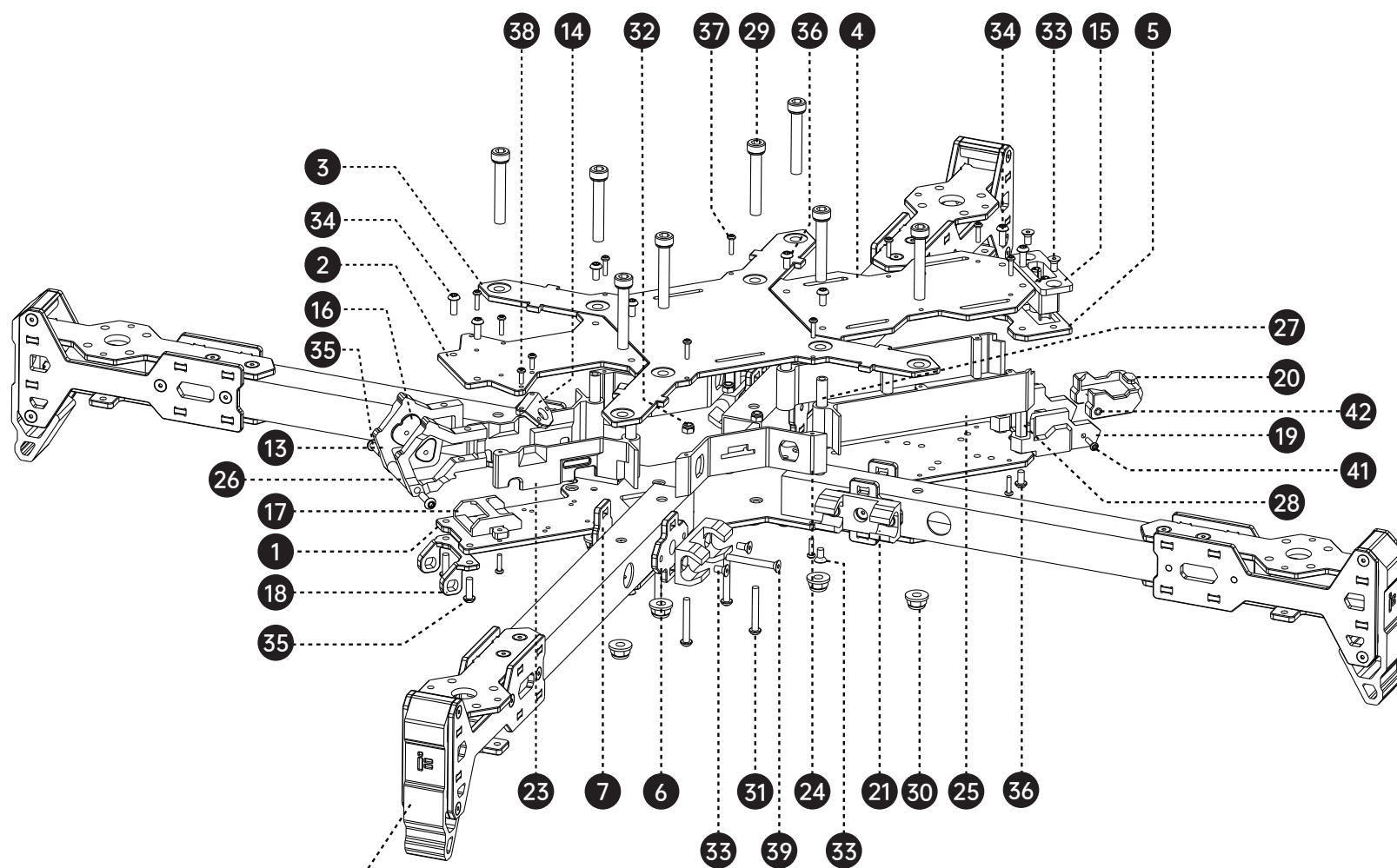
- | | | | |
|---|----|---|-----|
| 1. 底板
Bottom plate | x1 | 24. 中侧板 PLA
Medial side panels PLA | x2 |
| 2. 顶板A
Top plate A | x1 | 25. 后侧板 PLA
Rear side panels PLA | x2 |
| 3. 顶板B
Top plate B | x1 | 26. M3*23圆形网纹铝柱
M3*23 Al. standoff | x2 |
| 4. 顶板C
Top plate C | x1 | 27. M3*20圆形网纹铝柱
M3*20 Al. standoff | x14 |
| 5. XT90 固定板
XT90 mount | x1 | 28. M3*18六角形铝柱
M3*18 hex Al. standoff | x3 |
| 6. 机臂夹板A
Arm counter plate A | x4 | 29. M5*32内六角螺丝
M5*32 hex screw | x10 |
| 7. 机臂夹板B
Arm counter plate B | x4 | 30. M5防松螺母
M5 lock nut | x10 |
| 8. 机臂
Arm | x4 | 31. M3*22内六角螺丝
M3*22 hex screw | x5 |
| 9. 电机座A
Motor mount A | x4 | 32. M3防松自紧螺母
M3 lock nut | x8 |
| 10. 电机座B
Motor mount B | x4 | 33. M3*6沉头内六角螺丝
M3*6 countersunk hex screw | x16 |
| 11. 脚架A
Landing gear A | x4 | 34. M3*8内六角螺丝
M3*8 hex screw | x6 |
| 12. 脚架B
Landing gear B | x4 | 35. M3*10内六角螺丝
M3*10 hex screw | x8 |
| 13. 摄像头侧板CNC
CNC Camera side plate | x2 | 36. M3*6内六角螺丝
M3*6 hex screw | x10 |
| 14. 图传天线固定座CNC
CNC Antenna | x2 | 37. M2*8内六角自攻螺丝
M2*8 self-tapping hex | x22 |
| 15. 电源线+XT90E-M 插头
XT90E-M power cable | x1 | 38. M2*6内六角螺丝
M2*6 hex screw | x6 |
| 16. 单孔摄像头硅胶侧板
FPV cam vibration dampers silicone single hole | x2 | 39. M3*26沉头内六角螺丝
M3*26 countersunk hex screw | x38 |
| 17. 接收机座 TPU
Receiver TPU | x1 | 40. M3*8沉头内六角螺丝
M3*8 countersunk hex screw | x18 |
| 18. T型天线座 TPU
T-Type Antenna TPU | x1 | 41. M2*8内六角带垫螺丝
M2*8 wash head hex screw | x3 |
| 19. GPS支架 TPU
GPS bracket TPU | x2 | 42. M2*25圆形网纹铝柱
M2*25 Al. standoff | x2 |
| 20. GPS座 TPU
GPS mount TPU | x1 | | |
| 21. 电机线固定座 TPU
Motor wires holder TPU | x4 | | |
| 22. 脚架 TPU
Arm guard TPU | x4 | | |
| 23. 前侧板 PLA
Front side panels PLA | x2 | | |

附赠 Additional parts

- | | | | | | |
|--|----|--|----|--|----|
| 1. 格纹硅胶电池防滑垫A
Battery pad A | x1 | 6. 5*3.2*3 双通尼龙柱
5*3.2*3 Double-pass Al. standoff | x2 | 11. 3.1*5*20双通尼龙柱
3.1*5*20 Double-pass Al. standoff | x8 |
| 2. 格纹硅胶电池防滑垫B
Battery pad B | x2 | 7. MT60 插头(一对)
MT60 Connectors | x4 | 12. M3*12沉头内六角螺丝
M3*12 countersunk hex screw | x2 |
| 3. 格纹硅胶电池防滑垫C
Battery pad C | x1 | 8. 通用贴纸V4
Sticker V4 | x1 | 13. 集线管
Motor wire protecto | x4 |
| 4. 20*410超纤皮电池扎带
20*410 Battery strap | x3 | 9. M1.6*6内六角螺丝
M1.6*6 hex screw | x5 | | |
| 5. M2*5内六角螺丝
M2*5 hex screw | x8 | 10. M1.6*10内六角螺丝
M1.6*10 hex screw | x5 | | |

机臂部分 Arm





机臂部分
Arm